



MLS 6736041 Lake Home

\$425,000

1,680 sq ft
2 bedrooms
3 baths

11468 Robinwood Lane
Brainerd MN 56401

Waterfront: Miller Lake (Garrison
Twp.)

Status: Pending

Description:

Charming Lakeside Retreat on Miller Lake – Ideal for Nature Lovers & Anglers!
Welcome to your perfect getaway or year-round home on the peaceful shores of Miller Lake, renowned for its excellent fishing and tranquil surroundings. This inviting property features 2+ bedrooms, offering flexible space for guests, a home office, or hobby room. Step into the warm and welcoming living room, where a classic brick fireplace creates the ideal setting for cozy evenings with friends and family. The lakeside sunroom is a standout feature—imagine enjoying your morning coffee or evening glass of wine while overlooking serene lake views and listening to the sounds of nature. There is lots of storage with the 2 stall detached garage and extra 18x8 shed. The property has been cared for meticulously and includes several fruiting apple trees, low maintenance gardens, native shrub plantings and a small woodland. Whether you're casting a line from your private shoreline, enjoying the sunrise from the porch, or hosting a summer barbecue, this property offers the best of lakeside living. Don't miss your chance to own a piece of paradise on Miller Lake.

Additional Details:

Year Built	1991
Lot Acres	0.63
Lot Dimensions	100x301x90x310
Garage Stalls	2
School District	181
Taxes	\$2,446
Taxes with Assessments	\$2,446
Tax Year	2024

Additional Features:

Basement: Block, Daylight/Lookout Windows, Partially Finished **Fuel:** Propane **Garage:** 2 **Heat:** Forced Air, Fireplace(s) **Sewer:** Mound Septic, Private Sewer **Water:** Drilled, Private, Well **Air Conditioning:** Central Air

Driving Directions:

From Garrison, go north on MN 18, 1.4 miles to left on County 10, 1.9 miles to left on Mail Rout Rd, 1.1 miles to left on Robinwood to home on left..



Listed By:
Century 21 Brainerd Realty

Affinity Real Estate Inc. participates in the Regional Multiple Listing Service of Minnesota, Inc Broker Reciprocity (sm) program, allowing us to display other broker's listings on our website. All properties are subject to prior sale, change or withdrawal.



Call Affinity Real Estate

218-237-3333

info@affinityrealestate.com



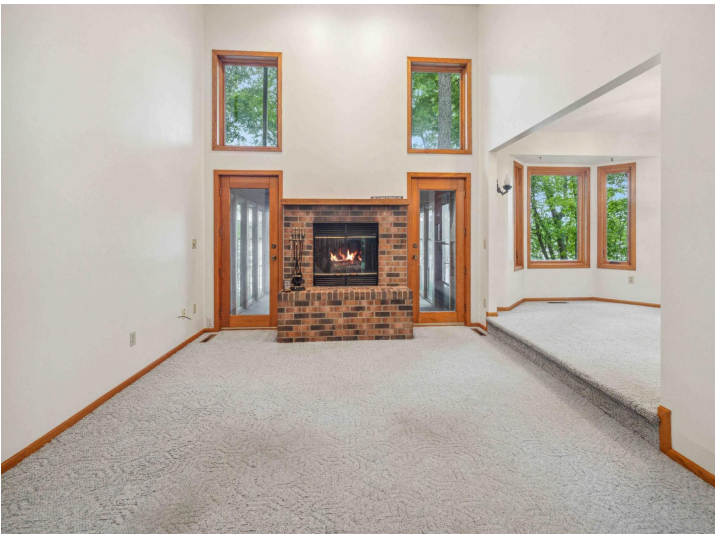
Affinity Real Estate - 600 Park Avenue South - Park Rapids MN 56470



website: www.AffinityRealEstate.com | email: info@affinityrealestate.com | office: 218-237-3333 | fax: 218-237-3377

Affinity
REAL ESTATE INC

\$425,000
MLS 6736041 Lake Home
11468 Robinwood Lane
Brainerd MN 56401



website: www.AffinityRealEstate.com | email: info@affinityrealestate.com | office: 218-237-3333 | fax: 218-237-3377

Affinity
REAL ESTATE INC

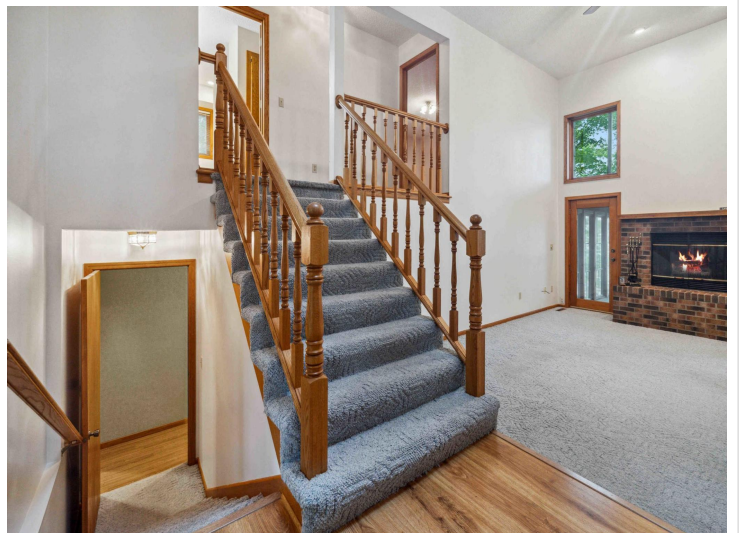
\$425,000
MLS 6736041 Lake Home
11468 Robinwood Lane
Brainerd MN 56401



website: www.AffinityRealEstate.com | email: info@affinityrealestate.com | office: 218-237-3333 | fax: 218-237-3377



\$425,000
MLS 6736041 Lake Home
11468 Robinwood Lane
Brainerd MN 56401

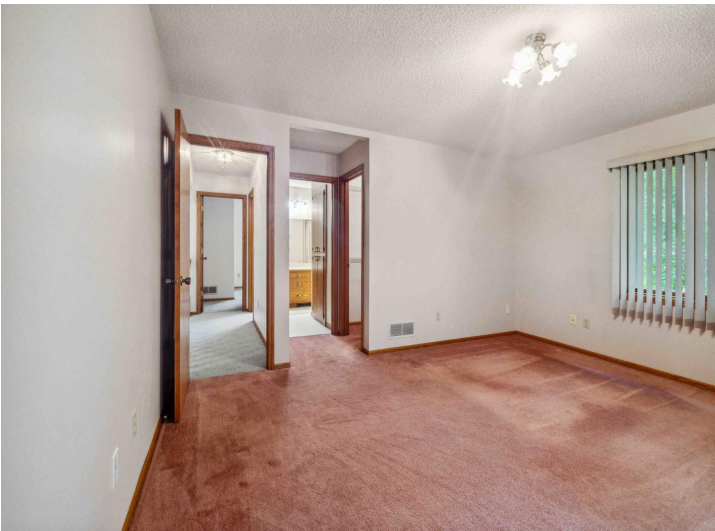


website: www.AffinityRealEstate.com | email: info@affinityrealestate.com | office: 218-237-3333 | fax: 218-237-3377

Affinity
REAL ESTATE INC

\$425,000

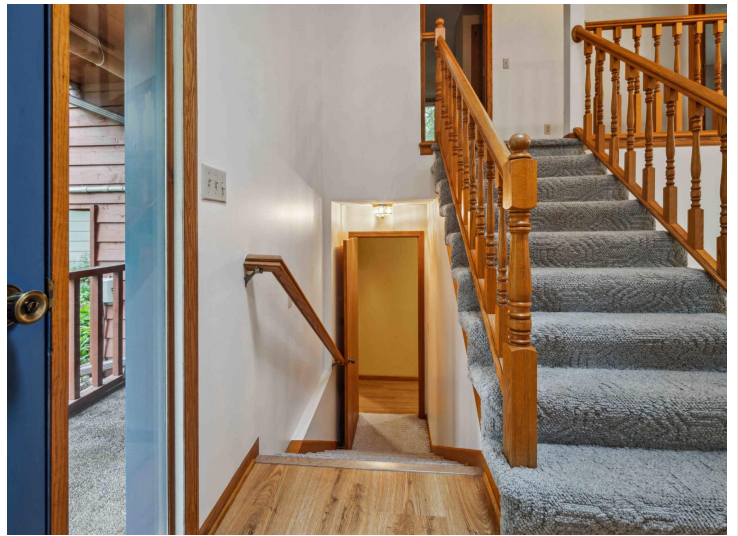
MLS 6736041 Lake Home
11468 Robinwood Lane
Brainerd MN 56401



website: www.AffinityRealEstate.com | email: info@affinityrealestate.com | office: 218-237-3333 | fax: 218-237-3377

Affinity
REAL ESTATE INC

\$425,000
MLS 6736041 Lake Home
11468 Robinwood Lane
Brainerd MN 56401



website: www.AffinityRealEstate.com | email: info@affinityrealestate.com | office: 218-237-3333 | fax: 218-237-3377



\$425,000
 MLS 6736041 Lake Home
 11468 Robinwood Lane
 Brainerd MN 56401



website: www.AffinityRealEstate.com | email: info@affinityrealestate.com | office: 218-237-3333 | fax: 218-237-3377



\$425,000
MLS 6736041 Lake Home
11468 Robinwood Lane
Brainerd MN 56401