



MLS 6736047 Lake Land

**\$250,000**

**Description:**

Fantastic opportunity to build your dream home/cabin on Borden Lake. With 300ft of lakeshore and an ideal lot to take in beautiful south facing water views, this heavily wooded lot provides multiple areas to build and ensures privacy on its three acres. Borden Lake offers 1000 acres of fishing, swimming, boating, dining and fun! (See supplements for survey, Tract B is the available lot).

**Additional Details:**

|                        |                           |
|------------------------|---------------------------|
| Lot Acres              | 2.48                      |
| Lot Dimensions         | see survey in supplements |
| School District        | 181                       |
| Taxes                  | \$116                     |
| Taxes with Assessments | \$116                     |
| Tax Year               | 2024                      |

**Additional Features:**

**Driving Directions:**

Highway 18, West on Hwy 10, Left on Emstad Road, Left on Bollenbacker Road, Lot is marked with pink ribbons (just past Raspberry Lane) on Bollenbacher Road.



Listed By:  
Keller Williams Realty Integrity Lakes

Affinity Real Estate Inc. participates in the Regional Multiple Listing Service of Minnesota, Inc Broker Reciprocity (sm) program, allowing us to display other broker's listings on our website. All properties are subject to prior sale, change or withdrawal.



**Call Affinity Real Estate**

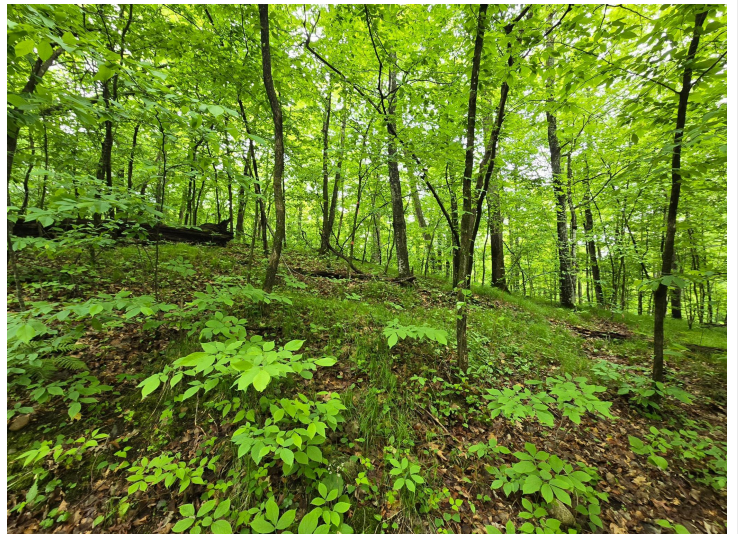
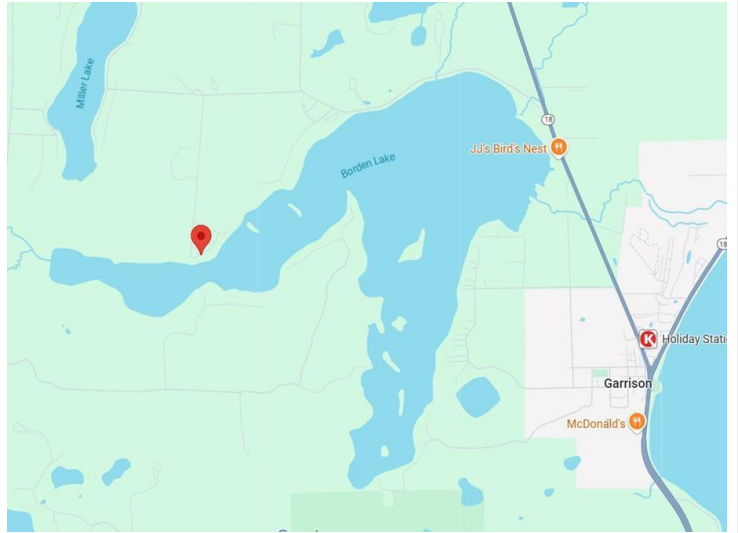
**218-237-3333**

**[info@affinityrealestate.com](mailto:info@affinityrealestate.com)**



**Affinity Real Estate - 600 Park Avenue South - Park Rapids MN 56470**





website: [www.AffinityRealEstate.com](http://www.AffinityRealEstate.com) | email: [info@affinityrealestate.com](mailto:info@affinityrealestate.com) | office: 218-237-3333 | fax: 218-237-3377



**\$250,000**  
 MLS 6736047 Lake Land  
 TBD Bollenbacher Road  
 Brainerd MN 56401





website: [www.AffinityRealEstate.com](http://www.AffinityRealEstate.com) | email: [info@affinityrealestate.com](mailto:info@affinityrealestate.com) | office: 218-237-3333 | fax: 218-237-3377



**\$250,000**

MLS 6736047 Lake Land  
TBD Bollenbacher Road  
Brainerd MN 56401