

MLS 6736145 Lake Land

\$250,000

Description:

Incredible opportunity to own this 1.66± acre wooded lot with approximately 100 feet of shoreline on prestigious Leech Lake. Nestled along Oak Point Road NW, this peaceful property features mature trees, scenic views, and direct access to the lake—ideal for a seasonal escape, future cabin, or investment. A septic system and well are already in place. Experience the perfect blend of natural beauty and potential on one of Minnesota's premier fishing and recreation lakes. Don't miss your chance to build your dream retreat on Leech Lake!

Additional Details:

Lot Acres	1.66
Lot Dimensions	101x770x775x103
School District	115
Taxes	\$2,002
Taxes with Assessments	\$2,068
Tax Year	2025

Additional Features:

Driving Directions:

North from Walker on Hwy 371 approx. 11 miles to Oak Pt Rd. Turn Right for approx. 11 miles to Oak Point Road



Listed By:
Realty Executives Top Results

Affinity Real Estate Inc. participates in the Regional Multiple Listing Service of Minnesota, Inc Broker Reciprocity (sm) program, allowing us to display other broker's listings on our website. All properties are subject to prior sale, change or withdrawal.



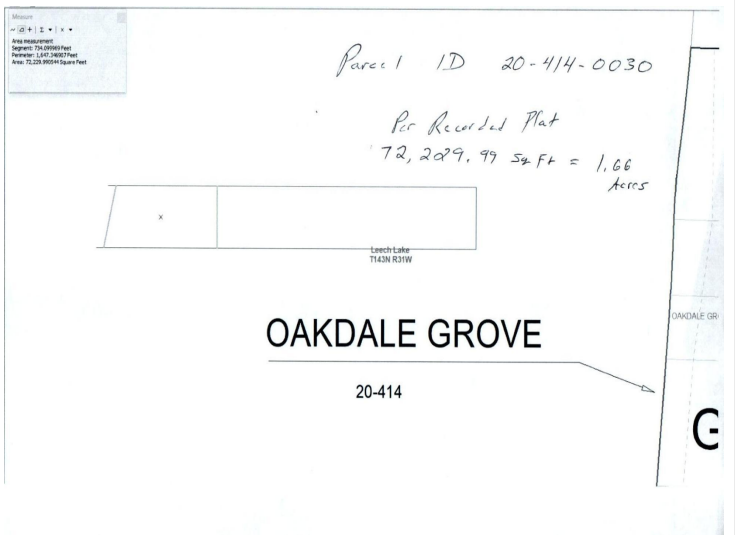
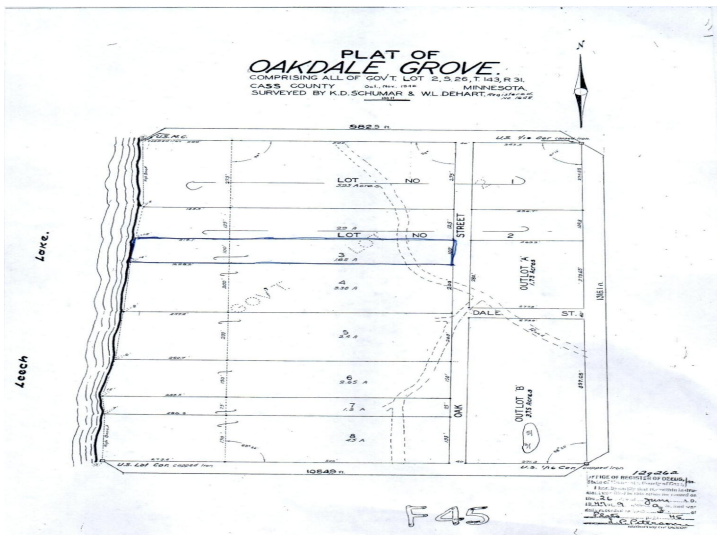
Call Affinity Real Estate

218-237-3333

info@affinityrealestate.com



Affinity Real Estate - 600 Park Avenue South - Park Rapids MN 56470



website: www.AffinityRealEstate.com | email: info@affinityrealestate.com | office: 218-237-3333 | fax: 218-237-3377



\$250,000
 MLS 6736145 Lake Land
 10551 Oak Point Road
 Cass Lake MN 56633