

MLS 6736302 Land

**\$79,900**

37.92 Acres  
Raw Land

TBD\* County Road 139  
Verndale MN 56481

Status: Pending

**Description:**

37.92 ACRES OF HIGHGROUND WITH SOME LIGHTLY WOODED AREAS.

**Additional Details:**

Lot Acres	37.92
Lot Dimensions	1291x1319
School District	820
Taxes	\$1
Taxes with Assessments	\$1
Tax Year	2025

**Additional Features:**

**Driving Directions:**

FROM PINE RIVER GO WEST ON COUNTY RD 2 FOR 14 MILES, LEFT (S) ON HWY 64 FOR 4 MILES, TURN RIGHT (W) ON 40TH STREET SW (CO. RD 12) FOR 4 MILES, THEN TURN (S) ON 275TH STREET (CO. RD 140) FOR 2 MILES THEN RIGHT ON 139 TO PROPERTY ON LEFT.



Listed By:  
Heartland Real Estate

Affinity Real Estate Inc. participates in the Regional Multiple Listing Service of Minnesota, Inc Broker Reciprocity (sm) program, allowing us to display other broker's listings on our website. All properties are subject to prior sale, change or withdrawal.



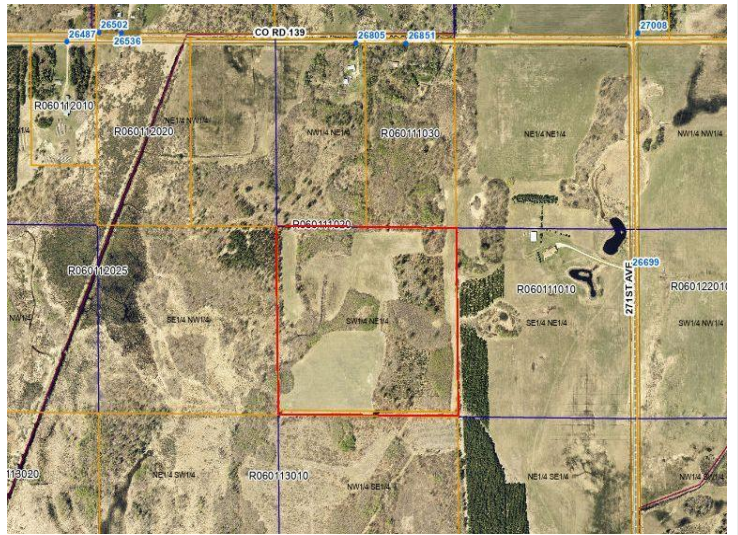
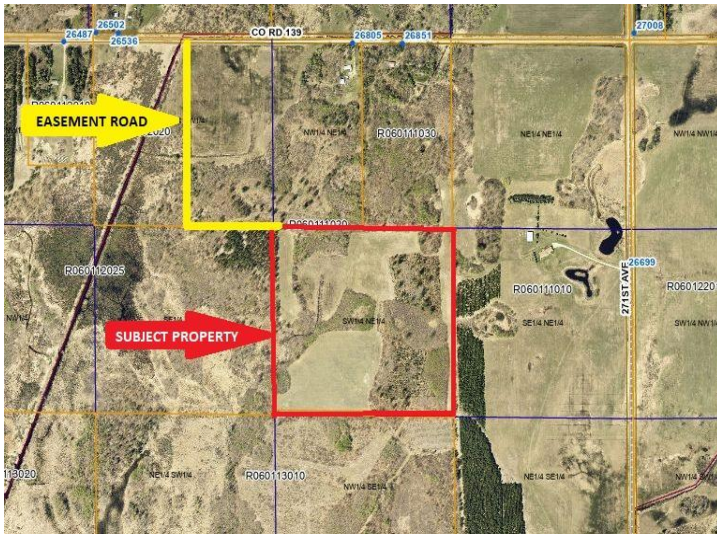
Call Affinity Real Estate

**218-237-3333**

[info@affinityrealestate.com](mailto:info@affinityrealestate.com)



Affinity Real Estate - 600 Park Avenue South - Park Rapids MN 56470



website: [www.AffinityRealEstate.com](http://www.AffinityRealEstate.com) | email: [info@affinityrealestate.com](mailto:info@affinityrealestate.com) | office: 218-237-3333 | fax: 218-237-3377



**\$79,900**  
 MLS 6736302 Land  
 TBD\* County Road 139  
 Verndale MN 56481