



MLS 6736889 Land

\$14,900

0.96 Acres

Raw Land

TBD 210th Street
Shevlin MN 56676

Status: Pending

Description:

Own a .96-acre parcel of property in the historical early 1900s town of Mallard! Located between Shevlin and Itasca Park. This property is very close to thousands of acres of public land, featuring hundreds of miles of trails and numerous lakes. Would be a great spot to build a home or have a seasonal retreat for a camper or build a cabin for hunting in the great Northwoods! Very close to the headwaters of the Mississippi River, White Earth State Forest a/k/a "The Buckboard Hills" and Headwaters State Forest.

Additional Details:

Lot Acres	0.96
Lot Dimensions	140x300
School District	162
Taxes	\$6
Taxes with Assessments	\$6
Tax Year	2025

Additional Features:

Driving Directions:

15 miles south of Bagley, east on 210th (#37) for 6 1/2 miles to property on the right.



Listed By:
Realty Experts, LLC

Affinity Real Estate Inc. participates in the Regional Multiple Listing Service of Minnesota, Inc Broker Reciprocity (sm) program, allowing us to display other broker's listings on our website. All properties are subject to prior sale, change or withdrawal.



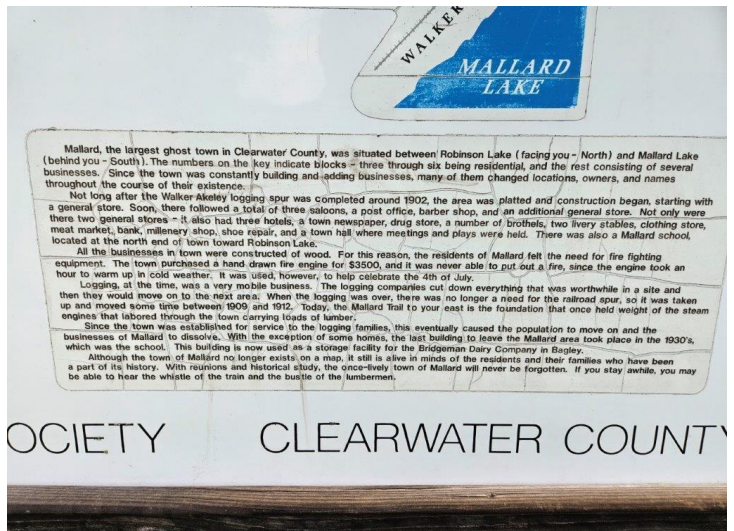
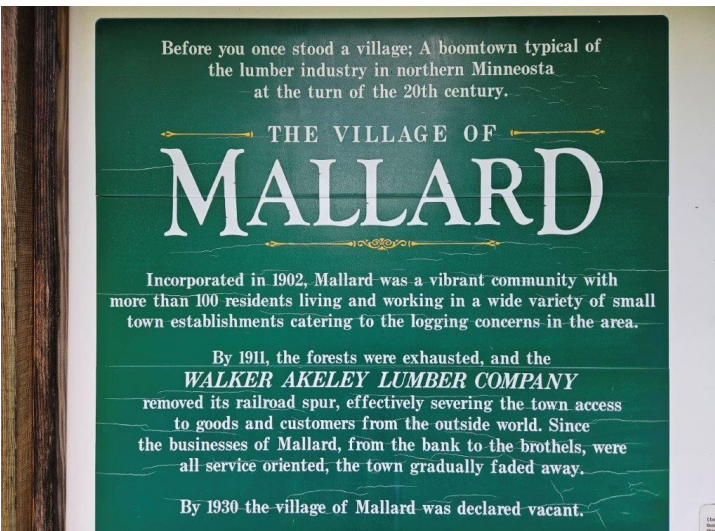
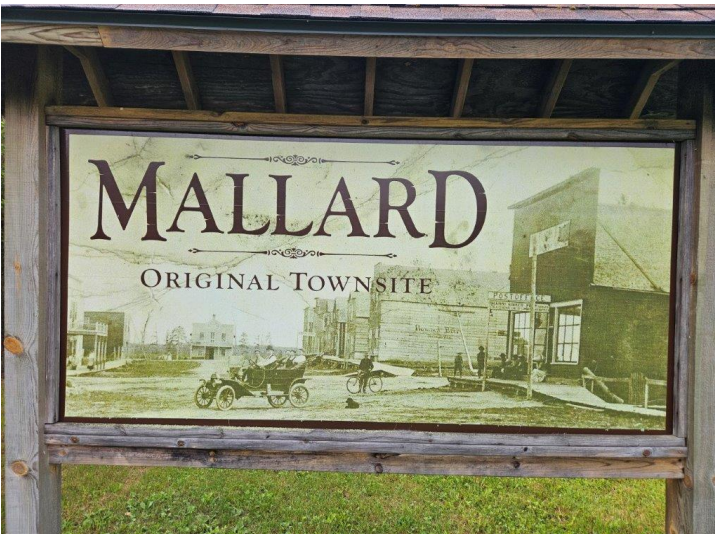
Call Affinity Real Estate

218-237-3333

info@affinityrealestate.com



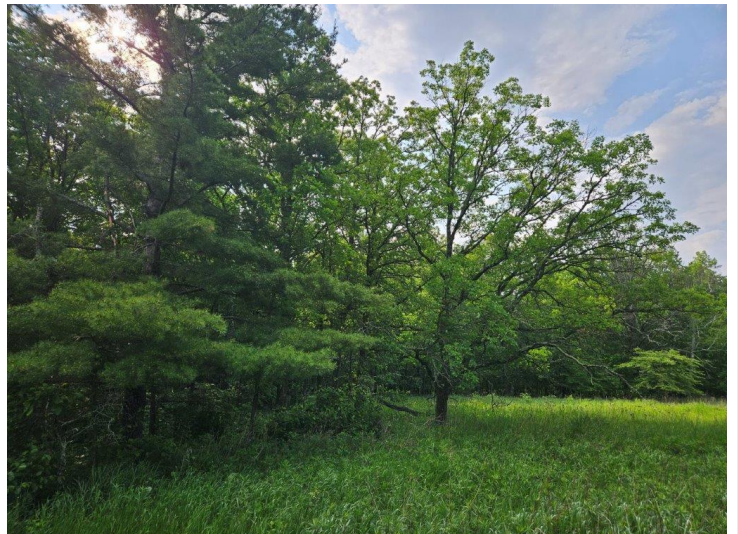
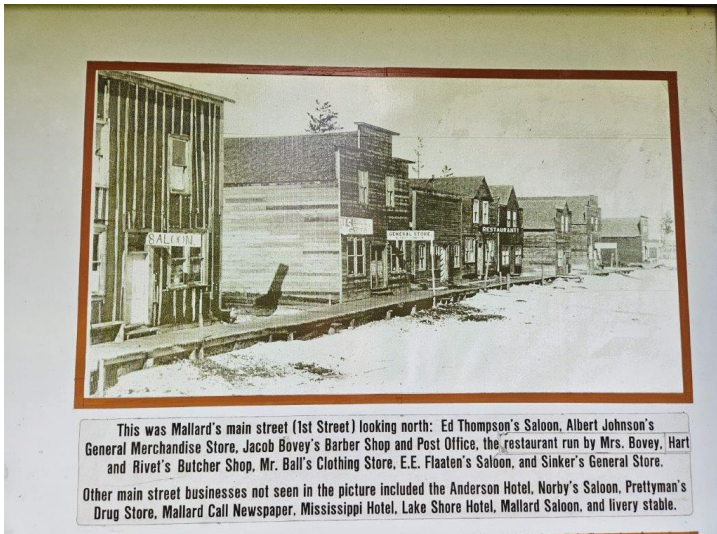
Affinity Real Estate - 600 Park Avenue South - Park Rapids MN 56470



website: www.AffinityRealEstate.com | email: info@affinityrealestate.com | office: 218-237-3333 | fax: 218-237-3377

Affinity
REAL ESTATE INC

\$14,900
MLS 6736889 Land
TBD 210th Street
Shevlin MN 56676



website: www.AffinityRealEstate.com | email: info@affinityrealestate.com | office: 218-237-3333 | fax: 218-237-3377



\$14,900
MLS 6736889 Land
TBD 210th Street
Shevlin MN 56676



website: www.AffinityRealEstate.com | email: info@affinityrealestate.com | office: 218-237-3333 | fax: 218-237-3377



\$14,900
 MLS 6736889 Land
 TBD 210th Street
 Shevlin MN 56676