



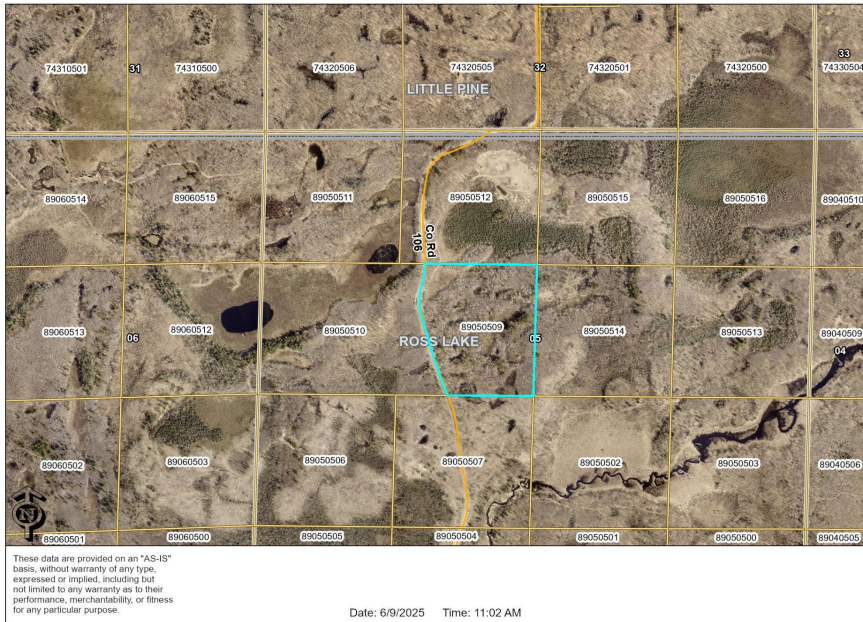
MLS 6737448 Land

**\$129,900**

30.5 Acres  
Raw Land

TBD County Road 106  
Aitkin MN 56431

Status: Active



#### Description:

A True Hunter's Dream! This 30-acre parcel is surrounded by over 6,000 acres of tax-forfeited land, giving you direct access to vast hunting ground and unmatched privacy. With snowmobile trails just to the south and nearby access to the Emily-Blind Lake ATV system, it's easy to get in and out—no matter the season. Well-used logging trails from recent storm cleanup make ideal routes for accessing stand locations or developing food plots. The property is enrolled in the Sustainable Forest Incentive Act, with 48 years remaining on the 50 year covenant—providing long-term benefits for the serious outdoorsman. 3 Acres have been retained for future cabin on property.

#### Additional Details:

Lot Acres	30.5
Lot Dimensions	1320x1050x1320x840
School District	8001
Taxes	\$280
Taxes with Assessments	\$280
Tax Year	2024

#### Additional Features:

#### Driving Directions:

North on Highway 6 to County Road 36 go right to property on Right.



Listed By:  
Coldwell Banker Crown Realtors

Affinity Real Estate Inc. participates in the Regional Multiple Listing Service of Minnesota, Inc Broker Reciprocity (sm) program, allowing us to display other broker's listings on our website. All properties are subject to prior sale, change or withdrawal.



Call Affinity Real Estate

**218-237-3333**

[info@affinityrealestate.com](mailto:info@affinityrealestate.com)



Affinity Real Estate - 600 Park Avenue South - Park Rapids MN 56470



website: [www.AffinityRealEstate.com](http://www.AffinityRealEstate.com) | email: [info@affinityrealestate.com](mailto:info@affinityrealestate.com) | office: 218-237-3333 | fax: 218-237-3377



**\$129,900**  
 MLS 6737448 Land  
 TBD County Road 106  
 Aitkin MN 56431



website: [www.AffinityRealEstate.com](http://www.AffinityRealEstate.com) | email: [info@affinityrealestate.com](mailto:info@affinityrealestate.com) | office: 218-237-3333 | fax: 218-237-3377



**\$129,900**  
MLS 6737448 Land  
TBD County Road 106  
Aitkin MN 56431



website: [www.AffinityRealEstate.com](http://www.AffinityRealEstate.com) | email: [info@affinityrealestate.com](mailto:info@affinityrealestate.com) | office: 218-237-3333 | fax: 218-237-3377



**\$129,900**  
 MLS 6737448 Land  
 TBD County Road 106  
 Aitkin MN 56431