



MLS 6737499 Residential

\$165,000

1,024 sq ft
3 bedrooms
1 baths

724 10th Street
Bemidji MN 56601

Status: Pending

Description:

Charming vintage feel - 3 Bd home with sturdy early-20th-century construction that is located a large corner lot. With a thoughtful blend of historic character and modern updates, this move-in-ready property offers comfort, functionality, and convenience in a well established neighborhood. Whether you're looking for your first home, a place to settle in, or an investment property with rental potential, this home offers flexibility to meet your needs.

Key Features

- *Bright, spacious rooms: Large windows invite natural light throughout the main living areas.
- Comfortable bedrooms: Three generously sized bedrooms offer flexibility—for a home office, guest space, or family use.
- *Kitchen & dining: The kitchen provides ample space for meal prep and informal dining.
- Spacious mudroom: A large entryway offers practical storage for coats, boots, and gear—ideal for all seasons.
- *Garage: 32x26 garage adds weather-protected parking and extra storage.
- *Outdoor space: The sizable lot (about 0.29 acres) gives plenty of room for gardening, play, and outdoor relaxation.

Additional Details:

Year Built	1910
Lot Acres	0.29
Lot Dimensions	90x140
Garage Stalls	2
School District	31
Taxes	\$1,798
Taxes with Assessments	\$1,652
Tax Year	2025

Additional Features:

Basement: Partial, Concrete, Unfinished **Fuel:** Natural Gas **Garage:** 2 **Heat:** Boiler, Ductless Mini-Split **Sewer:** City Sewer/Connected **Water:** City Water/Connected **Air Conditioning:** Ductless Mini-Split

Driving Directions:

West of Irvine Ave on the corner of 10th St and Maurice Ave



Listed By:
Real Broker, LLC

Affinity Real Estate Inc. participates in the Regional Multiple Listing Service of Minnesota, Inc Broker Reciprocity (sm) program, allowing us to display other broker's listings on our website. All properties are subject to prior sale, change or withdrawal.



Call Affinity Real Estate

218-237-3333

info@affinityrealestate.com



Affinity Real Estate - 600 Park Avenue South - Park Rapids MN 56470



website: www.AffinityRealEstate.com | email: info@affinityrealestate.com | office: 218-237-3333 | fax: 218-237-3377

Affinity
REAL ESTATE INC

\$165,000
MLS 6737499 Residential
724 10th Street
Bemidji MN 56601



website: www.AffinityRealEstate.com | email: info@affinityrealestate.com | office: 218-237-3333 | fax: 218-237-3377

Affinity
REAL ESTATE INC

\$165,000
MLS 6737499 Residential
724 10th Street
Bemidji MN 56601



website: www.AffinityRealEstate.com | email: info@affinityrealestate.com | office: 218-237-3333 | fax: 218-237-3377

Affinity
REAL ESTATE INC

\$165,000
MLS 6737499 Residential
724 10th Street
Bemidji MN 56601



website: www.AffinityRealEstate.com | email: info@affinityrealestate.com | office: 218-237-3333 | fax: 218-237-3377

Affinity
REAL ESTATE INC

\$165,000
MLS 6737499 Residential
724 10th Street
Bemidji MN 56601



website: www.AffinityRealEstate.com | email: info@affinityrealestate.com | office: 218-237-3333 | fax: 218-237-3377

Affinity
REAL ESTATE INC

\$165,000
MLS 6737499 Residential
724 10th Street
Bemidji MN 56601



website: www.AffinityRealEstate.com | email: info@affinityrealestate.com | office: 218-237-3333 | fax: 218-237-3377

Affinity
REAL ESTATE INC

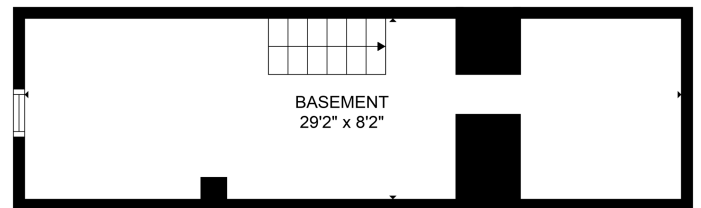
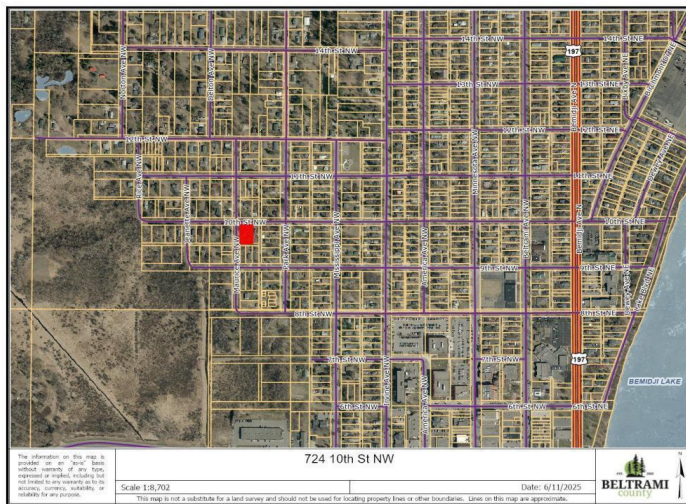
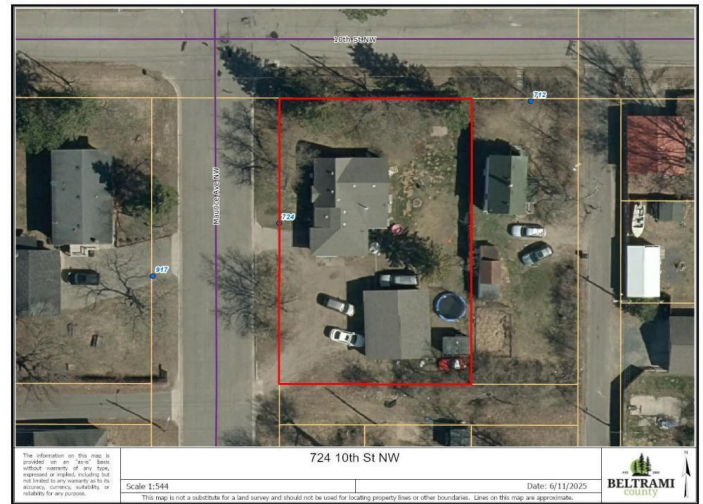
\$165,000
MLS 6737499 Residential
724 10th Street
Bemidji MN 56601



website: www.AffinityRealEstate.com | email: info@affinityrealestate.com | office: 218-237-3333 | fax: 218-237-3377



\$165,000
 MLS 6737499 Residential
 724 10th Street
 Bemidji MN 56601

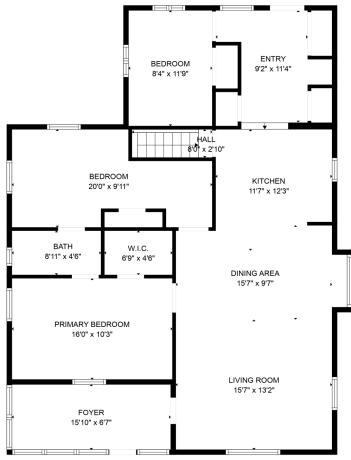


FLOOR PLAN CREATED BY CURBCASA APP. MEASUREMENTS DEEMED HIGHLY RELIABLE BUT NOT GUARANTEED.

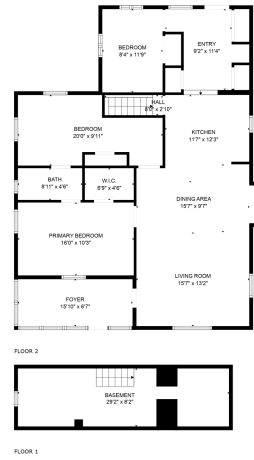
website: www.AffinityRealEstate.com | email: info@affinityrealestate.com | office: 218-237-3333 | fax: 218-237-3377

Affinity
REAL ESTATE INC

\$165,000
MLS 6737499 Residential
724 10th Street
Bemidji MN 56601



FLOOR PLAN CREATED BY CUBICASA APP. MEASUREMENTS DEEMED HIGHLY RELIABLE BUT NOT GUARANTEED.



FLOOR PLAN CREATED BY CUBICASA APP. MEASUREMENTS DEEMED HIGHLY RELIABLE BUT NOT GUARANTEED.

website: www.AffinityRealEstate.com | email: info@affinityrealestate.com | office: 218-237-3333 | fax: 218-237-3377



\$165,000
MLS 6737499 Residential
724 10th Street
Bemidji MN 56601