



MLS 6737778 Land

\$100,000

2.53 Acres
Subdivided

L2,B2 Sanctuary Lane
Brainerd MN 56401

Status: Active

Description:

Sanctuary Ridge is the Brainerd Lakes Area's newest neighborhood, and is officially open for business. Choose from 15 wooded lots, several with impressive views of the Gull River. You'll love the private location, nestled in the forest, yet minutes from the conveniences of Baxter. If outdoor recreation is what you're looking for, that's right out your back door. Also located just minutes from world class golf, fishing, fine dining, and everything else that comes with living in the Brainerd Lakes Area. Come take a look today and secure your spot in Sanctuary Ridge!

Additional Details:

Lot Acres	2.53
Lot Dimensions	177x604x184x597
School District	896
Taxes	\$290
Taxes with Assessments	\$290
Tax Year	2025

Additional Features:

Driving Directions:

From Baxter, west on CR 77, North on Sanctuary Way, stay left to Sanctuary Lane



Listed By:
Positive Realty

Affinity Real Estate Inc. participates in the Regional Multiple Listing Service of Minnesota, Inc Broker Reciprocity (sm) program, allowing us to display other broker's listings on our website. All properties are subject to prior sale, change or withdrawal.



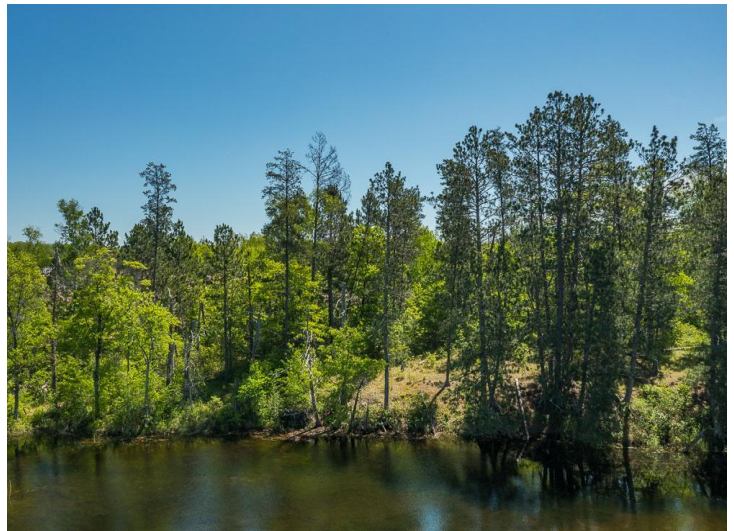
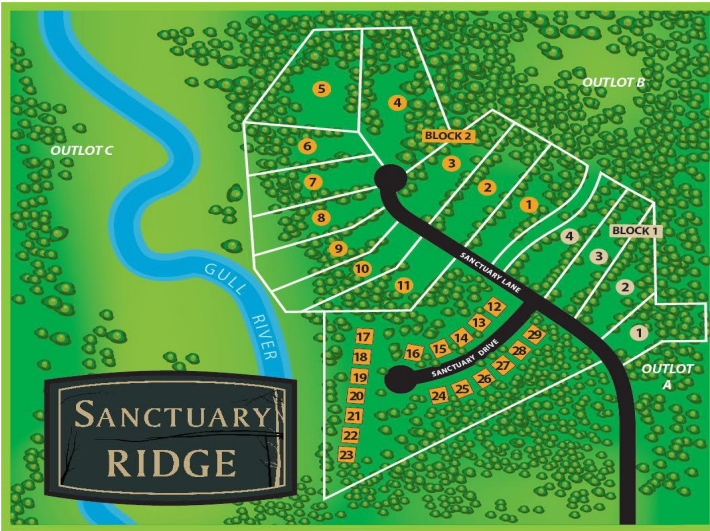
Call Affinity Real Estate

218-237-3333

info@affinityrealestate.com



Affinity Real Estate - 600 Park Avenue South - Park Rapids MN 56470



website: www.AffinityRealEstate.com | email: info@affinityrealestate.com | office: 218-237-3333 | fax: 218-237-3377



\$100,000
 MLS 6737778 Land
 L2,B2 Sanctuary Lane
 Brainerd MN 56401



website: www.AffinityRealEstate.com | email: info@affinityrealestate.com | office: 218-237-3333 | fax: 218-237-3377



\$100,000
MLS 6737778 Land
L2,B2 Sanctuary Lane
Brainerd MN 56401



website: www.AffinityRealEstate.com | email: info@affinityrealestate.com | office: 218-237-3333 | fax: 218-237-3377



\$100,000
 MLS 6737778 Land
 L2,B2 Sanctuary Lane
 Brainerd MN 56401

website: www.AffinityRealEstate.com | email: info@affinityrealestate.com | office: 218-237-3333 | fax:218-237-3377



\$100,000

MLS 6737778 Land
L2,B2 Sanctuary Lane
Brainerd MN 56401