



MLS 6737828 Lake Home

\$699,900

2,536 sq ft
3 bedrooms
2 baths

23148 Glenhaven Drive
Nevis MN 56467

Waterfront: Spider Lake (29011700)

Status: Pending

Description:

Discover this stunning 3-bedroom, 2-bath home nestled in on beautiful Spider Lake, surrounded by majestic towering pines, with gentle elevation down to a sandy shoreline. Enjoy the serene ambiance from your inviting lakeside deck, perfect for relaxation and entertaining. This property has undergone extensive renovations on the main and lower level, showcasing a modern kitchen with granite work surfaces, elegant new flooring, and stylish trim throughout. With both an attached heated double garage and a detached triple garage, you'll have ample space for vehicles and storage. Don't miss your chance to experience lakeside living at its finest!

Additional Details:

Year Built	1991
Lot Acres	1.03
Lot Dimensions	165x322x155x262
Garage Stalls	5
School District	308
Taxes	\$3,543
Taxes with Assessments	\$3,764
Tax Year	2025

Additional Features:

Basement: Block, Egress Window(s), Full **Fuel:** Electric, Wood **Garage:** 5 **Heat:** Forced Air, Fireplace(s) **Sewer:** Tank with Drainage Field
Water: Drilled **Air Conditioning:** Central Air

Driving Directions:

From 34/71 in Park Rapids, East on 34 to County 2 in Nevis. North on County 2 to County 40. Left on County 40 to right on Glenhaven Dr. to property.



Listed By:
Wolff & Simon Real Estate

Affinity Real Estate Inc. participates in the Regional Multiple Listing Service of Minnesota, Inc Broker Reciprocity (sm) program, allowing us to display other broker's listings on our website. All properties are subject to prior sale, change or withdrawal.



Call Affinity Real Estate

218-237-3333

info@affinityrealestate.com



Affinity Real Estate - 600 Park Avenue South - Park Rapids MN 56470



website: www.AffinityRealEstate.com | email: info@affinityrealestate.com | office: 218-237-3333 | fax: 218-237-3377



\$699,900
 MLS 6737828 Lake Home
 23148 Glenhaven Drive
 Nevis MN 56467



website: www.AffinityRealEstate.com | email: info@affinityrealestate.com | office: 218-237-3333 | fax: 218-237-3377

Affinity
REAL ESTATE INC

\$699,900

MLS 6737828 Lake Home
23148 Glenhaven Drive
Nevis MN 56467



website: www.AffinityRealEstate.com | email: info@affinityrealestate.com | office: 218-237-3333 | fax: 218-237-3377

Affinity
REAL ESTATE INC

\$699,900
MLS 6737828 Lake Home
23148 Glenhaven Drive
Nevis MN 56467



website: www.AffinityRealEstate.com | email: info@affinityrealestate.com | office: 218-237-3333 | fax: 218-237-3377

Affinity
REAL ESTATE INC

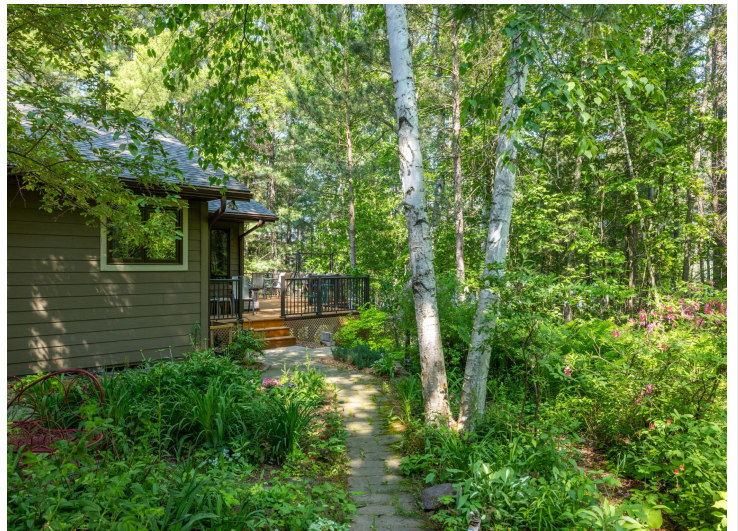
\$699,900
MLS 6737828 Lake Home
23148 Glenhaven Drive
Nevis MN 56467



website: www.AffinityRealEstate.com | email: info@affinityrealestate.com | office: 218-237-3333 | fax: 218-237-3377

Affinity
REAL ESTATE INC

\$699,900
MLS 6737828 Lake Home
23148 Glenhaven Drive
Nevis MN 56467



website: www.AffinityRealEstate.com | email: info@affinityrealestate.com | office: 218-237-3333 | fax: 218-237-3377



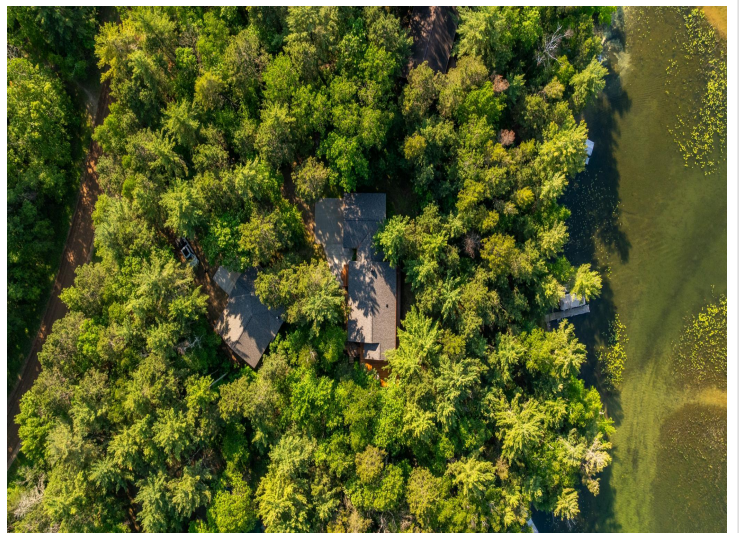
\$699,900
 MLS 6737828 Lake Home
 23148 Glenhaven Drive
 Nevis MN 56467



website: www.AffinityRealEstate.com | email: info@affinityrealestate.com | office: 218-237-3333 | fax: 218-237-3377



\$699,900
 MLS 6737828 Lake Home
 23148 Glenhaven Drive
 Nevis MN 56467



website: www.AffinityRealEstate.com | email: info@affinityrealestate.com | office: 218-237-3333 | fax: 218-237-3377



\$699,900
MLS 6737828 Lake Home
23148 Glenhaven Drive
Nevis MN 56467



website: www.AffinityRealEstate.com | email: info@affinityrealestate.com | office: 218-237-3333 | fax: 218-237-3377



\$699,900
 MLS 6737828 Lake Home
 23148 Glenhaven Drive
 Nevis MN 56467