



MLS 6737884 Residential

\$425,000

2,848 sq ft
4 bedrooms
3 baths

7270 Stone Ridge
Brainerd MN 56401

Status: Pending

Description:

Welcome to this gorgeous property nestled on 2.5 acres just minutes from town. This charming property offers a perfect blend of comfort and convenience, situated in a quiet, friendly neighborhood adorned with trees and abundant wildlife. This well-maintained home with four spacious bedrooms and 3 bathrooms. Large foyer entry, spacious kitchen, with breakfast bar. Walk in closets, huge family room with pine tongue and groove basement. The lot can accommodate the addition of a pole building or extra garage if that is of interest. Come and check out this property today!

Additional Details:

Year Built	2004
Lot Acres	2.51
Lot Dimensions	300x364x300x364
Garage Stalls	3
School District	181
Taxes	\$774
Taxes with Assessments	\$774
Tax Year	2024

Additional Features:

Basement: Block, Full **Fuel:** Natural Gas **Garage:** 3 **Heat:** Forced Air **Sewer:** Private Sewer, Tank with Drainage Field **Water:** Drilled, Well **Air Conditioning:** Central Air

Driving Directions:

Business 371 South to St. Mathias Road to a right on Lone Oak to a left on Lone Oak DR to a Right on Stone Ridge to home and sign.



Listed By:
NextHome Horizons

Affinity Real Estate Inc. participates in the Regional Multiple Listing Service of Minnesota, Inc Broker Reciprocity (sm) program, allowing us to display other broker's listings on our website. All properties are subject to prior sale, change or withdrawal.



Call Affinity Real Estate

218-237-3333

info@affinityrealestate.com



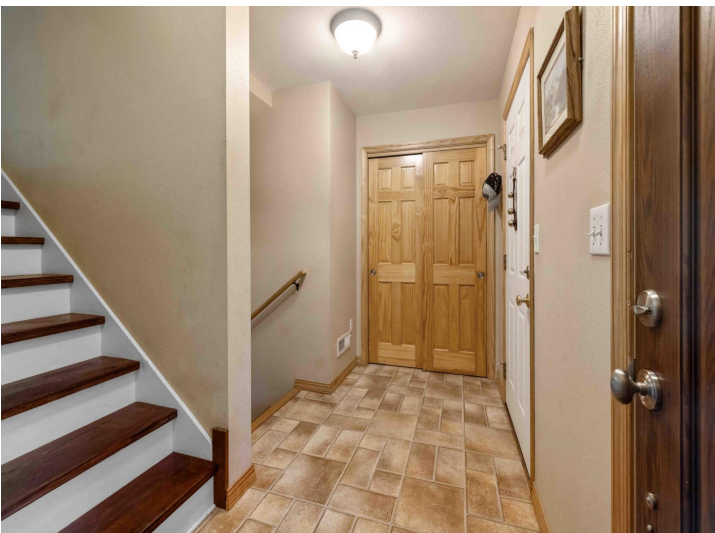
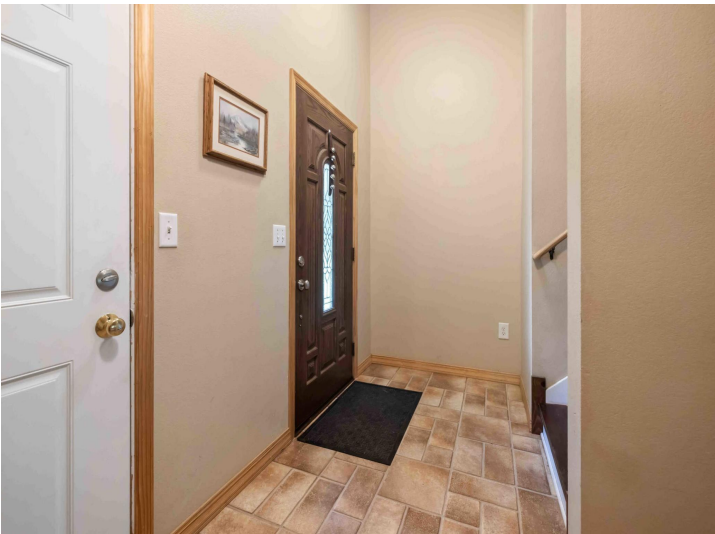
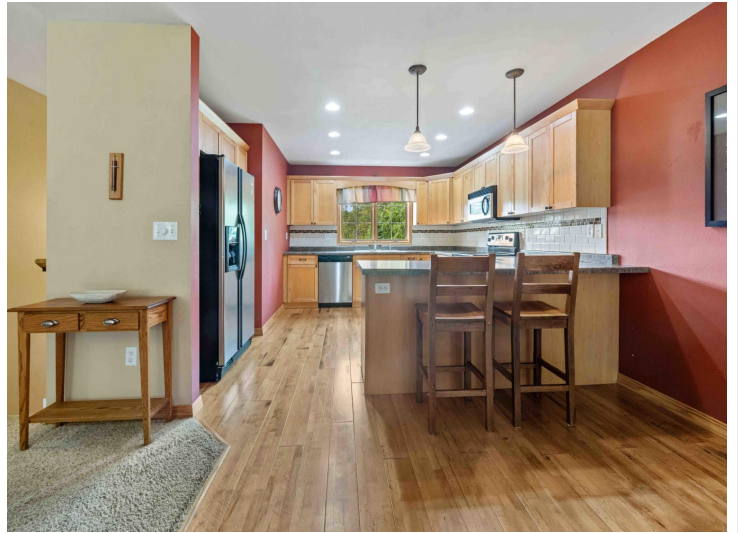
Affinity Real Estate - 600 Park Avenue South - Park Rapids MN 56470



website: www.AffinityRealEstate.com | email: info@affinityrealestate.com | office: 218-237-3333 | fax: 218-237-3377

Affinity
REAL ESTATE INC

\$425,000
MLS 6737884 Residential
7270 Stone Ridge
Brainerd MN 56401



website: www.AffinityRealEstate.com | email: info@affinityrealestate.com | office: 218-237-3333 | fax: 218-237-3377

Affinity
REAL ESTATE INC

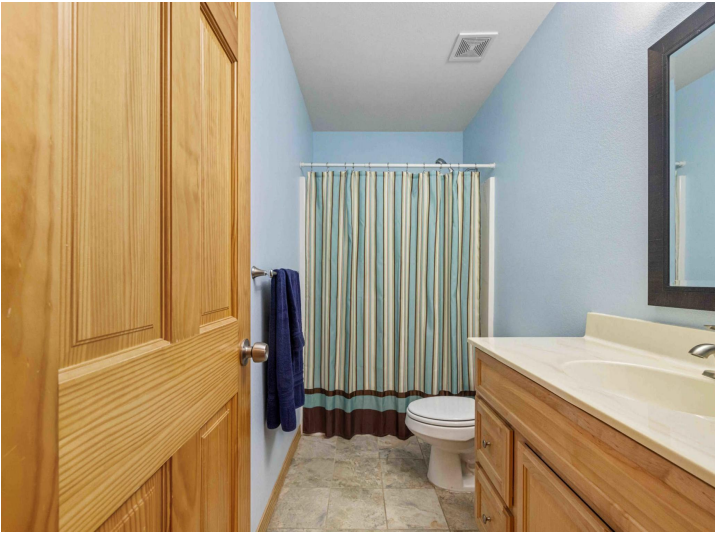
\$425,000
MLS 6737884 Residential
7270 Stone Ridge
Brainerd MN 56401



website: www.AffinityRealEstate.com | email: info@affinityrealestate.com | office: 218-237-3333 | fax: 218-237-3377

Affinity
REAL ESTATE INC

\$425,000
MLS 6737884 Residential
7270 Stone Ridge
Brainerd MN 56401



website: www.AffinityRealEstate.com | email: info@affinityrealestate.com | office: 218-237-3333 | fax: 218-237-3377



\$425,000
 MLS 6737884 Residential
 7270 Stone Ridge
 Brainerd MN 56401



website: www.AffinityRealEstate.com | email: info@affinityrealestate.com | office: 218-237-3333 | fax: 218-237-3377

Affinity
REAL ESTATE INC

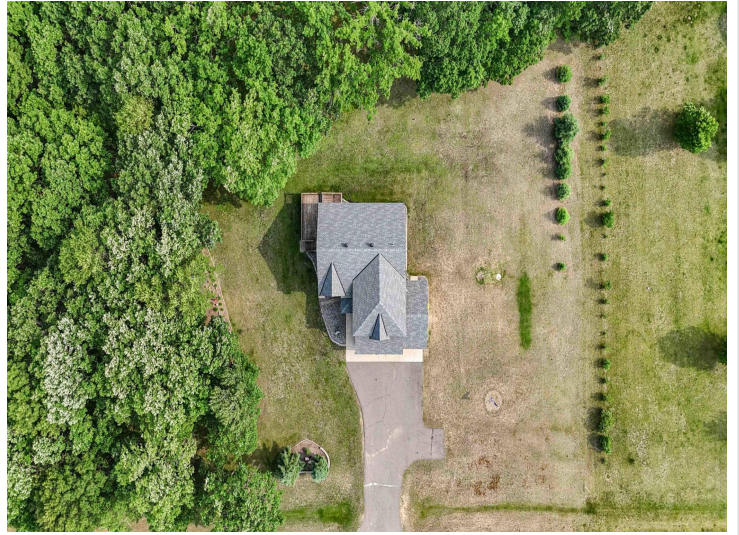
\$425,000
MLS 6737884 Residential
7270 Stone Ridge
Brainerd MN 56401



website: www.AffinityRealEstate.com | email: info@affinityrealestate.com | office: 218-237-3333 | fax: 218-237-3377



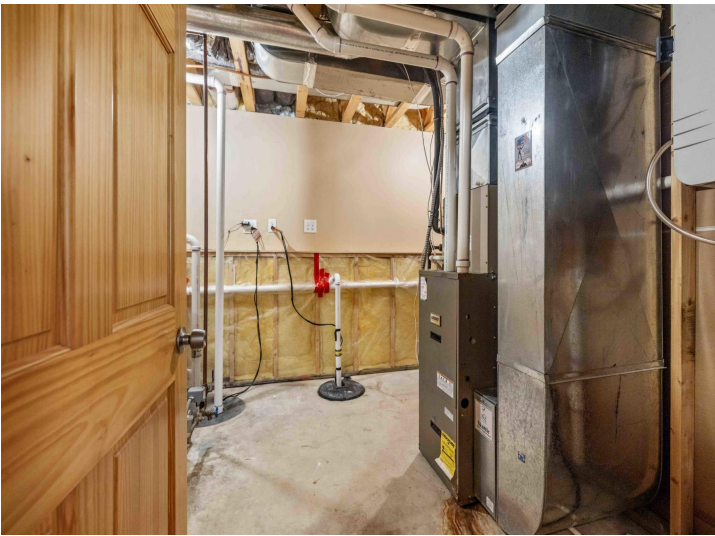
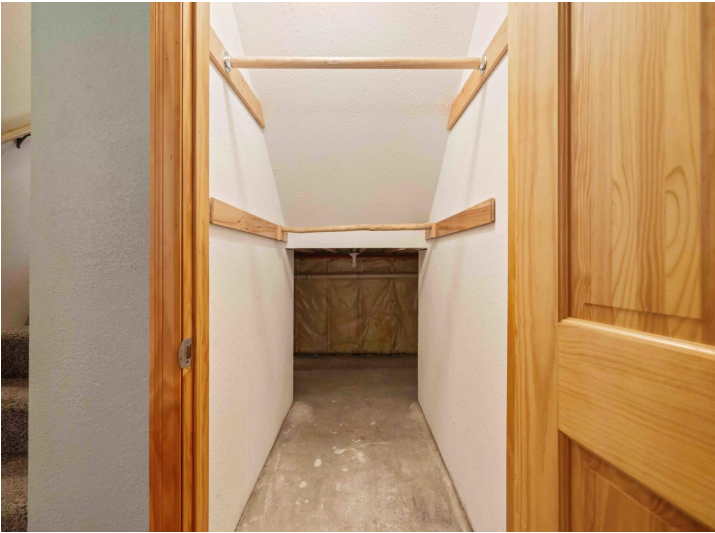
\$425,000
MLS 6737884 Residential
7270 Stone Ridge
Brainerd MN 56401



website: www.AffinityRealEstate.com | email: info@affinityrealestate.com | office: 218-237-3333 | fax: 218-237-3377

Affinity
REAL ESTATE INC

\$425,000
MLS 6737884 Residential
7270 Stone Ridge
Brainerd MN 56401



website: www.AffinityRealEstate.com | email: info@affinityrealestate.com | office: 218-237-3333 | fax: 218-237-3377



\$425,000
MLS 6737884 Residential
7270 Stone Ridge
Brainerd MN 56401