



MLS 6737921 Residential

\$750,000

3,581 sq ft
4 bedrooms
4 baths

11034 Forest View Court
Nisswa MN 56468

Status: Closed

Description:

Tucked at the end of a quiet cul-de-sac near the stunning Pillsbury State Forest, this impeccably maintained 4-bedroom, 4-bathroom home offers 3,581 sq ft of pure comfort and charm on 2.6 acres of wooded privacy. Step inside and fall in love with the rich hardwood floors, solid wood doors, soaring vaulted ceilings, and cozy in-floor heat throughout—including both garages! This home features 2 master en suites on the main level, soaking tub and walk in closets! The kitchen is a chef's dream, featuring stainless steel appliances, a double wall oven, granite countertops, and a spacious layout that's perfect for entertaining. Whether you're hosting movie nights in the theater room, working from your home office, or relaxing in the family room, this home offers a space for every moment. Outside, unwind on your front porch or back deck, relax in your private sauna, and enjoy the peace and beauty of towering trees all around. Both the attached 2-car garage and the massive 36x40 detached garage are fully insulated, heated, equipped with floor drains, and feature professionally epoxied floors—ideal for year-round use and perfect for toys, hobbies, or extra storage. Located just minutes from lakes, resorts, and the endless outdoor adventure the Brainerd Lakes Area is known for—including walking trails that lead straight to Cragun's and Madden's. The paved trails are golf cart friendly, perfect for hauling your clubs (and your crew) to three major golf courses! This property is the perfect blend of luxury, nature, and everyday convenience. Don't miss your chance to make this luxurious hideaway with all the cozy touches your next home!

Additional Details:

Year Built	2003
Lot Acres	2.6
Lot Dimensions	381x418x279x323
Garage Stalls	4
School District	726
Taxes	\$2,738
Taxes with Assessments	\$2,804
Tax Year	2025

Additional Features:

Fuel: Array **Heat:** Forced Air, Hot Water, In-Floor Heating, Radiant, Zoned

Driving Directions:

From Hwy 371, turn left onto County Road 77. Travel about 1.9 miles, turn left onto Beauty Lake Road SW. Take a right onto Forest View Ct SW, the home will be on the right.

Listed By:
Counselor, Realty Brainerd Lakes

Affinity Real Estate Inc. participates in the Regional Multiple Listing Service of Minnesota, Inc Broker Reciprocity (sm) program, allowing us to display other broker's listings on our website. All properties are subject to prior sale, change or withdrawal.



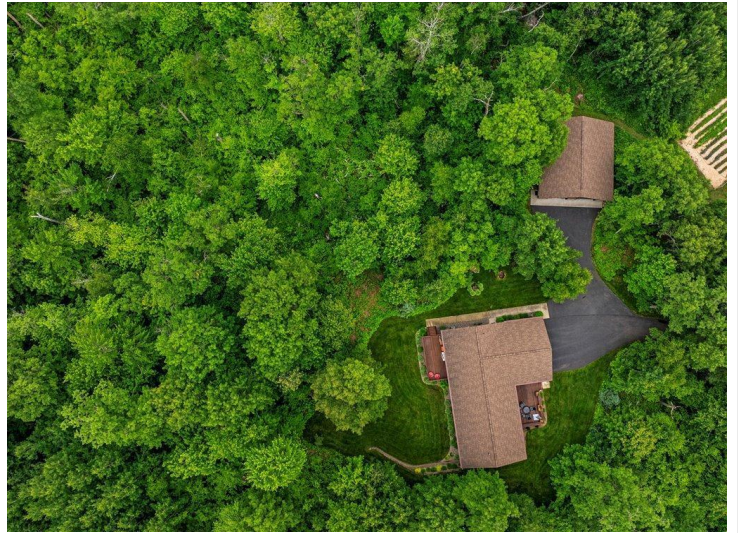
Call Affinity Real Estate

218-237-3333

info@affinityrealestate.com



Affinity Real Estate - 600 Park Avenue South - Park Rapids MN 56470



website: www.AffinityRealEstate.com | email: info@affinityrealestate.com | office: 218-237-3333 | fax: 218-237-3377

Affinity
REAL ESTATE INC

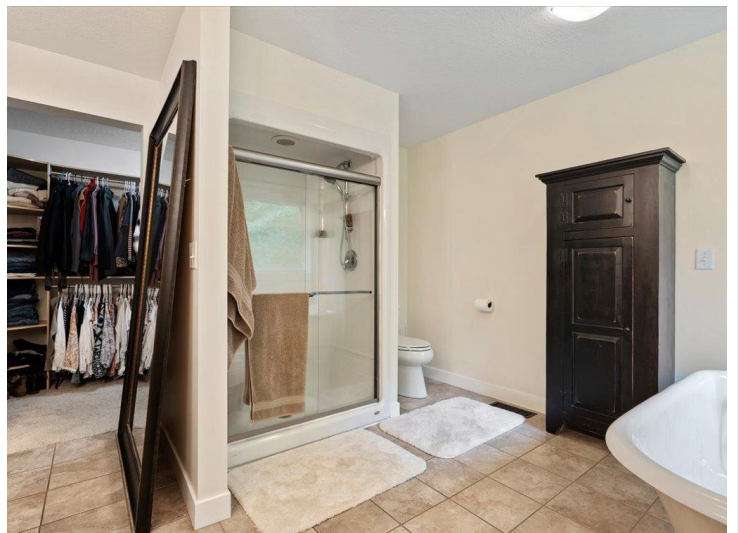
\$750,000
MLS 6737921 Residential
11034 Forest View Court
Nisswa MN 56468



website: www.AffinityRealEstate.com | email: info@affinityrealestate.com | office: 218-237-3333 | fax: 218-237-3377



\$750,000
 MLS 6737921 Residential
 11034 Forest View Court
 Nisswa MN 56468



website: www.AffinityRealEstate.com | email: info@affinityrealestate.com | office: 218-237-3333 | fax: 218-237-3377



\$750,000
 MLS 6737921 Residential
 11034 Forest View Court
 Nisswa MN 56468



website: www.AffinityRealEstate.com | email: info@affinityrealestate.com | office: 218-237-3333 | fax: 218-237-3377

Affinity
REAL ESTATE INC

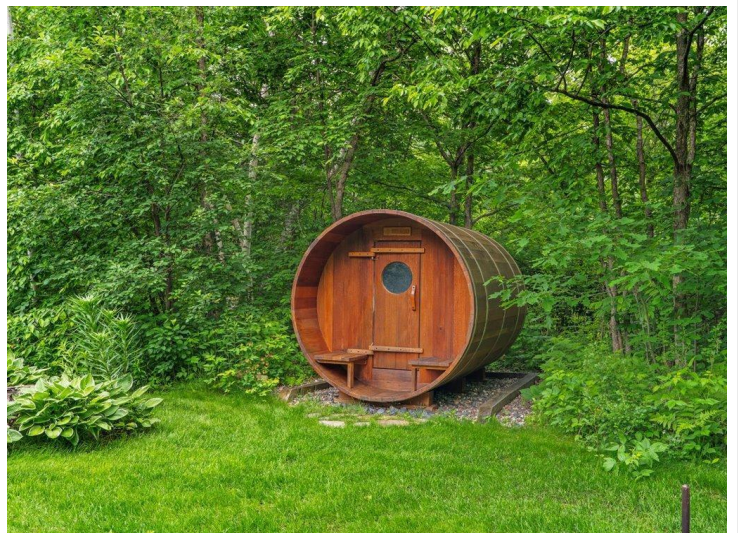
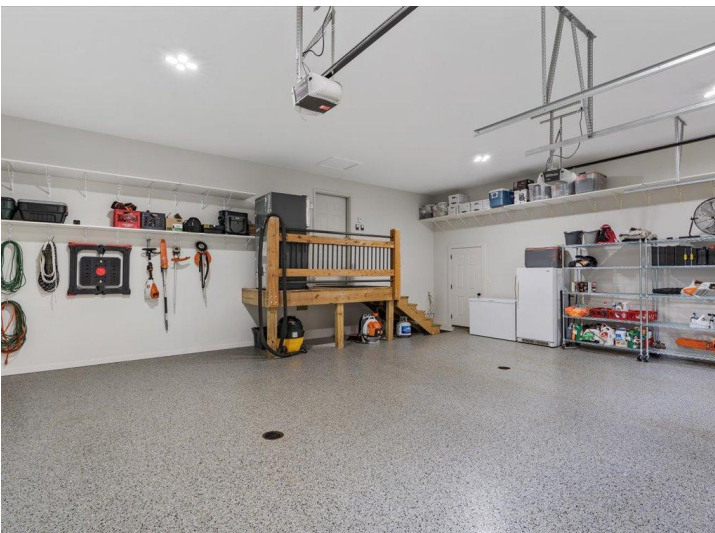
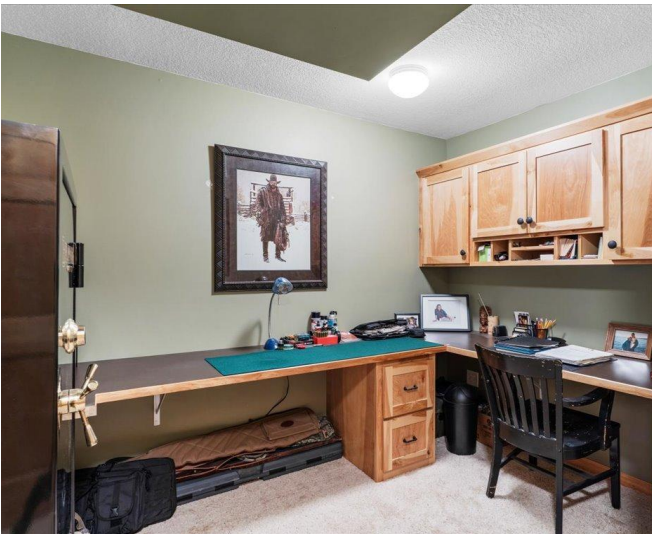
\$750,000
MLS 6737921 Residential
11034 Forest View Court
Nisswa MN 56468



website: www.AffinityRealEstate.com | email: info@affinityrealestate.com | office: 218-237-3333 | fax: 218-237-3377

Affinity
REAL ESTATE INC

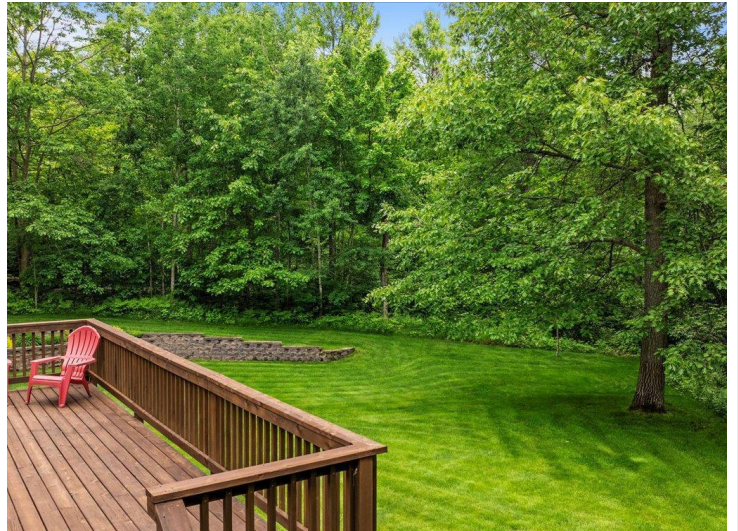
\$750,000
MLS 6737921 Residential
11034 Forest View Court
Nisswa MN 56468



website: www.AffinityRealEstate.com | email: info@affinityrealestate.com | office: 218-237-3333 | fax: 218-237-3377



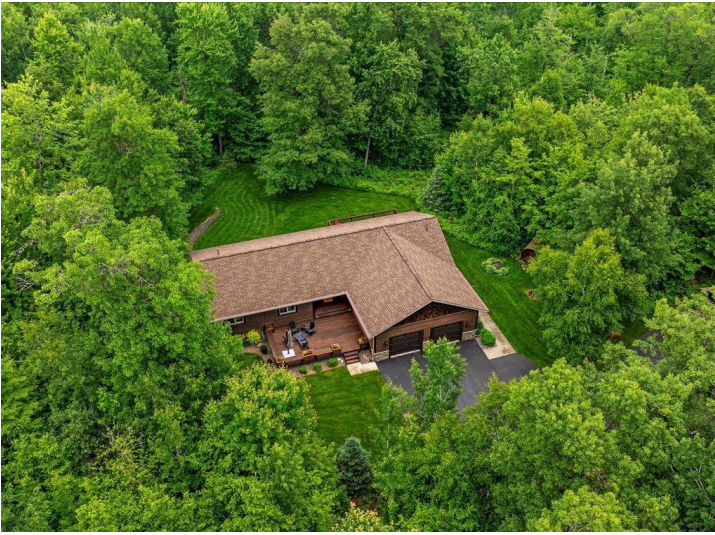
\$750,000
 MLS 6737921 Residential
 11034 Forest View Court
 Nisswa MN 56468



website: www.AffinityRealEstate.com | email: info@affinityrealestate.com | office: 218-237-3333 | fax: 218-237-3377



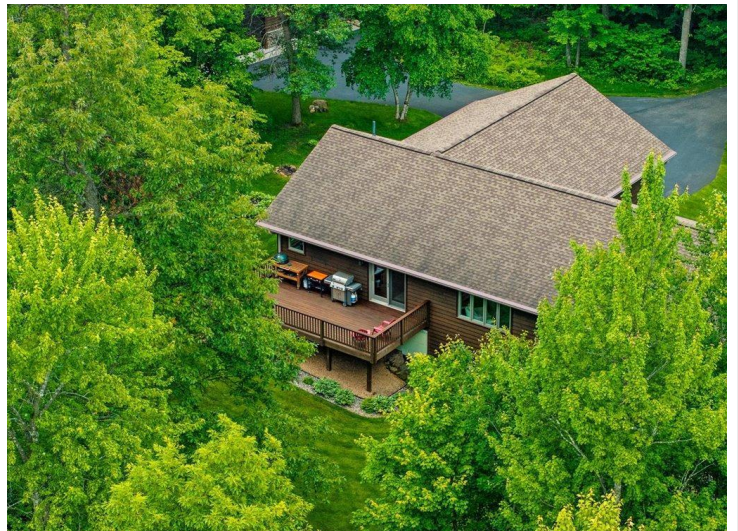
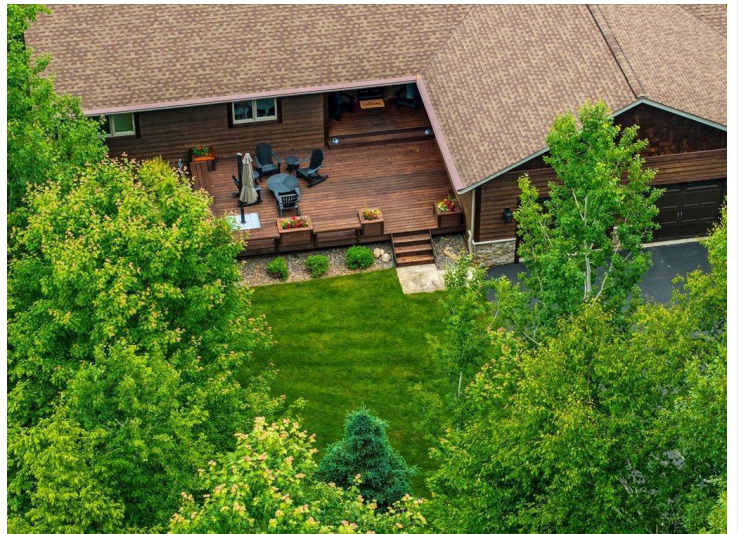
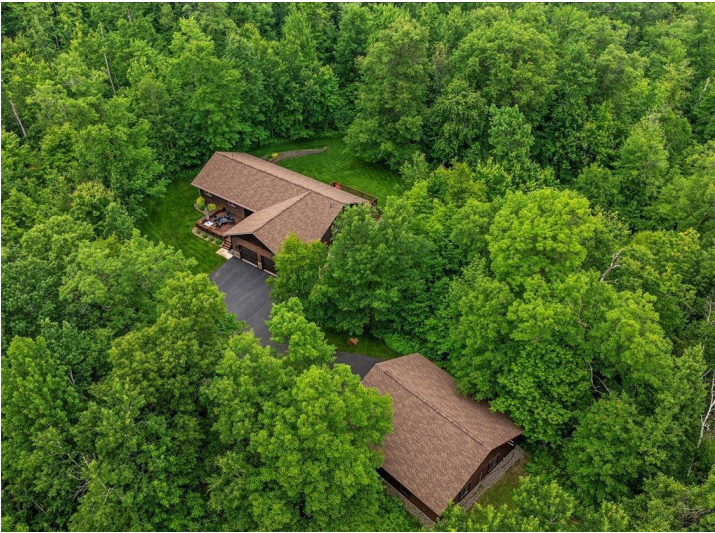
\$750,000
 MLS 6737921 Residential
 11034 Forest View Court
 Nisswa MN 56468



website: www.AffinityRealEstate.com | email: info@affinityrealestate.com | office: 218-237-3333 | fax: 218-237-3377



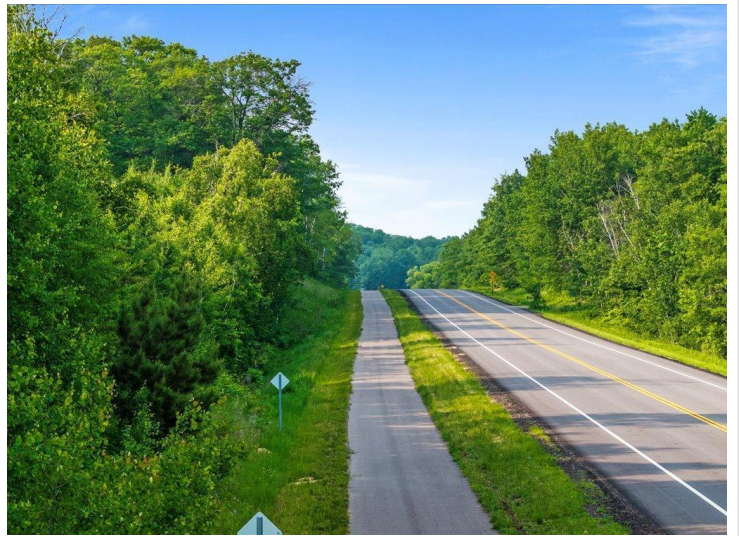
\$750,000
 MLS 6737921 Residential
 11034 Forest View Court
 Nisswa MN 56468



website: www.AffinityRealEstate.com | email: info@affinityrealestate.com | office: 218-237-3333 | fax: 218-237-3377

Affinity
REAL ESTATE INC

\$750,000
MLS 6737921 Residential
11034 Forest View Court
Nisswa MN 56468



website: www.AffinityRealEstate.com | email: info@affinityrealestate.com | office: 218-237-3333 | fax: 218-237-3377

Affinity
REAL ESTATE INC

\$750,000

MLS 6737921 Residential
11034 Forest View Court
Nisswa MN 56468

website: www.AffinityRealEstate.com | email: info@affinityrealestate.com | office: 218-237-3333 | fax:218-237-3377



\$750,000

MLS 6737921 Residential
11034 Forest View Court
Nisswa MN 56468