



MLS 6738036 Lake Home

**\$9,995,000**

22,613 sq ft  
23 bedrooms  
21 baths

36463 Butternut Point Road  
Pequot Lakes MN 56472

Waterfront: Whitefish Lake  
(18031000)

Status: Active

**Description:**

A rare opportunity awaits on the prestigious Whitefish Chain of Lakes. Set on 3.41 pine-studded acres with over 2,000 feet of pristine shoreline, this legacy retreat blends luxury, privacy, and natural beauty. Expertly constructed by Nor-Son, every finish and detail has been meticulously chosen.

At its heart is a grand, custom-built main lodge featuring soaring ceilings, impeccable living spaces, and breath-taking lake views. Six guest cabins provide comfort and flexibility for family and friends. Two detached garages offer additional guest accommodations, including a bunkhouse and full private suite.

Designed for recreation and relaxation, the property includes a private boat launch, protected inlet, sprawling beach with volleyball court, and lakeside fire pit. Enjoy as a private, luxurious retreat. This iconic Brainerd Lakes estate is a once-in-a-lifetime offering.

**Additional Details:**

Year Built	2001
Lot Acres	3.41
Lot Dimensions	irregular
Garage Stalls	6
School District	186
Taxes	\$44,472
Taxes with Assessments	\$44,472
Tax Year	2025

**Additional Features:**

**Basement:** Crawl Space, Finished, Full, Concrete **Fuel:** Natural Gas **Garage:** 6 **Heat:** Forced Air, Fireplace(s) **Sewer:** Shared Septic, Tank with Drainage Field **Water:** Drilled, Shared System, Well **Air Conditioning:** Central Air

**Driving Directions:**

From County Road 16 at Ideal Twp Town Hall/Fire Dept, head North on Butternut Point Road to property and gate at end of road.



Listed By:  
Coldwell Banker Realty

Affinity Real Estate Inc. participates in the Regional Multiple Listing Service of Minnesota, Inc Broker Reciprocity (sm) program, allowing us to display other broker's listings on our website. All properties are subject to prior sale, change or withdrawal.



**Call Affinity Real Estate**

**218-237-3333**

**info@affinityrealestate.com**



**Affinity Real Estate - 600 Park Avenue South - Park Rapids MN 56470**





website: [www.AffinityRealEstate.com](http://www.AffinityRealEstate.com) | email: [info@affinityrealestate.com](mailto:info@affinityrealestate.com) | office: 218-237-3333 | fax: 218-237-3377



**\$9,995,000**

MLS 6738036 Lake Home  
36463 Butternut Point Road  
Pequot Lakes MN 56472





website: [www.AffinityRealEstate.com](http://www.AffinityRealEstate.com) | email: [info@affinityrealestate.com](mailto:info@affinityrealestate.com) | office: 218-237-3333 | fax: 218-237-3377

**Affinity**  
REAL ESTATE INC

**\$9,995,000**

MLS 6738036 Lake Home  
36463 Butternut Point Road  
Pequot Lakes MN 56472





website: [www.AffinityRealEstate.com](http://www.AffinityRealEstate.com) | email: [info@affinityrealestate.com](mailto:info@affinityrealestate.com) | office: 218-237-3333 | fax: 218-237-3377

**Affinity**  
REAL ESTATE INC

**\$9,995,000**

MLS 6738036 Lake Home  
36463 Butternut Point Road  
Pequot Lakes MN 56472





website: [www.AffinityRealEstate.com](http://www.AffinityRealEstate.com) | email: [info@affinityrealestate.com](mailto:info@affinityrealestate.com) | office: 218-237-3333 | fax: 218-237-3377

**Affinity**  
REAL ESTATE INC

**\$9,995,000**  
MLS 6738036 Lake Home  
36463 Butternut Point Road  
Pequot Lakes MN 56472





website: [www.AffinityRealEstate.com](http://www.AffinityRealEstate.com) | email: [info@affinityrealestate.com](mailto:info@affinityrealestate.com) | office: 218-237-3333 | fax: 218-237-3377

**Affinity**  
REAL ESTATE INC

**\$9,995,000**

MLS 6738036 Lake Home  
36463 Butternut Point Road  
Pequot Lakes MN 56472





website: [www.AffinityRealEstate.com](http://www.AffinityRealEstate.com) | email: [info@affinityrealestate.com](mailto:info@affinityrealestate.com) | office: 218-237-3333 | fax: 218-237-3377



**\$9,995,000**  
 MLS 6738036 Lake Home  
 36463 Butternut Point Road  
 Pequot Lakes MN 56472





website: [www.AffinityRealEstate.com](http://www.AffinityRealEstate.com) | email: [info@affinityrealestate.com](mailto:info@affinityrealestate.com) | office: 218-237-3333 | fax: 218-237-3377

**Affinity**  
REAL ESTATE INC

**\$9,995,000**

MLS 6738036 Lake Home  
36463 Butternut Point Road  
Pequot Lakes MN 56472





website: [www.AffinityRealEstate.com](http://www.AffinityRealEstate.com) | email: [info@affinityrealestate.com](mailto:info@affinityrealestate.com) | office: 218-237-3333 | fax: 218-237-3377



**\$9,995,000**  
MLS 6738036 Lake Home  
36463 Butternut Point Road  
Pequot Lakes MN 56472





website: [www.AffinityRealEstate.com](http://www.AffinityRealEstate.com) | email: [info@affinityrealestate.com](mailto:info@affinityrealestate.com) | office: 218-237-3333 | fax: 218-237-3377



**\$9,995,000**

MLS 6738036 Lake Home  
36463 Butternut Point Road  
Pequot Lakes MN 56472





website: [www.AffinityRealEstate.com](http://www.AffinityRealEstate.com) | email: [info@affinityrealestate.com](mailto:info@affinityrealestate.com) | office: 218-237-3333 | fax: 218-237-3377



**\$9,995,000**  
 MLS 6738036 Lake Home  
 36463 Butternut Point Road  
 Pequot Lakes MN 56472





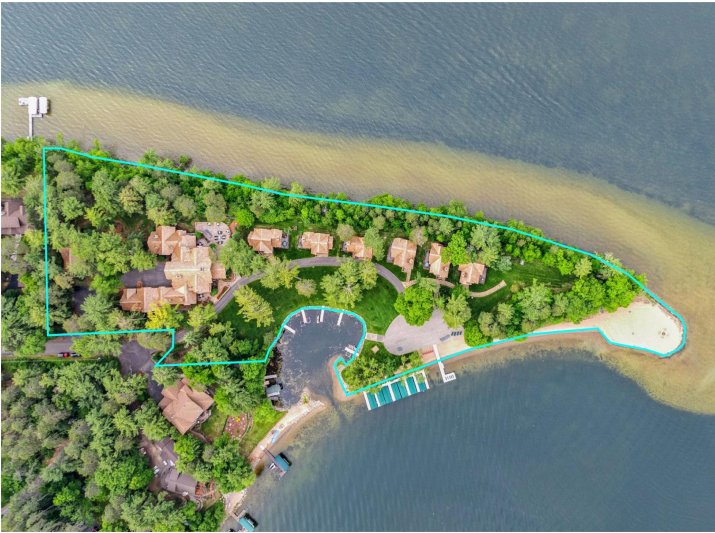
website: [www.AffinityRealEstate.com](http://www.AffinityRealEstate.com) | email: [info@affinityrealestate.com](mailto:info@affinityrealestate.com) | office: 218-237-3333 | fax: 218-237-3377

**Affinity**  
REAL ESTATE INC

**\$9,995,000**

MLS 6738036 Lake Home  
36463 Butternut Point Road  
Pequot Lakes MN 56472





website: [www.AffinityRealEstate.com](http://www.AffinityRealEstate.com) | email: [info@affinityrealestate.com](mailto:info@affinityrealestate.com) | office: 218-237-3333 | fax:218-237-3377



**\$9,995,000**

MLS 6738036 Lake Home  
36463 Butternut Point Road  
Pequot Lakes MN 56472