



MLS 6738044 Residential

\$375,000

1,296 sq ft
2 bedrooms
2 baths

10244 State Highway 87
Menahga MN 56464

Status: Active

Description:

Discover the perfect blend of privacy, functionality, and opportunity—just five minutes from Menahga. Situated on 40 acres, this well-maintained 2-bedroom, 2-bathroom home provides ample space for recreation, hobby farming, or peaceful country living. The property features approximately 15 wooded acres on the north side, which include some nice hardwoods, along with lower bedding areas that offer excellent deer hunting potential. Fenced pasture acreage offers flexibility for livestock or potential tillable acreage. The 40x32 detached shop is ideal for storing vehicles, equipment, or serving as a workshop, and two additional sheds provide ample storage space. Inside, you'll find a practical layout filled with natural light and everyday comforts, conveniently located off State Highway 87 with easy access to Spirit, Stocking, and Blueberry Lakes, as well as Blueberry Pines Golf Course.

Additional Details:

Year Built	1915
Lot Acres	40
Lot Dimensions	1320 x 1320
Garage Stalls	3
School District	821
Taxes	\$1,474
Taxes with Assessments	\$1,474
Tax Year	2025

Additional Features:

Basement: None **Fuel:** Electric, Propane **Garage:** 3 **Heat:** Baseboard **Sewer:** Tank with Drainage Field **Water:** Drilled **Air Conditioning:** Wall Unit(s)

Driving Directions:

West on 87 from Menahga 3.4 miles.



Listed By:
Premier Realty Group

Affinity Real Estate Inc. participates in the Regional Multiple Listing Service of Minnesota, Inc Broker Reciprocity (sm) program, allowing us to display other broker's listings on our website. All properties are subject to prior sale, change or withdrawal.



Call Affinity Real Estate

218-237-3333

info@affinityrealestate.com



Affinity Real Estate - 600 Park Avenue South - Park Rapids MN 56470

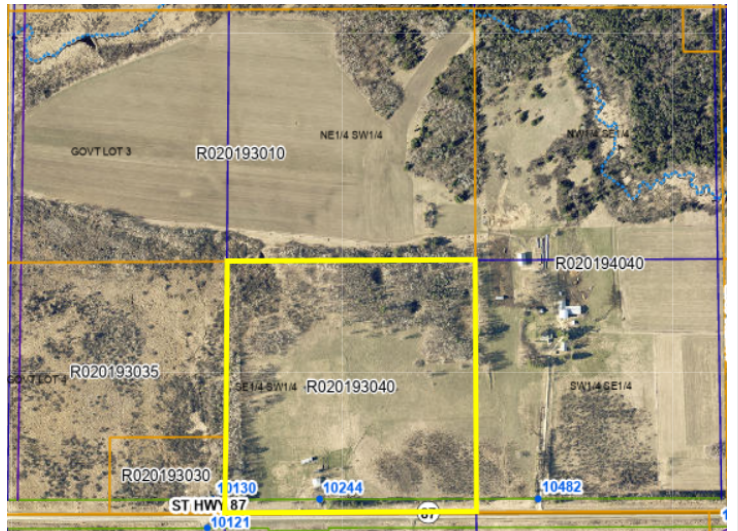


website: www.AffinityRealEstate.com | email: info@affinityrealestate.com | office: 218-237-3333 | fax: 218-237-3377

Affinity
REAL ESTATE INC

\$375,000

MLS 6738044 Residential
10244 State Highway 87
Menahga MN 56464



website: www.AffinityRealEstate.com | email: info@affinityrealestate.com | office: 218-237-3333 | fax: 218-237-3377



\$375,000
 MLS 6738044 Residential
 10244 State Highway 87
 Menahga MN 56464

website: www.AffinityRealEstate.com | email: info@affinityrealestate.com | office: 218-237-3333 | fax:218-237-3377



\$375,000

MLS 6738044 Residential
10244 State Highway 87
Menahga MN 56464

website: www.AffinityRealEstate.com | email: info@affinityrealestate.com | office: 218-237-3333 | fax:218-237-3377



\$375,000

MLS 6738044 Residential
10244 State Highway 87
Menahga MN 56464

website: www.AffinityRealEstate.com | email: info@affinityrealestate.com | office: 218-237-3333 | fax:218-237-3377



\$375,000

MLS 6738044 Residential
10244 State Highway 87
Menahga MN 56464

website: www.AffinityRealEstate.com | email: info@affinityrealestate.com | office: 218-237-3333 | fax:218-237-3377



\$375,000

MLS 6738044 Residential
10244 State Highway 87
Menahga MN 56464

website: www.AffinityRealEstate.com | email: info@affinityrealestate.com | office: 218-237-3333 | fax:218-237-3377



\$375,000

MLS 6738044 Residential
10244 State Highway 87
Menahga MN 56464

website: www.AffinityRealEstate.com | email: info@affinityrealestate.com | office: 218-237-3333 | fax:218-237-3377



\$375,000

MLS 6738044 Residential
10244 State Highway 87
Menahga MN 56464

website: www.AffinityRealEstate.com | email: info@affinityrealestate.com | office: 218-237-3333 | fax:218-237-3377



\$375,000

MLS 6738044 Residential
10244 State Highway 87
Menahga MN 56464

website: www.AffinityRealEstate.com | email: info@affinityrealestate.com | office: 218-237-3333 | fax:218-237-3377



\$375,000

MLS 6738044 Residential
10244 State Highway 87
Menahga MN 56464

website: www.AffinityRealEstate.com | email: info@affinityrealestate.com | office: 218-237-3333 | fax:218-237-3377



\$375,000

MLS 6738044 Residential
10244 State Highway 87
Menahga MN 56464

website: www.AffinityRealEstate.com | email: info@affinityrealestate.com | office: 218-237-3333 | fax:218-237-3377



\$375,000

MLS 6738044 Residential
10244 State Highway 87
Menahga MN 56464