



MLS 6738359 Lake Home

**\$227,500**

2,420 sq ft  
2 bedrooms  
2 baths

1283 Island Lake Drive  
Backus MN 56435

Waterfront: Island Lake (Powers  
Twp.) (11036000)

Status: Pending

#### Description:

Log home on 1.62 wooded acres with 199 ft of frontage on Island Lake! Built in 1985, this 2BR/2BA home offers over 2,400 sq ft with a walkout basement, 2-stall attached garage, and spacious open floorplan. Features include vaulted wood ceilings, a stone wood-burning fireplace, center island kitchen, and a 4-season porch with peaceful views. The walkout basement offers bonus rooms, a second bath, and expansion potential. While some updates are needed, this is a great opportunity to create your dream retreat. Private setting with mature trees and a natural shoreline, perfect for quiet paddling or enjoying wildlife. Located just outside Backus with easy access to trails, lakes, and public land.

#### Additional Details:

Year Built	1985
Lot Acres	1.62
Lot Dimensions	1.62 acres
Garage Stalls	2
School District	2174
Taxes	\$1,784
Taxes with Assessments	\$1,850
Tax Year	2025

#### Additional Features:

**Basement:** Partially Finished, Walkout **Fuel:** Propane **Garage:** 2 **Heat:** Forced Air **Sewer:** Tank with Drainage Field **Water:** Well **Air Conditioning:** Central Air

#### Driving Directions:

From Backus, North on 45th Ave NW 1.7 miles. Left on Pine Mountain Lk Rd NW .2 miles. Right on Island Lake Dr NW to property on left.



Listed By:  
Gallery of Homes

Affinity Real Estate Inc. participates in the Regional Multiple Listing Service of Minnesota, Inc Broker Reciprocity (sm) program, allowing us to display other broker's listings on our website. All properties are subject to prior sale, change or withdrawal.



Call Affinity Real Estate

**218-237-3333**

[info@affinityrealestate.com](mailto:info@affinityrealestate.com)



Affinity Real Estate - 600 Park Avenue South - Park Rapids MN 56470





website: [www.AffinityRealEstate.com](http://www.AffinityRealEstate.com) | email: [info@affinityrealestate.com](mailto:info@affinityrealestate.com) | office: 218-237-3333 | fax: 218-237-3377

**Affinity**  
REAL ESTATE INC

**\$227,500**  
MLS 6738359 Lake Home  
1283 Island Lake Drive  
Backus MN 56435





website: [www.AffinityRealEstate.com](http://www.AffinityRealEstate.com) | email: [info@affinityrealestate.com](mailto:info@affinityrealestate.com) | office: 218-237-3333 | fax: 218-237-3377



**\$227,500**  
 MLS 6738359 Lake Home  
 1283 Island Lake Drive  
 Backus MN 56435





website: [www.AffinityRealEstate.com](http://www.AffinityRealEstate.com) | email: [info@affinityrealestate.com](mailto:info@affinityrealestate.com) | office: 218-237-3333 | fax: 218-237-3377



**\$227,500**  
MLS 6738359 Lake Home  
1283 Island Lake Drive  
Backus MN 56435



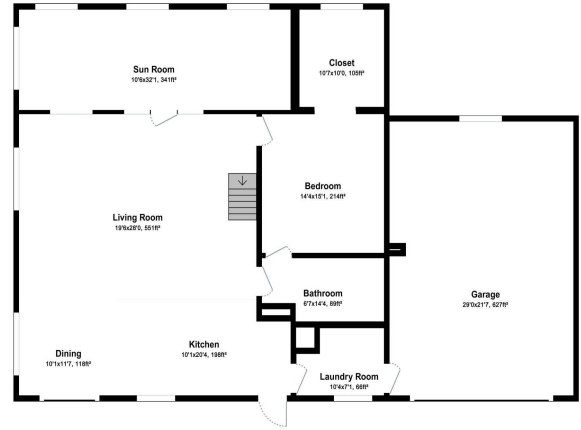


website: [www.AffinityRealEstate.com](http://www.AffinityRealEstate.com) | email: [info@affinityrealestate.com](mailto:info@affinityrealestate.com) | office: 218-237-3333 | fax: 218-237-3377



**\$227,500**  
 MLS 6738359 Lake Home  
 1283 Island Lake Drive  
 Backus MN 56435





For illustration purposes only. Not to scale.

Main Floor

website: [www.AffinityRealEstate.com](http://www.AffinityRealEstate.com) | email: [info@affinityrealestate.com](mailto:info@affinityrealestate.com) | office: 218-237-3333 | fax: 218-237-3377



**\$227,500**

MLS 6738359 Lake Home  
 1283 Island Lake Drive  
 Backus MN 56435