



MLS 6738432 Land

\$129,900

40.19 Acres
Raw Land

12084 County Road 144
Brainerd MN 56401

Status: Active

Description:

Are you looking for a slice of heaven on earth...go no further! This 40.19 acre parcel features something for everyone! Just east of Brainerd, this ideal location provides not only a few building sites but caters to the outdoor enthusiast! Either hunt in your own backyard or head down the road to the public access and fish in South Long Lake or in one of the many other lakes in the surrounding area. And don't forget all the snowmobile trails & four wheeling paths that provide outdoor recreation throughout the year. If that doesn't provide you enough to do, head over to the Brainerd International Speedway to take in one of the races or stop by Paul Bunyan Land and spend some time with family. Build a home on this property and you will get your needed privacy, but will be just minutes away from all the attractions & necessities! Hurry on this one!

Additional Details:

Lot Acres	40.19
Lot Dimensions	1330x1312x1330x1312
School District	896
Taxes	\$270
Taxes with Assessments	\$270
Tax Year	2025

Additional Features:

Driving Directions:

From Brainerd East on HWY 18 to right on county Road 144 then left onto property.



Listed By:
Edina Realty, Inc.

Affinity Real Estate Inc. participates in the Regional Multiple Listing Service of Minnesota, Inc Broker Reciprocity (sm) program, allowing us to display other broker's listings on our website. All properties are subject to prior sale, change or withdrawal.



Call Affinity Real Estate

218-237-3333

info@affinityrealestate.com



Affinity Real Estate - 600 Park Avenue South - Park Rapids MN 56470



website: www.AffinityRealEstate.com | email: info@affinityrealestate.com | office: 218-237-3333 | fax: 218-237-3377



\$129,900
MLS 6738432 Land
12084 County Road 144
Brainerd MN 56401



website: www.AffinityRealEstate.com | email: info@affinityrealestate.com | office: 218-237-3333 | fax:218-237-3377



\$129,900
MLS 6738432 Land
12084 County Road 144
Brainerd MN 56401



website: www.AffinityRealEstate.com | email: info@affinityrealestate.com | office: 218-237-3333 | fax:218-237-3377

Affinity
REAL ESTATE INC

\$129,900
MLS 6738432 Land
12084 County Road 144
Brainerd MN 56401



website: www.AffinityRealEstate.com | email: info@affinityrealestate.com | office: 218-237-3333 | fax:218-237-3377



\$129,900
MLS 6738432 Land
12084 County Road 144
Brainerd MN 56401



website: www.AffinityRealEstate.com | email: info@affinityrealestate.com | office: 218-237-3333 | fax:218-237-3377



\$129,900
MLS 6738432 Land
12084 County Road 144
Brainerd MN 56401



website: www.AffinityRealEstate.com | email: info@affinityrealestate.com | office: 218-237-3333 | fax:218-237-3377



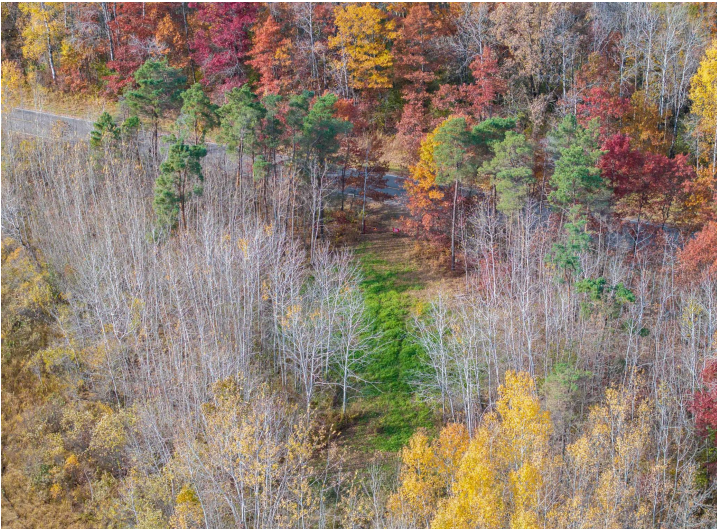
\$129,900
MLS 6738432 Land
12084 County Road 144
Brainerd MN 56401



website: www.AffinityRealEstate.com | email: info@affinityrealestate.com | office: 218-237-3333 | fax:218-237-3377



\$129,900
MLS 6738432 Land
12084 County Road 144
Brainerd MN 56401



website: www.AffinityRealEstate.com | email: info@affinityrealestate.com | office: 218-237-3333 | fax:218-237-3377



\$129,900
MLS 6738432 Land
12084 County Road 144
Brainerd MN 56401



website: www.AffinityRealEstate.com | email: info@affinityrealestate.com | office: 218-237-3333 | fax:218-237-3377



\$129,900
MLS 6738432 Land
12084 County Road 144
Brainerd MN 56401



website: www.AffinityRealEstate.com | email: info@affinityrealestate.com | office: 218-237-3333 | fax:218-237-3377



\$129,900
MLS 6738432 Land
12084 County Road 144
Brainerd MN 56401



website: www.AffinityRealEstate.com | email: info@affinityrealestate.com | office: 218-237-3333 | fax:218-237-3377



\$129,900
MLS 6738432 Land
12084 County Road 144
Brainerd MN 56401