



MLS 6738834 Lake Land

\$55,000

Description:

Beautiful lot across from Lookout Lake, featuring a cleared area ready for your future home or a storage shed for all your toys! Located on a private, dead-end road with a scenic wetland backdrop-perfect for peaceful views and added privacy. Whether you're ready to build now or planning for the future, we have builder options available or bring your own vision to life on this great lot! There is a second lot attached for sale as well, see mls #6738802.

Additional Details:

Lot Acres	1.55
Lot Dimensions	99x250x188x167x402
School District	182
Taxes	\$108
Taxes with Assessments	\$108
Tax Year	2024

Additional Features:

Driving Directions:

Take County Road 12 to Klondyke Road, turn right, property is on the right.



Listed By:
Counselor Realty Brainerd Lakes

Affinity Real Estate Inc. participates in the Regional Multiple Listing Service of Minnesota, Inc Broker Reciprocity (sm) program, allowing us to display other broker's listings on our website. All properties are subject to prior sale, change or withdrawal.



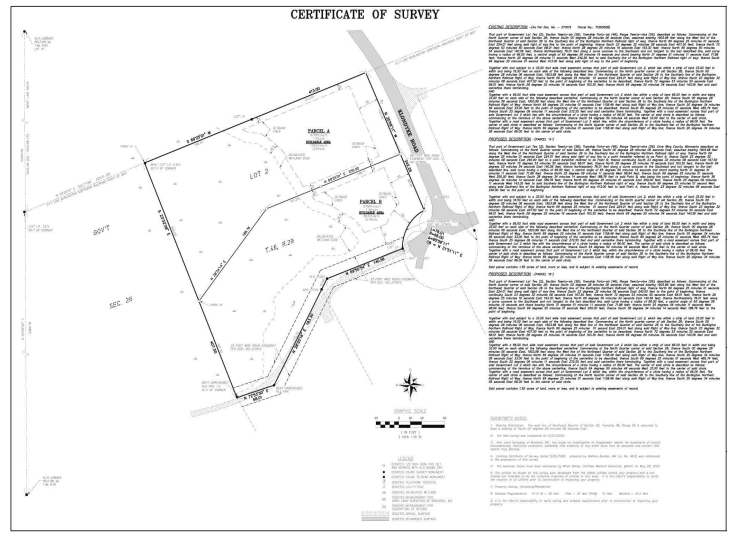
Call Affinity Real Estate

218-237-3333

info@affinityrealestate.com



Affinity Real Estate - 600 Park Avenue South - Park Rapids MN 56470



website: www.AffinityRealEstate.com | email: info@affinityrealestate.com | office: 218-237-3333 | fax: 218-237-3377



\$55,000
 MLS 6738834 Lake Land
 Parcel B Klondyke Road
 Ironton MN 56455



website: www.AffinityRealEstate.com | email: info@affinityrealestate.com | office: 218-237-3333 | fax:218-237-3377



\$55,000

MLS 6738834 Lake Land
Parcel B Klondyke Road
Ironton MN 56455