



MLS 6738870 Residential

\$399,900

1,632 sq ft
3 bedrooms
3 baths

16696 Eclipse Drive
Park Rapids MN 56470

Status: Active

Description:

Escape to a premier quality and secluded, 2023 custom built, one-level living home in the country with 4 acres and located between Park Rapids and Nevis. You will have that warm feeling as soon as you walk onto the covered porch and through the doors to see a great kitchen and dining area, featuring vaulted ceilings, custom knotty alder cabinets, stainless steel appliances and premium LVP flooring throughout. This 3 bedroom, 3 bath home has radiant in-floor heat with multiple zones including an attached and spacious 3 car garage, finished with white steel, that accommodates larger vehicles. Other features include a backup furnace and central air, water softener, spacious primary bedroom with fireplace, private bathroom featuring 2 sinks, large whirlpool/shower combo, and large walk-in closet, separate laundry room with ½ bath and all 3 bedrooms and garage are wired for cable TV. For your weekend barbecues, there is a 18x22 poured concrete off the dining room and also camper hookups for family and friends. With a great location of this property to the Heartland Trail, lakes, golf, ATV and snowmobile trails, snowshoeing and fishing makes it so appealing. If you value privacy and a close connection to nature, but still enjoy the amenities of small town living in northern Minnesota, this is what you've been looking for! Call today for your personal showing!

Additional Details:

Year Built	2023
Lot Acres	3.9
Lot Dimensions	354x449
Garage Stalls	3
School District	309
Taxes	\$2,515
Taxes with Assessments	\$2,736
Tax Year	2025

Additional Features:

Basement: None **Fuel:** Electric, Propane **Garage:** 3 **Heat:** Fireplace(s), Radiant Floor **Sewer:** Private Sewer, Septic System Compliant - Yes, Tank with Drainage Field **Water:** Drilled, Private **Air Conditioning:** Central Air

Driving Directions:

From 34/71 in Park Rapids, go East on State 34 to County 4 turn left on Eclipse Dr. Call to Affinity Real Estate for our sign.



Listed By:
Affinity Real Estate Inc.

Affinity Real Estate Inc. participates in the Regional Multiple Listing Service of Minnesota, Inc Broker Reciprocity (sm) program, allowing us to display other broker's listings on our website. All properties are subject to prior sale, change or withdrawal.



Call Affinity Real Estate

218-237-3333

info@affinityrealestate.com



Affinity Real Estate - 600 Park Avenue South - Park Rapids MN 56470



website: www.AffinityRealEstate.com | email: info@affinityrealestate.com | office: 218-237-3333 | fax: 218-237-3377

Affinity
REAL ESTATE INC

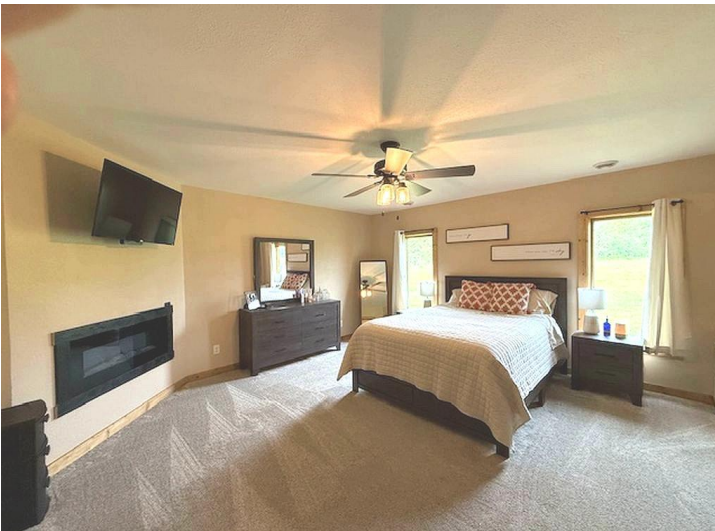
\$399,900
MLS 6738870 Residential
16696 Eclipse Drive
Park Rapids MN 56470



website: www.AffinityRealEstate.com | email: info@affinityrealestate.com | office: 218-237-3333 | fax: 218-237-3377



\$399,900
 MLS 6738870 Residential
 16696 Eclipse Drive
 Park Rapids MN 56470



website: www.AffinityRealEstate.com | email: info@affinityrealestate.com | office: 218-237-3333 | fax: 218-237-3377

Affinity
REAL ESTATE INC

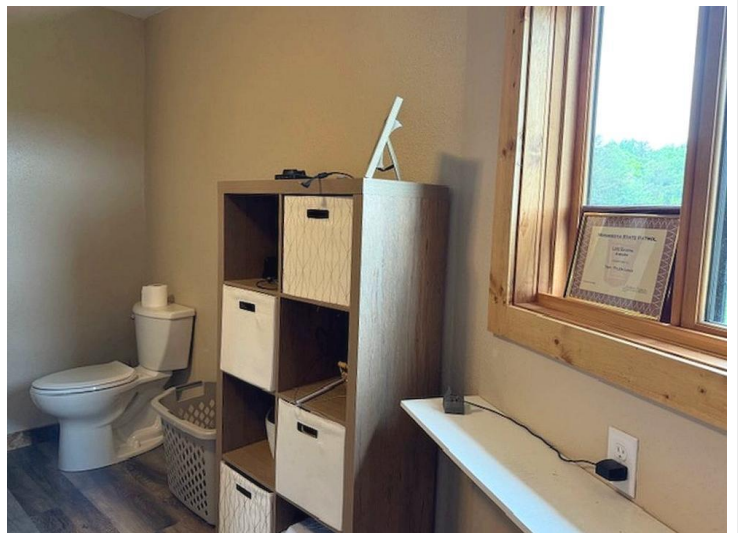
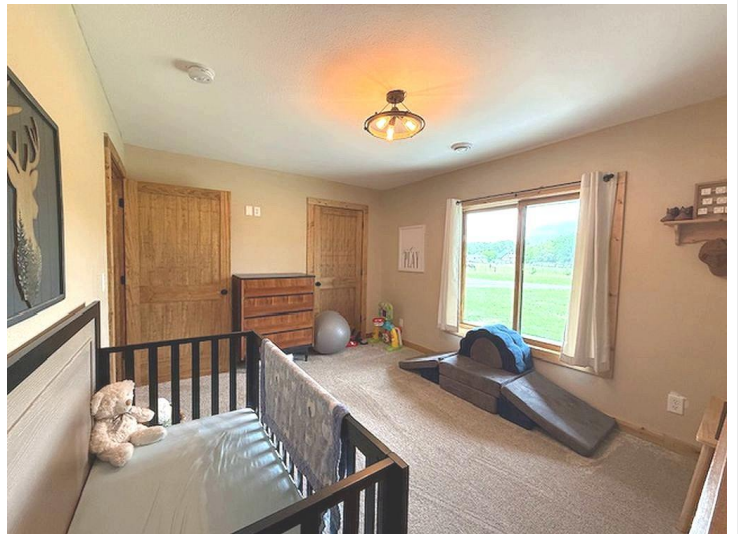
\$399,900
MLS 6738870 Residential
16696 Eclipse Drive
Park Rapids MN 56470



website: www.AffinityRealEstate.com | email: info@affinityrealestate.com | office: 218-237-3333 | fax: 218-237-3377



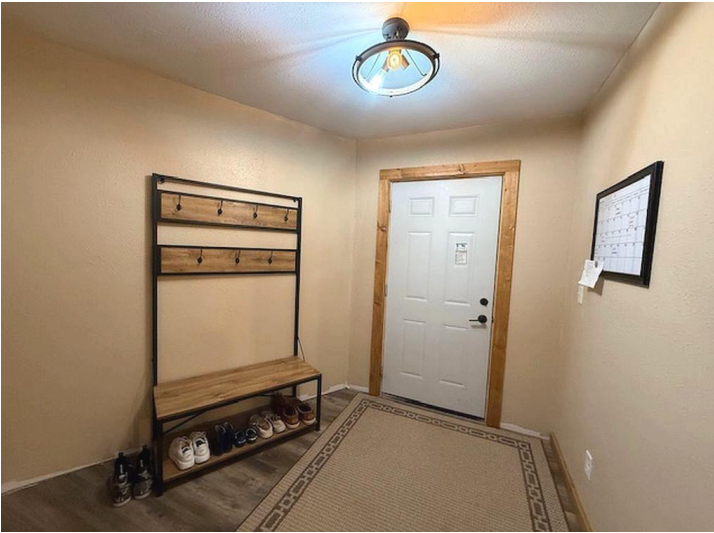
\$399,900
MLS 6738870 Residential
16696 Eclipse Drive
Park Rapids MN 56470



website: www.AffinityRealEstate.com | email: info@affinityrealestate.com | office: 218-237-3333 | fax: 218-237-3377

Affinity
REAL ESTATE INC

\$399,900
MLS 6738870 Residential
16696 Eclipse Drive
Park Rapids MN 56470



website: www.AffinityRealEstate.com | email: info@affinityrealestate.com | office: 218-237-3333 | fax: 218-237-3377

Affinity
REAL ESTATE INC

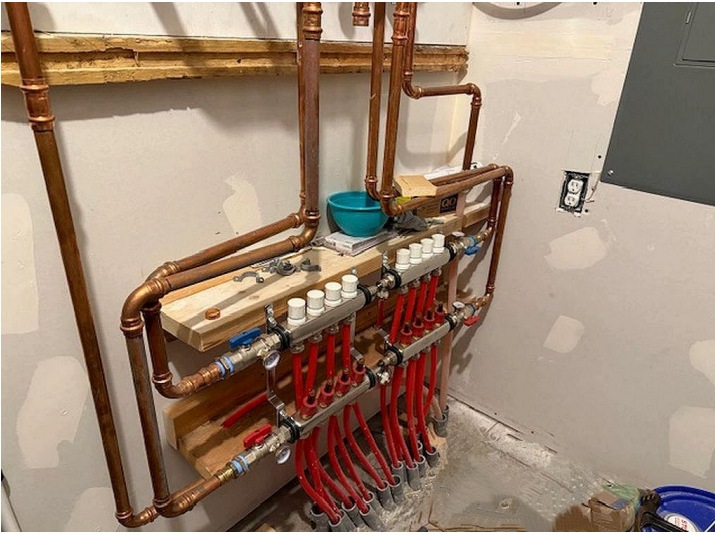
\$399,900
MLS 6738870 Residential
16696 Eclipse Drive
Park Rapids MN 56470



website: www.AffinityRealEstate.com | email: info@affinityrealestate.com | office: 218-237-3333 | fax: 218-237-3377



\$399,900
 MLS 6738870 Residential
 16696 Eclipse Drive
 Park Rapids MN 56470



website: www.AffinityRealEstate.com | email: info@affinityrealestate.com | office: 218-237-3333 | fax: 218-237-3377



\$399,900
MLS 6738870 Residential
16696 Eclipse Drive
Park Rapids MN 56470