



MLS 6739193 Residential

\$140,000

1,110 sq ft
2 bedrooms
1 baths

708 Chief Boyd Drive
Cass Lake MN 56633

Status: Active

Description:

Tucked into the woods on nearly 5 private acres, this partially finished home offers a unique opportunity to create your dream space near Buck Lake and the Cass Lake Chain. Located just minutes from public land and the Chippewa National Forest, outdoor adventure is always close by.

The groundwork is done: a 30x60 slab-on-grade structure has been built and sided, with windows installed and interior framing in place for a 2-bedroom, 1-bathroom, laundry room main floor layout. One bedroom is nearly complete, and the bathroom is partially finished. Special-order trusses from Grizzly Truss allow for an expansive upper level with approximately 1,100 sq ft of additional space just waiting for your vision.


The 23x30 attached garage is a standout feature—finished and heated with propane, it includes an overhead door, opener, and an automobile lift that's ready for use. Electrical is roughed in throughout the home, and the utility room is outfitted with a pressure tank and water heater, connected to a deep 4" well drilled by Antlers Well Drilling (125 ft deep).

A long, private driveway is already in, with much of the site cleared and ready for further development. Whether you're looking for a cabin getaway or a year-round home base, this versatile property is full of potential in a beautiful, wooded setting.

Additional Details:

Year Built	2023
Lot Acres	4.93
Lot Dimensions	652x328
Garage Stalls	2
School District	31
Taxes	\$322
Taxes with Assessments	\$322
Tax Year	2023

Additional Features:



Other Listed By:
Headwaters Realty Services LLC

Turn left onto US-2 W
1.8 mi
Turn right onto 69th Ave NW
2.0 mi



Call Affinity Real Estate
218-237-3333
info@affinityrealestate.com



Affinity Real Estate - 600 Park Avenue South - Park Rapids MN 56470

Continue onto Roosevelt Rd SE

Turn right onto Great River Rd/Mission Rd SE
4.8 mi



website: www.AffinityRealEstate.com | email: info@affinityrealestate.com | office: 218-237-3333 | fax: 218-237-3377



\$140,000
 MLS 6739193 Residential
 708 Chief Boyd Drive
 Cass Lake MN 56633



website: www.AffinityRealEstate.com | email: info@affinityrealestate.com | office: 218-237-3333 | fax: 218-237-3377

Affinity
REAL ESTATE INC

\$140,000
MLS 6739193 Residential
708 Chief Boyd Drive
Cass Lake MN 56633



website: www.AffinityRealEstate.com | email: info@affinityrealestate.com | office: 218-237-3333 | fax: 218-237-3377



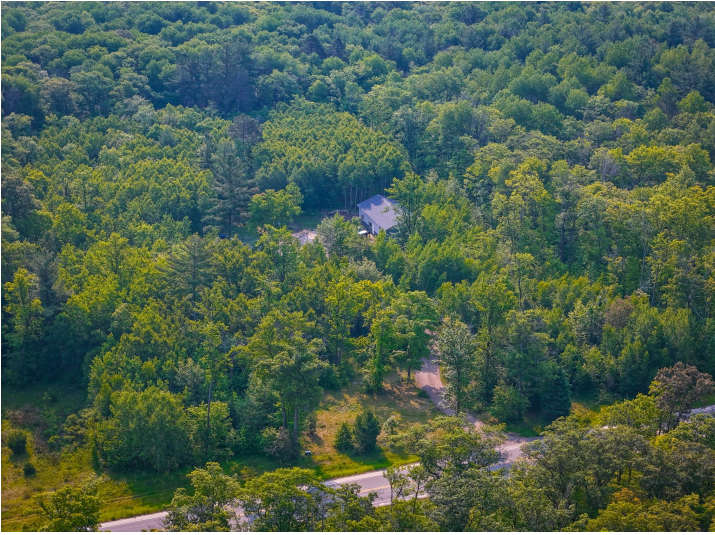
\$140,000
 MLS 6739193 Residential
 708 Chief Boyd Drive
 Cass Lake MN 56633



website: www.AffinityRealEstate.com | email: info@affinityrealestate.com | office: 218-237-3333 | fax: 218-237-3377



\$140,000
 MLS 6739193 Residential
 708 Chief Boyd Drive
 Cass Lake MN 56633



website: www.AffinityRealEstate.com | email: info@affinityrealestate.com | office: 218-237-3333 | fax: 218-237-3377



\$140,000
 MLS 6739193 Residential
 708 Chief Boyd Drive
 Cass Lake MN 56633



website: www.AffinityRealEstate.com | email: info@affinityrealestate.com | office: 218-237-3333 | fax: 218-237-3377



\$140,000
 MLS 6739193 Residential
 708 Chief Boyd Drive
 Cass Lake MN 56633