



MLS 6739390 Lake Home

\$275,000

1,472 sq ft
2 bedrooms
1 baths

2170 County 5
Hackensack MN 56452

Waterfront: Lost Lake (Woodrow
Twp.)

Status: Active

Description:

This remarkable property offers a blend of privacy, space, and stunning natural beauty. With over 700 feet of shoreline and more than 10 acres of land, you'll find plenty of room to explore, relax, and enjoy the peaceful Up North lifestyle. Tucked among the trees, the cabin provides a warm and rustic getaway, thoughtfully accented with reclaimed materials. The lakeside deck is great for soaking in the views. The main level features a cozy living room with a wood-burning fireplace, a bright kitchen with a dining area, and a versatile attached space, which is great for a home office or reading nook. There is also a bedroom, full bathroom, and convenient laundry room. Upstairs, there's a private bedroom with a sitting area and a large bonus space ideal for a walk-in closet, nursery, or craft room. Whether you dream of building a lake home, developing a private family retreat, or simply enjoying the space and serenity as it is, the potential here is exceptional. Lost Lake connects to Kid Lake, expanding your options for fishing, boating, and year-round fun. Properties with this much shoreline and acreage are rare; don't miss your chance to create something truly special.

Additional Details:

Year Built	1957
Lot Acres	10.42
Lot Dimensions	1044x250x250x405x811x252x250
Garage Stalls	2
School District	113
Taxes	\$770
Taxes with Assessments	\$836
Tax Year	2025

Additional Features:

Basement: Other **Fuel:** Propane, Wood **Garage:** 2 **Heat:** Forced Air, Fireplace(s) **Sewer:** Tank with Drainage Field **Water:** Sand Point **Air Conditioning:** None

Driving Directions:

From Longville - Head West on Co Rd 5 NW for 12 miles. Turn right onto subject property.



Listed By:
Heartland Real Estate

Affinity Real Estate Inc. participates in the Regional Multiple Listing Service of Minnesota, Inc Broker Reciprocity (sm) program, allowing us to display other broker's listings on our website. All properties are subject to prior sale, change or withdrawal.



Call Affinity Real Estate

218-237-3333

info@affinityrealestate.com



Affinity Real Estate - 600 Park Avenue South - Park Rapids MN 56470



website: www.AffinityRealEstate.com | email: info@affinityrealestate.com | office: 218-237-3333 | fax: 218-237-3377

Affinity
REAL ESTATE INC

\$275,000
MLS 6739390 Lake Home
2170 County 5
Hackensack MN 56452



website: www.AffinityRealEstate.com | email: info@affinityrealestate.com | office: 218-237-3333 | fax: 218-237-3377



\$275,000
 MLS 6739390 Lake Home
 2170 County 5
 Hackensack MN 56452



website: www.AffinityRealEstate.com | email: info@affinityrealestate.com | office: 218-237-3333 | fax: 218-237-3377



\$275,000
 MLS 6739390 Lake Home
 2170 County 5
 Hackensack MN 56452



website: www.AffinityRealEstate.com | email: info@affinityrealestate.com | office: 218-237-3333 | fax: 218-237-3377

Affinity
REAL ESTATE INC

\$275,000
MLS 6739390 Lake Home
2170 County 5
Hackensack MN 56452



website: www.AffinityRealEstate.com | email: info@affinityrealestate.com | office: 218-237-3333 | fax: 218-237-3377

Affinity
REAL ESTATE INC

\$275,000
MLS 6739390 Lake Home
2170 County 5
Hackensack MN 56452



website: www.AffinityRealEstate.com | email: info@affinityrealestate.com | office: 218-237-3333 | fax: 218-237-3377

Affinity
REAL ESTATE INC

\$275,000
MLS 6739390 Lake Home
2170 County 5
Hackensack MN 56452



website: www.AffinityRealEstate.com | email: info@affinityrealestate.com | office: 218-237-3333 | fax: 218-237-3377



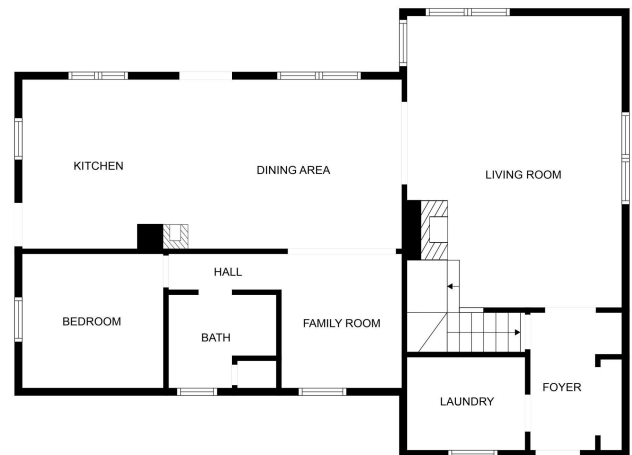
\$275,000
 MLS 6739390 Lake Home
 2170 County 5
 Hackensack MN 56452



website: www.AffinityRealEstate.com | email: info@affinityrealestate.com | office: 218-237-3333 | fax: 218-237-3377



\$275,000
 MLS 6739390 Lake Home
 2170 County 5
 Hackensack MN 56452

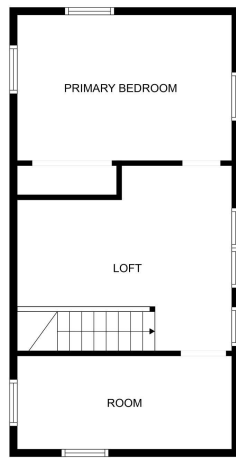


FLOOR PLAN CREATED BY CURBICASA APP. MEASUREMENTS DEEMED HIGHLY RELIABLE BUT NOT GUARANTEED.

website: www.AffinityRealEstate.com | email: info@affinityrealestate.com | office: 218-237-3333 | fax: 218-237-3377

Affinity
REAL ESTATE INC

\$275,000
MLS 6739390 Lake Home
2170 County 5
Hackensack MN 56452



FLOOR PLAN CREATED BY CUBICASA APP. MEASUREMENTS DEEMED HIGHLY RELIABLE BUT NOT GUARANTEED.



FLOOR PLAN CREATED BY CUBICASA APP. MEASUREMENTS DEEMED HIGHLY RELIABLE BUT NOT GUARANTEED.

website: www.AffinityRealEstate.com | email: info@affinityrealestate.com | office: 218-237-3333 | fax: 218-237-3377



\$275,000
 MLS 6739390 Lake Home
 2170 County 5
 Hackensack MN 56452