



MLS 6739503 Residential

\$195,900

1,073 sq ft
3 bedrooms
2 baths

19531 Explorer Trail
Park Rapids MN 56470

Status: Active

Description:

What a setting! Prime Location tucked away in the woods on a cul-de-sac. Great area near many lakes, and near most amenities. Home is in good shape with a new roof! Septic is compliant. Move in and enjoy!

Additional Details:

Year Built	1997
Lot Acres	1.04
Lot Dimensions	101x144x228x200
Garage Stalls	2
School District	309
Taxes	\$724
Taxes with Assessments	\$934
Tax Year	2024

Additional Features:

Basement: Crawl Space **Fuel:** Natural Gas **Garage:** 2 **Heat:** Forced Air **Sewer:** Private Sewer **Water:** Well **Air Conditioning:** Central Air

Driving Directions:

Explorer Trail to property.



Listed By:
RE/MAX Results - Longville

Affinity Real Estate Inc. participates in the Regional Multiple Listing Service of Minnesota, Inc Broker Reciprocity (sm) program, allowing us to display other broker's listings on our website. All properties are subject to prior sale, change or withdrawal.



Call Affinity Real Estate

218-237-3333

info@affinityrealestate.com



Affinity Real Estate - 600 Park Avenue South - Park Rapids MN 56470



website: www.AffinityRealEstate.com | email: info@affinityrealestate.com | office: 218-237-3333 | fax: 218-237-3377



\$195,900
 MLS 6739503 Residential
 19531 Explorer Trail
 Park Rapids MN 56470



website: www.AffinityRealEstate.com | email: info@affinityrealestate.com | office: 218-237-3333 | fax: 218-237-3377



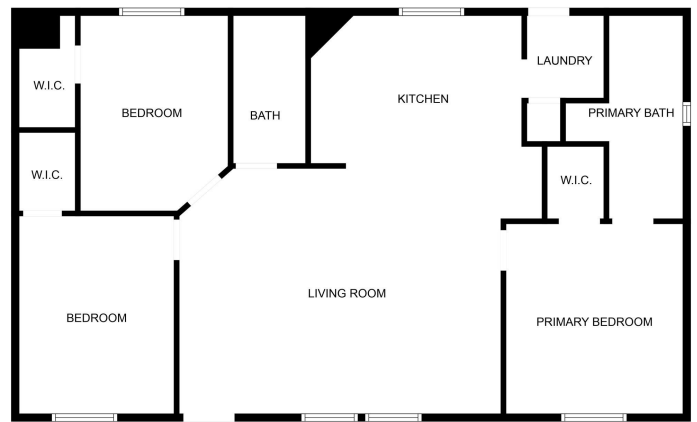
\$195,900
 MLS 6739503 Residential
 19531 Explorer Trail
 Park Rapids MN 56470



website: www.AffinityRealEstate.com | email: info@affinityrealestate.com | office: 218-237-3333 | fax: 218-237-3377



\$195,900
 MLS 6739503 Residential
 19531 Explorer Trail
 Park Rapids MN 56470



FLOOR PLAN CREATED BY CURBCASA APP. MEASUREMENTS DEEMED HIGHLY RELIABLE BUT NOT GUARANTEED.

website: www.AffinityRealEstate.com | email: info@affinityrealestate.com | office: 218-237-3333 | fax: 218-237-3377



\$195,900
 MLS 6739503 Residential
 19531 Explorer Trail
 Park Rapids MN 56470