



MLS 6739546 Residential

\$164,900

920 sq ft
2 bedrooms
1 baths

10091 Trengrove Road
Bemidji MN 56601

Status: Active

Description:

"Like New" 2-bedroom home just south of Wilton on an acre lot in the country! Totally remodeled home! New in 2025: roof, siding, windows, kitchen, bathroom, sheetrock, flooring, water heater, and front deck! Home includes a 12' x 12' storage shed along with a carport storage building! Nice rural atmosphere, but very convenient to Bemidji!

Additional Details:

Year Built	1968
Lot Acres	1.01
Lot Dimensions	210x210
School District	31
Taxes	\$544
Taxes with Assessments	\$544
Tax Year	2025

Additional Features:

Basement: Block, Partial, Sump Pump **Fuel:** Electric, Propane **Heat:** Baseboard, Forced Air **Sewer:** Private Sewer **Water:** Private **Air Conditioning:** None

Driving Directions:

From Hwy #2 in Wilton, south on County #14 and follow for approximately 2.5 miles, right on Trengrove for 1/2 mile, home is on the right.



Listed By:
Realty Experts, LLC

Affinity Real Estate Inc. participates in the Regional Multiple Listing Service of Minnesota, Inc Broker Reciprocity (sm) program, allowing us to display other broker's listings on our website. All properties are subject to prior sale, change or withdrawal.



Call Affinity Real Estate

218-237-3333

info@affinityrealestate.com



Affinity Real Estate - 600 Park Avenue South - Park Rapids MN 56470



website: www.AffinityRealEstate.com | email: info@affinityrealestate.com | office: 218-237-3333 | fax: 218-237-3377



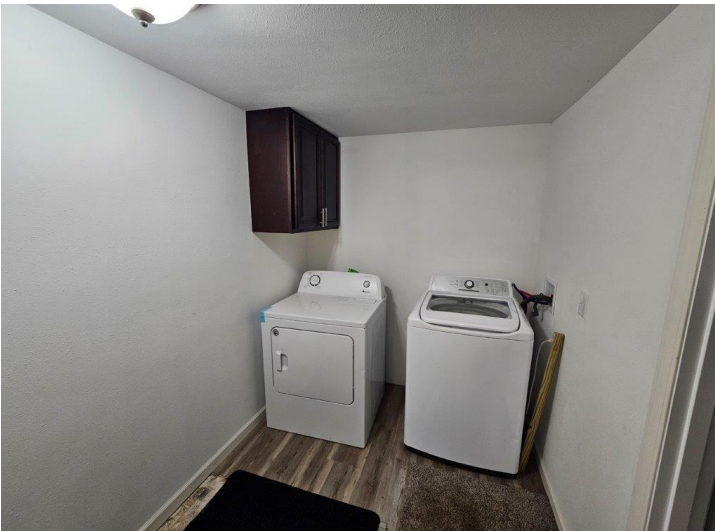
\$164,900
 MLS 6739546 Residential
 10091 Trengove Road
 Bemidji MN 56601



website: www.AffinityRealEstate.com | email: info@affinityrealestate.com | office: 218-237-3333 | fax: 218-237-3377



\$164,900
 MLS 6739546 Residential
 10091 Trengove Road
 Bemidji MN 56601



website: www.AffinityRealEstate.com | email: info@affinityrealestate.com | office: 218-237-3333 | fax: 218-237-3377



\$164,900
 MLS 6739546 Residential
 10091 Trengove Road
 Bemidji MN 56601



website: www.AffinityRealEstate.com | email: info@affinityrealestate.com | office: 218-237-3333 | fax: 218-237-3377



\$164,900
MLS 6739546 Residential
10091 Trengove Road
Bemidji MN 56601