



MLS 6739638 Lake Land

\$246,884

Description:

Rare .74 acre undeveloped wooded LAKESHORE lot on Roosevelt Lake! Wooded, level and sloped lot has a commanding view overlooking prestigious & coveted Woods Bay. Property has over 100 feet of Woods Bay LAKESHORE! This beautiful land is only about 2 miles from Outing. Perfect for a walkout home or cabin. Lots like this one are truly rare on any lake, especially rare on this lake, but extremely rare on Woods Bay! 1500+ acre Roosevelt Lake also connects to Lawrence Lake for a total of 1744 acres!

Roosevelt & Lawrence Lakes offer great fishing (especially for big Walleye, Northern Pike, and Large Crappies. Muskies are now stocked in the lake by the DNR).

Property includes an outhouse, and bunkhouse/shed. Utilities are available near the property and road, including power, and fiber optic cable.

THIS WON'T LAST LONG SO MAKE PLANS TO SEE IT SOON!

For a series of 21 interactive, 360-degree photos, taken on and near this property, contact the listing agent.

Additional Details:

Lot Acres	0.75
Lot Dimensions	110 x 250 x 100 x 66+266 (irregular shape)
School District	118
Taxes	\$624
Taxes with Assessments	\$624
Tax Year	2023

Additional Features:

Driving Directions:

From Outing, turn west (between mile-markers 38 & 39) on Woods Bay Dr. NE for a distance of 2.1 miles to address
 Listed By: RES Realty



Affinity Real Estate Inc. participates in the Regional Multiple Listing Service of Minnesota, Inc Broker Reciprocity (sm) program, allowing us to display other broker's listings on our website. All properties are subject to prior sale, change or withdrawal.



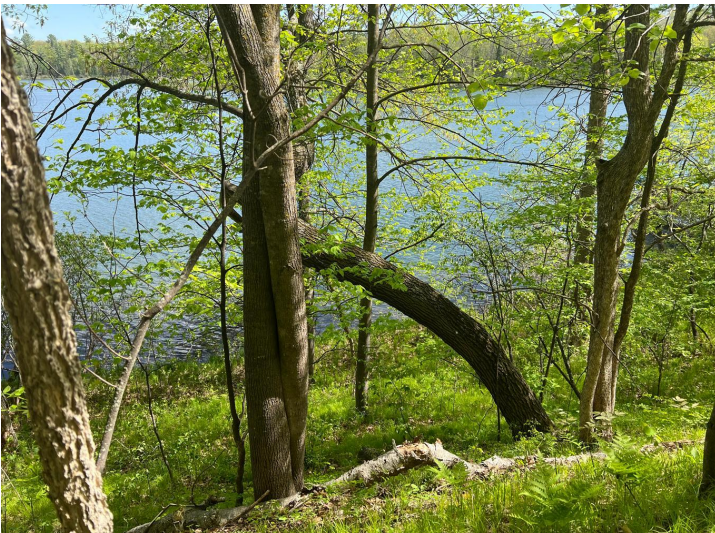
Call Affinity Real Estate

218-237-3333

info@affinityrealestate.com



Affinity Real Estate - 600 Park Avenue South - Park Rapids MN 56470



website: www.AffinityRealEstate.com | email: info@affinityrealestate.com | office: 218-237-3333 | fax: 218-237-3377

Affinity
REAL ESTATE INC

\$246,884

MLS 6739638 Lake Land
5585 Woods Bay Drive
Outing MN 56662



website: www.AffinityRealEstate.com | email: info@affinityrealestate.com | office: 218-237-3333 | fax: 218-237-3377



\$246,884
 MLS 6739638 Lake Land
 5585 Woods Bay Drive
 Outing MN 56662



website: www.AffinityRealEstate.com | email: info@affinityrealestate.com | office: 218-237-3333 | fax: 218-237-3377



\$246,884
 MLS 6739638 Lake Land
 5585 Woods Bay Drive
 Outing MN 56662



website: www.AffinityRealEstate.com | email: info@affinityrealestate.com | office: 218-237-3333 | fax: 218-237-3377



\$246,884
MLS 6739638 Lake Land
5585 Woods Bay Drive
Outing MN 56662



website: www.AffinityRealEstate.com | email: info@affinityrealestate.com | office: 218-237-3333 | fax: 218-237-3377

Affinity
REAL ESTATE INC

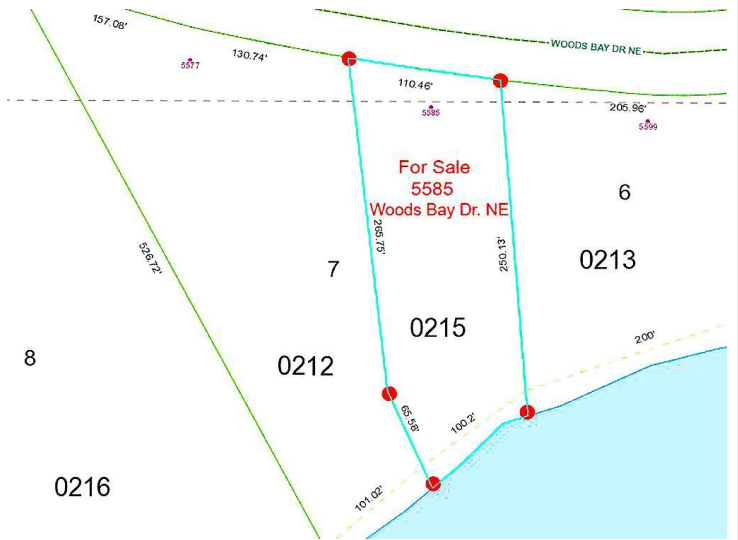
\$246,884
MLS 6739638 Lake Land
5585 Woods Bay Drive
Outing MN 56662



website: www.AffinityRealEstate.com | email: info@affinityrealestate.com | office: 218-237-3333 | fax: 218-237-3377



\$246,884
 MLS 6739638 Lake Land
 5585 Woods Bay Drive
 Outing MN 56662



website: www.AffinityRealEstate.com | email: info@affinityrealestate.com | office: 218-237-3333 | fax: 218-237-3377



\$246,884
 MLS 6739638 Lake Land
 5585 Woods Bay Drive
 Outing MN 56662