



MLS 6739823 Lake Land

\$159,000

Description:

Build your dream lake home on the peaceful shores of Mayo Lake, a rare gem with private access only—offering tranquility, great fishing, and recreational enjoyment without the crowds.

This beautiful lot features:

100 feet of shoreline with a gentle slope—ideal for a walkout home

Private access to maintain a quiet, serene lake experience

A rare opportunity, as properties on Mayo Lake seldom become available. Survey to be completed by the end of August.

Channel access to Sibley Lake, expanding your water adventures

Perfectly located near everything the Pequot Lakes, Breezy Point, and Nisswa area has to offer, you're never far from shopping, dining, and year-round activities.

If you're seeking a quiet up-north retreat with stunning lake views and excellent build potential, this is the lot you've been waiting for. Don't miss out—opportunities like this are few and far between!

Additional Details:

Lot Acres	0.68
Lot Dimensions	100x322x116x276
School District	186
Taxes	\$1,086
Taxes with Assessments	\$1,086
Tax Year	2024

Additional Features:



Listed By:
North Pointe Realty Advantage

Affinity Real Estate Inc. participates in the Realtor® Multiple Listing Service of Minnesota, Inc Broker Reciprocity (sm) program, allowing us to display other broker's listings on our website. All properties are subject to prior sale, change or withdrawal.



Call Affinity Real Estate

218-237-3333

info@affinityrealestate.com



Affinity Real Estate - 600 Park Avenue South - Park Rapids MN 56470

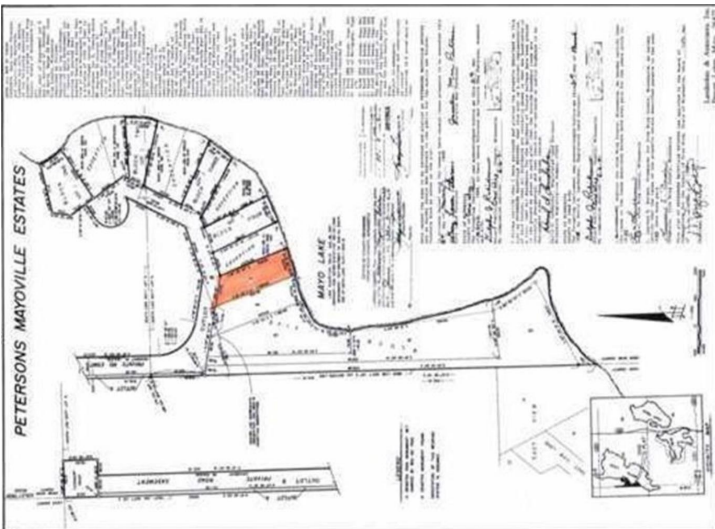


6/16/25, 2:25 PM [_ags_790be457-4ae7-110b-9e1a-005056b1839c.png \(1.587...11.23\)](#)



https://gis.crowwing.com/c_external_main/rest/directories/regionspec/Utilities/PrintingTools_CIPServer/_ags_790be457-4ae7-110b-9e1a-005056b1839c.png

1/3



website: www.AffinityRealEstate.com | email: info@affinityrealestate.com | office: 218-237-3333 | fax: 218-237-3377

Affinity
REAL ESTATE INC

\$159,000
MLS 6739823 Lake Land
TBD Sluetter Road
Pequot Lakes MN 56472

website: www.AffinityRealEstate.com | email: info@affinityrealestate.com | office: 218-237-3333 | fax: 218-237-3377



\$159,000

MLS 6739823 Lake Land
TBD Sluetter Road
Pequot Lakes MN 56472

website: www.AffinityRealEstate.com | email: info@affinityrealestate.com | office: 218-237-3333 | fax:218-237-3377



\$159,000

MLS 6739823 Lake Land
TBD Sluetter Road
Pequot Lakes MN 56472