



MLS 6739888 Lake Home

**\$975,000**

1,599 sq ft  
2 bedrooms  
2 baths

886 Shore Drive  
Detroit Lakes MN 56501

Waterfront: Detroit

Status: Active

**Description:**

Discover the epitome of lakeside luxury on the coveted South Shore of Big Detroit Lake! This exceptional property boasts 125.7 feet of pristine lake frontage on a premium, level lot enveloped in serene, secluded surroundings—perfect for realizing your ultimate lake life vision.

Step into this charming, year-round retreat: a beautifully updated Rambler-style single-family home offering effortless main-floor living. With 2 spacious bedrooms and 2 modern bathrooms, the open layout features a vaulted living room that frames breathtaking panoramic views of the shimmering water. A versatile flex space, efficient galley kitchen, generous dining area, and a 4-season sun-drenched vaulted sunroom—ideal as a second living or recreation area—creating an inviting, light-filled ambiance that's both airy and welcoming.


Outside, enjoy the hard-bottom sandy shoreline with rip-rap protection, an included private dock for easy water access, and a convenient 12'x8' storage shed. Adventure awaits with boat access to eight delightful restaurants and connections to nearby gems like Little Detroit Lake, Lake Sallie, Lake Melissa, and Deadshot Bay.

The attached, oversized two-stall garage includes a dedicated workshop and ample storage, while the peaceful, shaded lot ensures tranquility. Modern comforts abound with central air conditioning, gas forced-air heating, fresh updated flooring, and move-in-ready convenience.

Don't miss your chance to create cherished lake memories this summer—schedule a private tour today before this lakeside paradise is gone!

**Additional Details:**

Year Built	1949
Lot Acres	0.57
Lot Dimensions	125.7' Frontage- Irregular
Garage Stalls	2
School District	22
Taxes	\$8,010


 Listed By: **Berkshire Hathaway HomeServices Premier**  
 Property  
 Affinity Real Estate Inc. participates in the Regional Multiple Listing Service of Minnesota, Inc Broker Reciprocity (sm) program, allowing  
**Additional Features:**  
 Basement: Full, Block, Chalk, Spacious, Full Natural Site, Garage, 2 Heat  
 Call for more information or schedule a tour.



**Call Affinity Real Estate**  
**218-237-3333**  
**info@affinityrealestate.com**




 City Water/Connected **Air**

Affinity Real Estate - 600 Park Avenue South - Park Rapids MN 56470

**Driving Directions:**



website: [www.AffinityRealEstate.com](http://www.AffinityRealEstate.com) | email: [info@affinityrealestate.com](mailto:info@affinityrealestate.com) | office: 218-237-3333 | fax:218-237-3377

**Affinity**  
REAL ESTATE INC

**\$975,000**  
MLS 6739888 Lake Home  
886 Shore Drive  
Detroit Lakes MN 56501



website: [www.AffinityRealEstate.com](http://www.AffinityRealEstate.com) | email: [info@affinityrealestate.com](mailto:info@affinityrealestate.com) | office: 218-237-3333 | fax:218-237-3377

**Affinity**  
REAL ESTATE INC

**\$975,000**  
MLS 6739888 Lake Home  
886 Shore Drive  
Detroit Lakes MN 56501



website: [www.AffinityRealEstate.com](http://www.AffinityRealEstate.com) | email: [info@affinityrealestate.com](mailto:info@affinityrealestate.com) | office: 218-237-3333 | fax:218-237-3377



**\$975,000**  
MLS 6739888 Lake Home  
886 Shore Drive  
Detroit Lakes MN 56501



website: [www.AffinityRealEstate.com](http://www.AffinityRealEstate.com) | email: [info@affinityrealestate.com](mailto:info@affinityrealestate.com) | office: 218-237-3333 | fax:218-237-3377

**Affinity**  
REAL ESTATE INC

**\$975,000**  
MLS 6739888 Lake Home  
886 Shore Drive  
Detroit Lakes MN 56501



website: [www.AffinityRealEstate.com](http://www.AffinityRealEstate.com) | email: [info@affinityrealestate.com](mailto:info@affinityrealestate.com) | office: 218-237-3333 | fax: 218-237-3377

**Affinity**  
REAL ESTATE INC

**\$975,000**  
MLS 6739888 Lake Home  
886 Shore Drive  
Detroit Lakes MN 56501



website: [www.AffinityRealEstate.com](http://www.AffinityRealEstate.com) | email: [info@affinityrealestate.com](mailto:info@affinityrealestate.com) | office: 218-237-3333 | fax: 218-237-3377

**Affinity**  
REAL ESTATE INC

**\$975,000**  
MLS 6739888 Lake Home  
886 Shore Drive  
Detroit Lakes MN 56501



website: [www.AffinityRealEstate.com](http://www.AffinityRealEstate.com) | email: [info@affinityrealestate.com](mailto:info@affinityrealestate.com) | office: 218-237-3333 | fax: 218-237-3377

**Affinity**  
REAL ESTATE INC

**\$975,000**  
MLS 6739888 Lake Home  
886 Shore Drive  
Detroit Lakes MN 56501

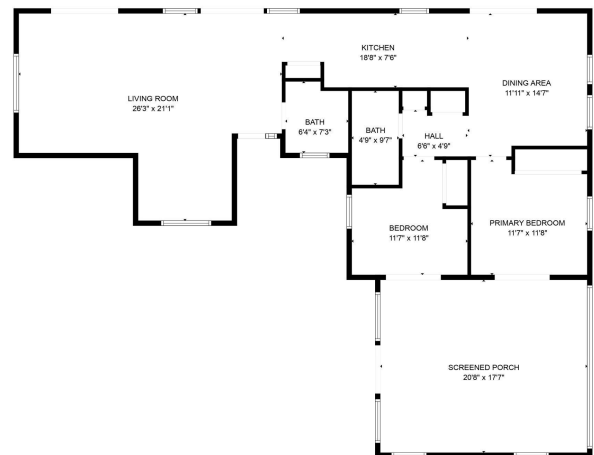
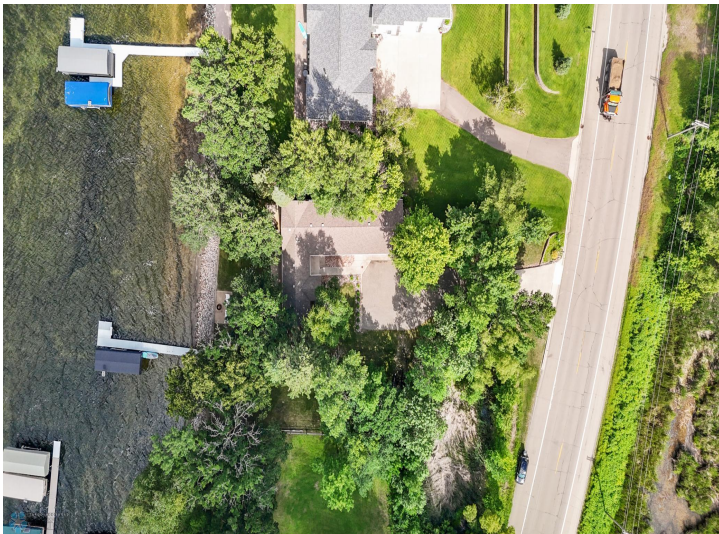




website: [www.AffinityRealEstate.com](http://www.AffinityRealEstate.com) | email: [info@affinityrealestate.com](mailto:info@affinityrealestate.com) | office: 218-237-3333 | fax:218-237-3377

**Affinity**  
REAL ESTATE INC

**\$975,000**  
MLS 6739888 Lake Home  
886 Shore Drive  
Detroit Lakes MN 56501



FLOOR PLAN CREATED BY CURBCASA APP. MEASUREMENTS DEEMED HIGHLY RELIABLE BUT NOT GUARANTEED.

website: [www.AffinityRealEstate.com](http://www.AffinityRealEstate.com) | email: [info@affinityrealestate.com](mailto:info@affinityrealestate.com) | office: 218-237-3333 | fax: 218-237-3377



**\$975,000**  
 MLS 6739888 Lake Home  
 886 Shore Drive  
 Detroit Lakes MN 56501