

MLS 6740196 Land

\$84,900

7.35 Acres

Raw Land

TBD Jeff Lake Road

Richville MN 56576

Status: Active

Description:

Beautiful 7.35-Acre Wooded Retreat – Ideal for Hunting or Your Dream Home!

Nestled just 2.5 miles from Richville and 5.5 miles from Ottertail—home of the renowned Thumper Pond Golf Course—this stunning 7.35-acre parcel offers the perfect blend of privacy and convenience. Currently enjoyed as prime hunting land, the property is teeming with wildlife, including deer, turkeys, grouse, and a variety of other woodland creatures.

With its peaceful natural setting, this land is also an exceptional site for building your dream home or cabin retreat. Enjoy nearby access to great dining, golf, and the charm of small-town living, all while being surrounded by nature.

Whether you're an outdoor enthusiast, hunter, or looking to create your own private getaway, schedule your showing today.

Additional Details:

Lot Acres	7.35
Lot Dimensions	660x487
School District	549
Taxes	\$346
Taxes with Assessments	\$346
Tax Year	2024

Additional Features:

Driving Directions:

From Richville south on Jeff Lake Road approximately 2.5 miles. Property on East side of Jeff Lake Road.



Listed By:
Boll Realty

Affinity Real Estate Inc. participates in the Regional Multiple Listing Service of Minnesota, Inc Broker Reciprocity (sm) program, allowing us to display other broker's listings on our website. All properties are subject to prior sale, change or withdrawal.



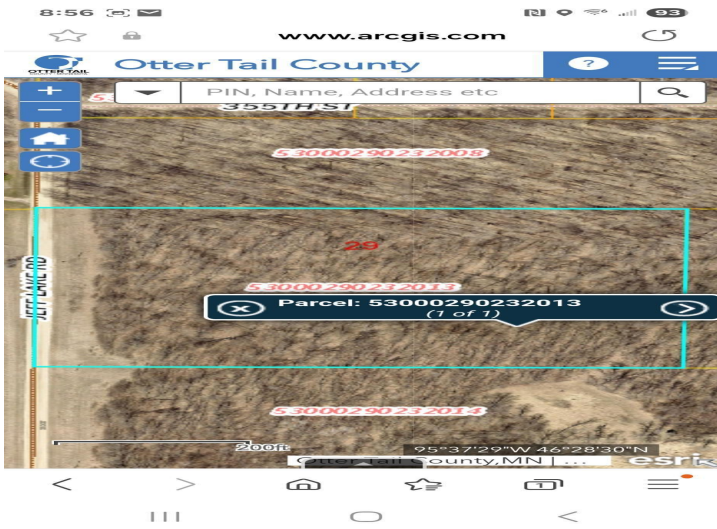
Call Affinity Real Estate

218-237-3333

info@affinityrealestate.com



Affinity Real Estate - 600 Park Avenue South - Park Rapids MN 56470



website: www.AffinityRealEstate.com | email: info@affinityrealestate.com | office: 218-237-3333 | fax: 218-237-3377



\$84,900

MLS 6740196 Land
TBD Jeff Lake Road
Richville MN 56576

website: www.AffinityRealEstate.com | email: info@affinityrealestate.com | office: 218-237-3333 | fax:218-237-3377



\$84,900

MLS 6740196 Land
TBD Jeff Lake Road
Richville MN 56576

website: www.AffinityRealEstate.com | email: info@affinityrealestate.com | office: 218-237-3333 | fax:218-237-3377



\$84,900

MLS 6740196 Land
TBD Jeff Lake Road
Richville MN 56576