



MLS 6740425 Lake Home

\$1,750,000

3,465 sq ft
4 bedrooms
4 baths

4217 Upper Roy Lake Road
Nisswa MN 56468

Waterfront: Roy

Status: Pending

Description:

This custom-crafted lake home is everything you've been waiting for! Perfectly perched on the shores of Roy Lake on the Gull Lake Chain, offering 143 feet of waterfront. From the moment you arrive, you're greeted by serene water views, towering pines, and timeless northwoods charm. Step inside and prepare to be wowed. The vaulted great room is truly the heart of the home and features an open-concept kitchen, dining room and living room, a dramatic floor-to-ceiling stone fireplace, rustic yellow pine flooring, and a wall of windows that perfectly frame the lake.

Love to cook and entertain? You'll swoon over the chef-inspired kitchen, complete with beautiful soapstone countertops, high-end stainless steel appliances, a massive center island with seating and 6-burner gas range, custom cabinetry, and a wide picture window that brings the outdoors in. This home offers 4 bedrooms and 4 baths, two of which are generously sized primary suites. 9 foot ceilings in the lower level give this walkout basement elevated luxury featuring a spacious living room with wet bar. The 3-stall detached garage is ideal for storing all your lake toys and gear. Outside is pure magic—tiered landscaping, vibrant perennials, a spacious lakeside patio, screened-in porch and a private dock. Soak in the sunrise or enjoy evening golden hour on the lakeside deck or around the firepit. Life here is all about making unforgettable memories. Located just minutes from downtown Nisswa by boat or car and part of the coveted Gull Lake Chain, this home delivers the perfect mix of privacy, luxury, and unbeatable access to everything the area has to offer. This is more than just a lake home—it's a lifestyle. Whether you're chasing peaceful mornings, lakeside laughter, or the perfect weekend escape, 4217 Upper Roy Lake Road delivers it all in style.

Additional Details:

Year Built	1995
Lot Acres	1.05
Lot Dimensions	143x465x121x435
Garage Stalls	3
School District	181
Taxes	\$10,013
Taxes with Assessments	\$10,038
Tax Year	2025

Additional Features:

Window(s): Finished, Full, Walkout Fuel: Electric, Natural Gas, Fireplace
Listed By: Id. Water: Drilled, Private Well Air Conditioning: Central
RE/MAX Results - Nisswa

Driving Real Estate
From now on, turn onto Upper Roy Lake Road, property on left.
Service of Minnesota, Inc. Broker Reciprocity (sm) program, allowing us to display other broker's listings on our website. All properties are subject to prior sale, change or withdrawal.



Call Affinity Real Estate
218-237-3333
info@affinityrealestate.com



Affinity Real Estate - 600 Park Avenue South - Park Rapids MN 56470



website: www.AffinityRealEstate.com | email: info@affinityrealestate.com | office: 218-237-3333 | fax: 218-237-3377

Affinity
REAL ESTATE INC

\$1,750,000

MLS 6740425 Lake Home
4217 Upper Roy Lake Road
Nisswa MN 56468



website: www.AffinityRealEstate.com | email: info@affinityrealestate.com | office: 218-237-3333 | fax: 218-237-3377

Affinity
REAL ESTATE INC

\$1,750,000
MLS 6740425 Lake Home
4217 Upper Roy Lake Road
Nisswa MN 56468

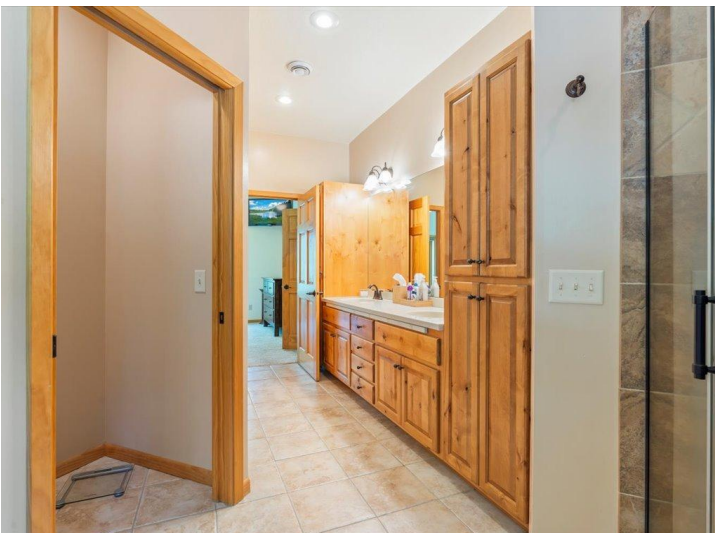


website: www.AffinityRealEstate.com | email: info@affinityrealestate.com | office: 218-237-3333 | fax: 218-237-3377

Affinity
REAL ESTATE INC

\$1,750,000

MLS 6740425 Lake Home
4217 Upper Roy Lake Road
Nisswa MN 56468



website: www.AffinityRealEstate.com | email: info@affinityrealestate.com | office: 218-237-3333 | fax: 218-237-3377

Affinity
REAL ESTATE INC

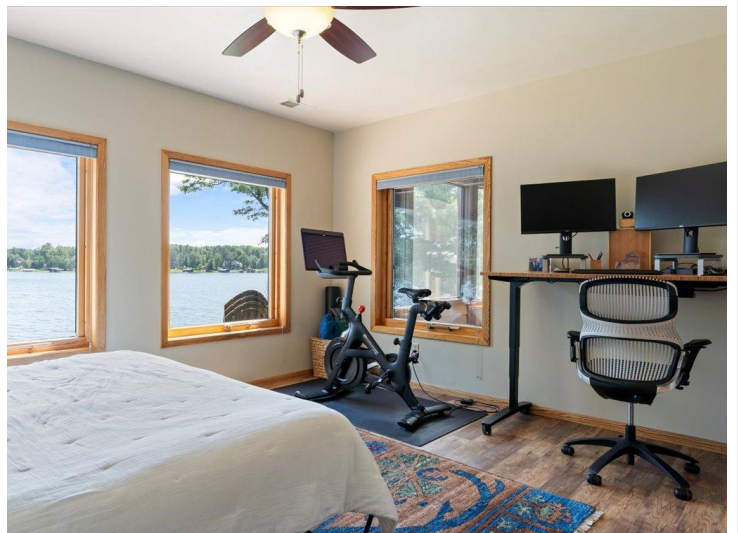
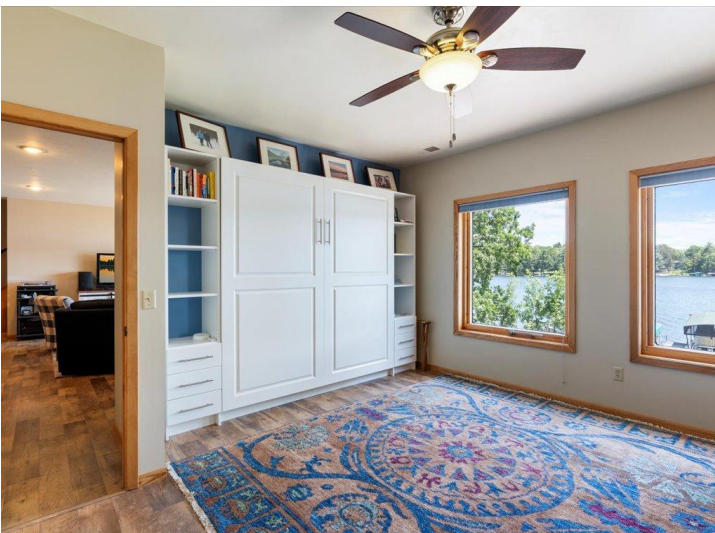
\$1,750,000
MLS 6740425 Lake Home
4217 Upper Roy Lake Road
Nisswa MN 56468



website: www.AffinityRealEstate.com | email: info@affinityrealestate.com | office: 218-237-3333 | fax: 218-237-3377

Affinity
REAL ESTATE INC

\$1,750,000
MLS 6740425 Lake Home
4217 Upper Roy Lake Road
Nisswa MN 56468



website: www.AffinityRealEstate.com | email: info@affinityrealestate.com | office: 218-237-3333 | fax: 218-237-3377

Affinity
REAL ESTATE INC

\$1,750,000
MLS 6740425 Lake Home
4217 Upper Roy Lake Road
Nisswa MN 56468



website: www.AffinityRealEstate.com | email: info@affinityrealestate.com | office: 218-237-3333 | fax: 218-237-3377

Affinity
REAL ESTATE INC

\$1,750,000
MLS 6740425 Lake Home
4217 Upper Roy Lake Road
Nisswa MN 56468



website: www.AffinityRealEstate.com | email: info@affinityrealestate.com | office: 218-237-3333 | fax: 218-237-3377



\$1,750,000

MLS 6740425 Lake Home
4217 Upper Roy Lake Road
Nisswa MN 56468



website: www.AffinityRealEstate.com | email: info@affinityrealestate.com | office: 218-237-3333 | fax: 218-237-3377



\$1,750,000

MLS 6740425 Lake Home
4217 Upper Roy Lake Road
Nisswa MN 56468