



MLS 6740432 Lake Home

**\$215,000**

960 sq ft  
2 bedrooms  
2 baths

44250 Posterity Beach Lane  
Waubun MN 56589

Waterfront: Pickerel Lake (Round  
Lake Twp.)

Status: Active

**Description:**

Lake homes with prices like this don't come around too often so if you have been searching for a year round lake cabin then search no more because this is it! This home is located on beautiful Pickerel Lake! A cabin with 2 beds and a detached garage with two additional rooms is a great place for extra company, work shop, man cave or all of the above! Crystal clear water with 13+ ft clarity is great for recreational fun or fishing. You are surrounded by an abundance of state land with miles of snowmobile/ATV trails, and great hunting opportunities. A perfect home for an outdoor lifestyle!

**Additional Details:**

Year Built	1997
Lot Acres	1
Lot Dimensions	75*560
Garage Stalls	2
School District	435
Taxes	\$1,416
Taxes with Assessments	\$1,416
Tax Year	2024

**Additional Features:**

**Fuel:** Propane **Heat:** Baseboard, Dual, Fireplace(s), Hot Water, Radiant Floor

**Driving Directions:**

Head northeast on Co Hwy 35, turn right onto MN-113 E. After 5.3 miles, Turn left toward Posterity Bch Ln. Continue straight on Posterity Bch Ln & the destination will be on your left.



Listed By:  
Jack Chivers Realty

Affinity Real Estate Inc. participates in the Regional Multiple Listing Service of Minnesota, Inc Broker Reciprocity (sm) program, allowing us to display other broker's listings on our website. All properties are subject to prior sale, change or withdrawal.



**Call Affinity Real Estate**

**218-237-3333**

**info@affinityrealestate.com**



**Affinity Real Estate - 600 Park Avenue South - Park Rapids MN 56470**





website: [www.AffinityRealEstate.com](http://www.AffinityRealEstate.com) | email: [info@affinityrealestate.com](mailto:info@affinityrealestate.com) | office: 218-237-3333 | fax: 218-237-3377

**Affinity**  
REAL ESTATE INC

**\$215,000**  
MLS 6740432 Lake Home  
44250 Posterity Beach Lane  
Waubun MN 56589





website: [www.AffinityRealEstate.com](http://www.AffinityRealEstate.com) | email: [info@affinityrealestate.com](mailto:info@affinityrealestate.com) | office: 218-237-3333 | fax: 218-237-3377



**\$215,000**  
 MLS 6740432 Lake Home  
 44250 Posterity Beach Lane  
 Waubun MN 56589



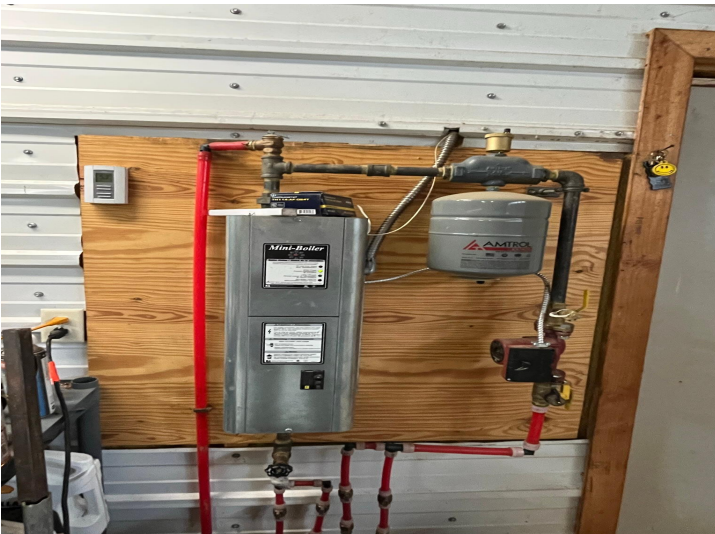
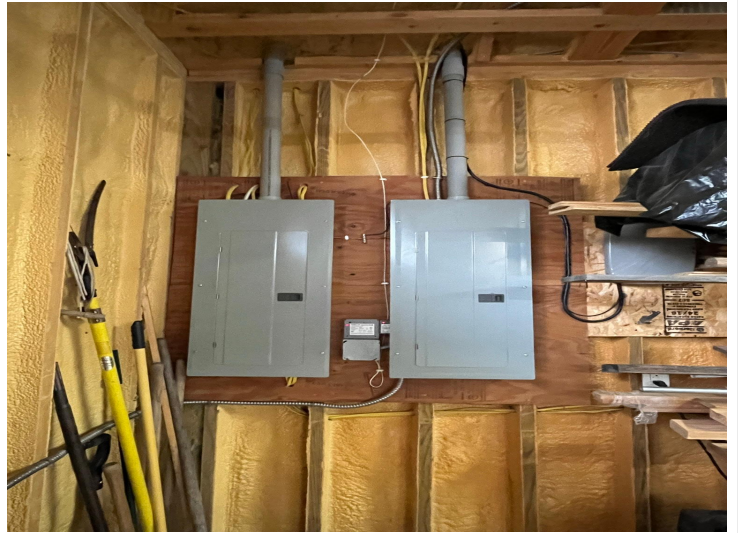


website: [www.AffinityRealEstate.com](http://www.AffinityRealEstate.com) | email: [info@affinityrealestate.com](mailto:info@affinityrealestate.com) | office: 218-237-3333 | fax: 218-237-3377

**Affinity**  
REAL ESTATE INC

**\$215,000**  
MLS 6740432 Lake Home  
44250 Posterity Beach Lane  
Waubun MN 56589



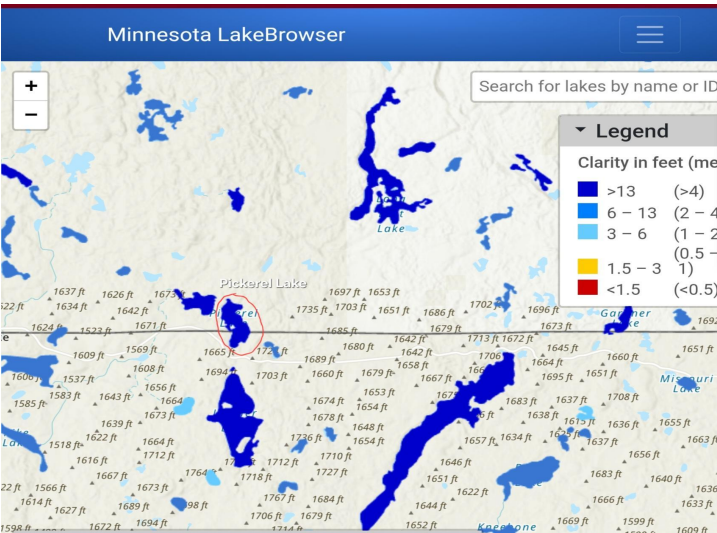
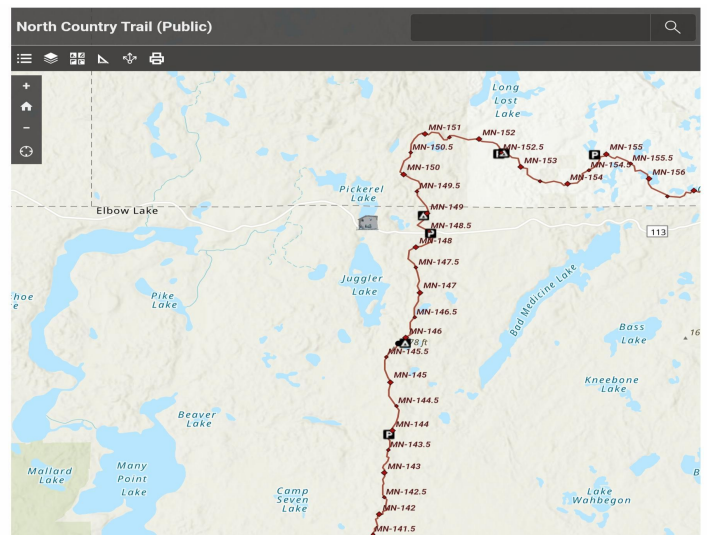


website: [www.AffinityRealEstate.com](http://www.AffinityRealEstate.com) | email: [info@affinityrealestate.com](mailto:info@affinityrealestate.com) | office: 218-237-3333 | fax: 218-237-3377



**\$215,000**  
 MLS 6740432 Lake Home  
 44250 Posterity Beach Lane  
 Waubun MN 56589





website: [www.AffinityRealEstate.com](http://www.AffinityRealEstate.com) | email: [info@affinityrealestate.com](mailto:info@affinityrealestate.com) | office: 218-237-3333 | fax: 218-237-3377



**\$215,000**  
 MLS 6740432 Lake Home  
 44250 Posterity Beach Lane  
 Waubun MN 56589