



MLS 6740434 Lake Land

**\$59,900**

**Description:**

Don't miss this 3.76 acre wooded lot, located across the street from the Mississippi River. Lot is located close to many executive homes and is on a tar road. Don't build until you've walked this lot.

**Additional Details:**

Lot Acres	3.76
Lot Dimensions	146x114x682x217x753
School District	181
Taxes	\$264
Taxes with Assessments	\$264
Tax Year	2024

**Additional Features:**

**Driving Directions:**

Take Cty Rd 3 North, turn Right on Executive Acres, to lot on Left.



Listed By:  
eXp Realty

Affinity Real Estate Inc. participates in the Regional Multiple Listing Service of Minnesota, Inc Broker Reciprocity (sm) program, allowing us to display other broker's listings on our website. All properties are subject to prior sale, change or withdrawal.



**Call Affinity Real Estate**

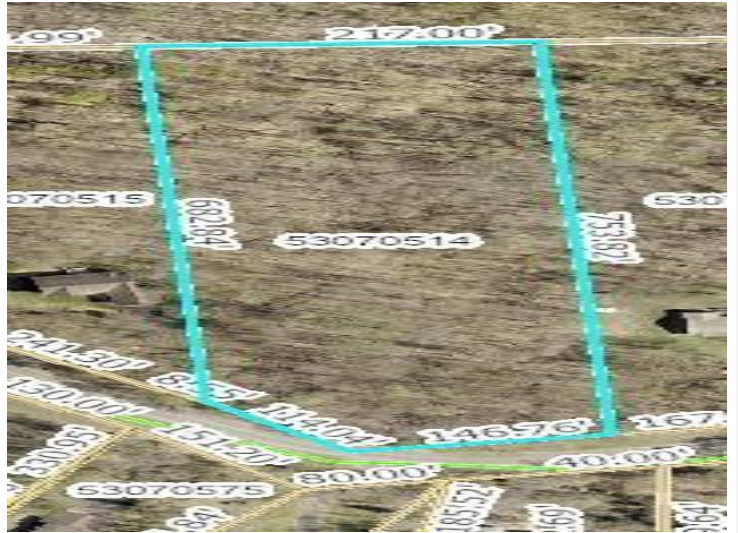
**218-237-3333**

**info@affinityrealestate.com**



**Affinity Real Estate - 600 Park Avenue South - Park Rapids MN 56470**





website: [www.AffinityRealEstate.com](http://www.AffinityRealEstate.com) | email: [info@affinityrealestate.com](mailto:info@affinityrealestate.com) | office: 218-237-3333 | fax: 218-237-3377



**\$59,900**  
 MLS 6740434 Lake Land  
 TBD Executive Acres Road  
 Brainerd MN 56401





website: [www.AffinityRealEstate.com](http://www.AffinityRealEstate.com) | email: [info@affinityrealestate.com](mailto:info@affinityrealestate.com) | office: 218-237-3333 | fax:218-237-3377



**\$59,900**

MLS 6740434 Lake Land  
TBD Executive Acres Road  
Brainerd MN 56401