



MLS 6740532 Commercial

\$349,000

516 6th Street
Brainerd MN 56401

Status: Active

Description:

Excellent opportunity to invest in a versatile multi-level office building in West Brainerd! Ideally situated between Brainerd and Baxter, this property offers convenient access to major amenities, area businesses, and high-traffic routes. The spacious layout is perfect for an owner-occupier or an investor looking to lease out space. A prime fit for any office-service business seeking affordable space in a strong, growing commercial corridor. Don't miss your chance to relocate or expand in this dynamic location!

Additional Details:

Year Built	1987
Lot Acres	0.41
Lot Dimensions	130' x 140'
School District	181
Taxes	\$6,416
Taxes with Assessments	\$6,416
Tax Year	2025

Additional Features:

Fuel: Propane **Heat:** Forced Air

Driving Directions:

From Hwy 210/371 intersection in Baxter - East on Hwy 210 (Washington St) approx. 1 1/4 miles - North on NW 6th St 1 1/2 blocks to the property on the East



Listed By:
Close-Converse Commercial Prop

Affinity Real Estate Inc. participates in the Regional Multiple Listing Service of Minnesota, Inc Broker Reciprocity (sm) program, allowing us to display other broker's listings on our website. All properties are subject to prior sale, change or withdrawal.



Call Affinity Real Estate

218-237-3333

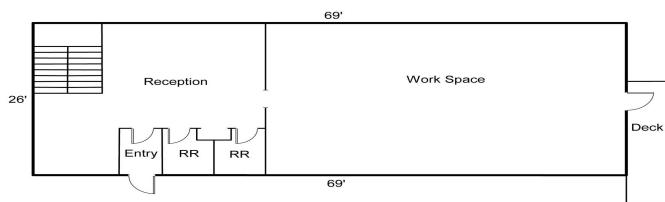
info@affinityrealestate.com



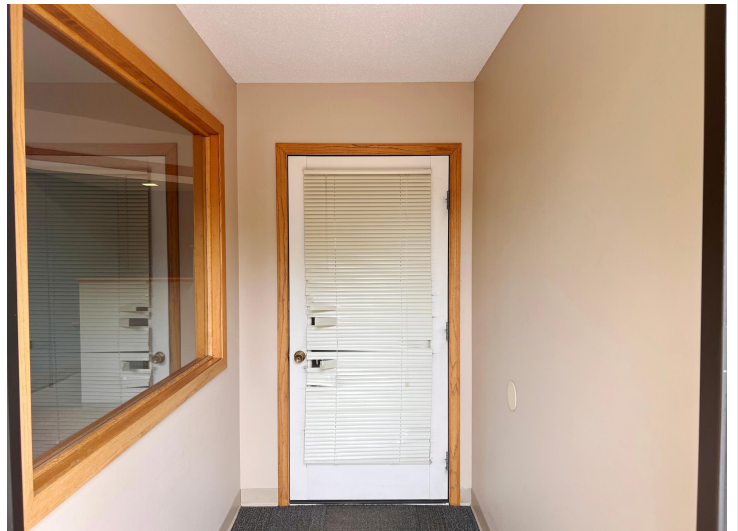
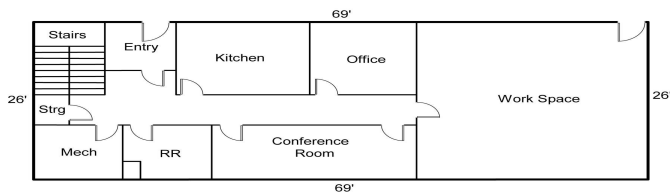
Affinity Real Estate - 600 Park Avenue South - Park Rapids MN 56470



Main Level



Lower Level



website: www.AffinityRealEstate.com | email: info@affinityrealestate.com | office: 218-237-3333 | fax: 218-237-3377



\$349,000
 MLS 6740532 Commercial
 516 6th Street
 Brainerd MN 56401



website: www.AffinityRealEstate.com | email: info@affinityrealestate.com | office: 218-237-3333 | fax: 218-237-3377



\$349,000
MLS 6740532 Commercial
516 6th Street
Brainerd MN 56401



website: www.AffinityRealEstate.com | email: info@affinityrealestate.com | office: 218-237-3333 | fax: 218-237-3377



\$349,000
MLS 6740532 Commercial
516 6th Street
Brainerd MN 56401



website: www.AffinityRealEstate.com | email: info@affinityrealestate.com | office: 218-237-3333 | fax: 218-237-3377



\$349,000
 MLS 6740532 Commercial
 516 6th Street
 Brainerd MN 56401



website: www.AffinityRealEstate.com | email: info@affinityrealestate.com | office: 218-237-3333 | fax:218-237-3377



\$349,000
MLS 6740532 Commercial
516 6th Street
Brainerd MN 56401