



MLS 6740982 Lake Land

\$100,000

Description:

This quiet lot on dead end road is waiting for new home to be nestled in the woods over looking the 14th fairway. Have the best of both worlds! Golf course living on the Prestigious Deacon's Lodge Golf Course and a shared lake access lot on the Pelican Lake. Your lake access lot is just down the road.. Come take a look before it's gone....

Additional Details:

Lot Acres	0.93
Lot Dimensions	227.2x172x227.3x182.6
School District	186
Taxes	\$550
Taxes with Assessments	\$550
Tax Year	2025

Additional Features:

Driving Directions:

Directions: From the Breezy Point gates, go north on Cty Rd 11 towards Crosslake for approx. 3 miles to a right on Cree Bay Circle to Right on Dog Leg to end of road.



Listed By:
Dane Arthur Real Estate Agency-Crosslake

Affinity Real Estate Inc. participates in the Regional Multiple Listing Service of Minnesota, Inc Broker Reciprocity (sm) program, allowing us to display other broker's listings on our website. All properties are subject to prior sale, change or withdrawal.



Call Affinity Real Estate

218-237-3333

info@affinityrealestate.com



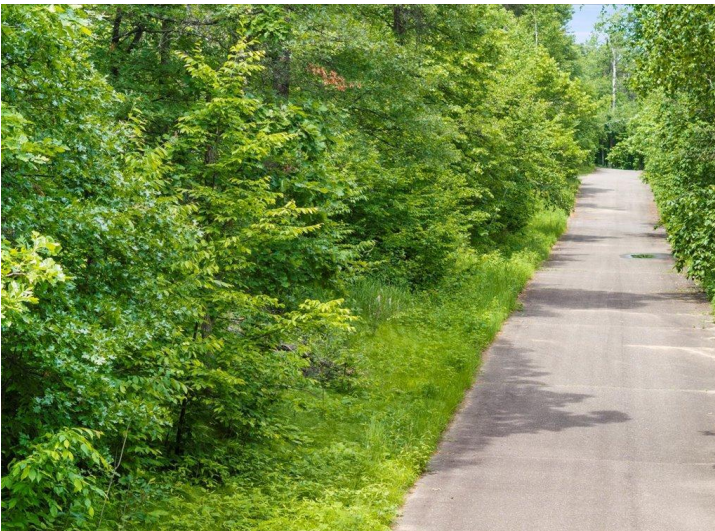
Affinity Real Estate - 600 Park Avenue South - Park Rapids MN 56470



website: www.AffinityRealEstate.com | email: info@affinityrealestate.com | office: 218-237-3333 | fax: 218-237-3377



\$100,000
 MLS 6740982 Lake Land
 TBD Dog Leg
 Pequot Lakes MN 56472



website: www.AffinityRealEstate.com | email: info@affinityrealestate.com | office: 218-237-3333 | fax: 218-237-3377



\$100,000
 MLS 6740982 Lake Land
 TBD Dog Leg
 Pequot Lakes MN 56472