



MLS 6741616 Lake Land

\$119,000

Description:

Prime Buildable Lot on Deacon's Lodge Golf Course with Pelican Lake Access!

"Imagine building your dream home on this stunning, wooded lot, perfectly situated on hole 14 of the prestigious Deacon's Lodge Golf Course. Enjoy the best of both worlds with serene lake access to Pelican Lake, ideal for boating and recreation. This lot offers a unique opportunity to embrace luxury living in a beautiful, natural setting."

Don't miss this rare opportunity, secure your piece of paradise.

Additional Details:

Lot Acres	0.93
Lot Dimensions	227x183x227x173
School District	186
Taxes	\$540
Taxes with Assessments	\$540
Tax Year	2025

Additional Features:

Driving Directions:

Directions: From the Breezy Point gates, go north on Cty Rd 11 towards Crosslake for approx. 3 miles to a right on Cree Bay Circle to Right on Dog Leg to end of road.



Listed By:
Dane Arthur Real Estate Agency-Crosslake

Affinity Real Estate Inc. participates in the Regional Multiple Listing Service of Minnesota, Inc Broker Reciprocity (sm) program, allowing us to display other broker's listings on our website. All properties are subject to prior sale, change or withdrawal.



Call Affinity Real Estate

218-237-3333

info@affinityrealestate.com



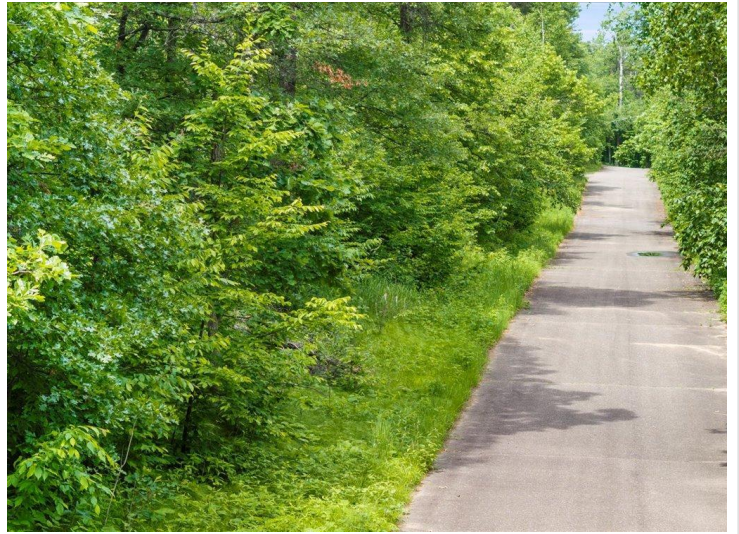
Affinity Real Estate - 600 Park Avenue South - Park Rapids MN 56470



website: www.AffinityRealEstate.com | email: info@affinityrealestate.com | office: 218-237-3333 | fax: 218-237-3377



\$119,000
 MLS 6741616 Lake Land
 XXX Dog Leg
 Pequot Lakes MN 56472



website: www.AffinityRealEstate.com | email: info@affinityrealestate.com | office: 218-237-3333 | fax: 218-237-3377



\$119,000
 MLS 6741616 Lake Land
 XXX Dog Leg
 Pequot Lakes MN 56472



website: www.AffinityRealEstate.com | email: info@affinityrealestate.com | office: 218-237-3333 | fax: 218-237-3377



\$119,000

MLS 6741616 Lake Land
XXX Dog Leg
Pequot Lakes MN 56472