

MLS 6741617 Lake Land

\$10,000

Description:

Welcome to beautiful Todd County, Minnesota !! This lot in Sylvan Shores is open to the builder of your choice. You will be able to enjoy all the amenities the association provides; pool, community center, camp ground, club house and access to other lakes within the Sylvan Shores Association. Local fishing and public hunting land nearby are huge pluses !! Escape the noise and commotion of the big citie!! The Sylvan Shores Community is located just over 2 hours north of the Twin Cities. This lot is 3/4 of an acre and backs up to small lake for your enjoyment. Priced to sell !!

Additional Details:

Lot Acres	0.73
Lot Dimensions	84x199x206x287
School District	2170
Taxes	\$28
Taxes with Assessments	\$28
Tax Year	2025

Additional Features:

Driving Directions:

From highway 10 take county rd 7 west for 4.7 miles, left on cnty rd 26, left on 285th, right on 400th, then left on Oriole Court. Property on the righth.



Listed By:
Timber Ghost Realty, LLC

Affinity Real Estate Inc. participates in the Regional Multiple Listing Service of Minnesota, Inc Broker Reciprocity (sm) program, allowing us to display other broker's listings on our website. All properties are subject to prior sale, change or withdrawal.



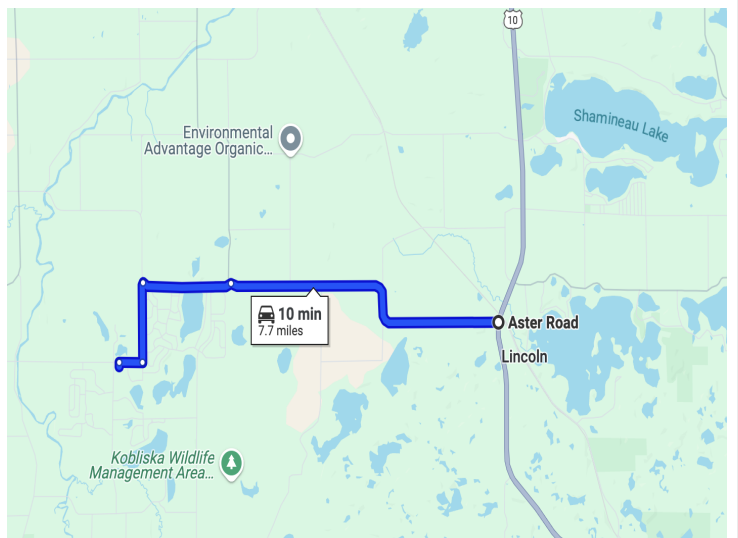
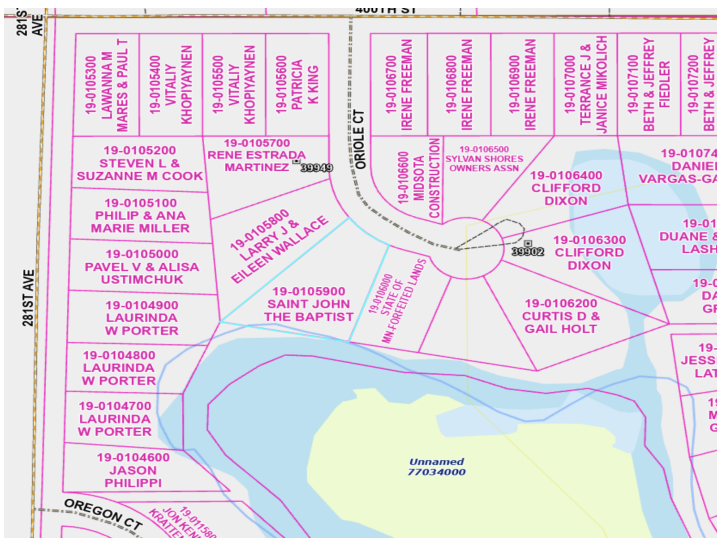
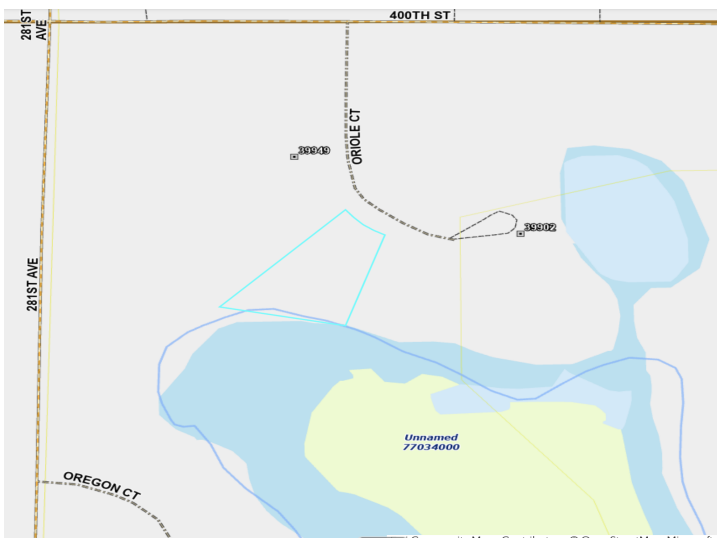
Call Affinity Real Estate

218-237-3333

info@affinityrealestate.com



Affinity Real Estate - 600 Park Avenue South - Park Rapids MN 56470



website: www.AffinityRealEstate.com | email: info@affinityrealestate.com | office: 218-237-3333 | fax: 218-237-3377



\$10,000
 MLS 6741617 Lake Land
 399xx Oriole Court
 Browerville MN 56438

website: www.AffinityRealEstate.com | email: info@affinityrealestate.com | office: 218-237-3333 | fax:218-237-3377



\$10,000

MLS 6741617 Lake Land
399xx Oriole Court
Browerville MN 56438