



MLS 6741934 Residential

**\$199,900**

792 sq ft  
2 bedrooms  
1 baths

13000 Inlet Circle  
Park Rapids MN 56470

Status: Active

**Description:**

This seasonal cabin features two bedrooms and a half bath, exuding charming rusticity. It boasts vertical log construction, vaulted pine ceilings with exposed beams, hardwood floors, a stone wood-burning fireplace, updated cabinets, and a shiplap accent wall. Situated on 4 acres of pine-studded land with an RV hook-up, directly across the road from beautiful Eagle Lake, this property is ready for you to enjoy.

**Additional Details:**

Year Built	1925
Lot Acres	4
Lot Dimensions	192x300xirr
School District	309
Taxes	\$641
Taxes with Assessments	\$862
Tax Year	2025

**Additional Features:**

**Basement:** Crawl Space **Fuel:** Wood **Heat:** Fireplace(s) **Sewer:** Tank with Drainage Field **Water:** Submersible - 4 Inch **Air Conditioning:** None

**Driving Directions:**

From 34/71 in Park Rapids, North on 71 to a right on County 89 to a right on Inlet Circle to Inlet Trail to property.



Listed By:  
Wolff & Simon Real Estate

Affinity Real Estate Inc. participates in the Regional Multiple Listing Service of Minnesota, Inc Broker Reciprocity (sm) program, allowing us to display other broker's listings on our website. All properties are subject to prior sale, change or withdrawal.



**Call Affinity Real Estate**

**218-237-3333**

**info@affinityrealestate.com**



**Affinity Real Estate - 600 Park Avenue South - Park Rapids MN 56470**





website: [www.AffinityRealEstate.com](http://www.AffinityRealEstate.com) | email: [info@affinityrealestate.com](mailto:info@affinityrealestate.com) | office: 218-237-3333 | fax: 218-237-3377

**Affinity**  
REAL ESTATE INC

**\$199,900**  
MLS 6741934 Residential  
13000 Inlet Circle  
Park Rapids MN 56470



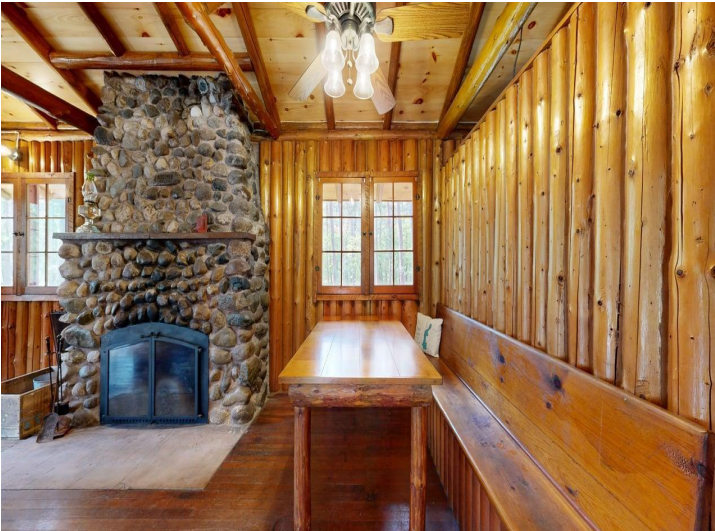


website: [www.AffinityRealEstate.com](http://www.AffinityRealEstate.com) | email: [info@affinityrealestate.com](mailto:info@affinityrealestate.com) | office: 218-237-3333 | fax: 218-237-3377

**Affinity**  
REAL ESTATE INC

**\$199,900**  
MLS 6741934 Residential  
13000 Inlet Circle  
Park Rapids MN 56470



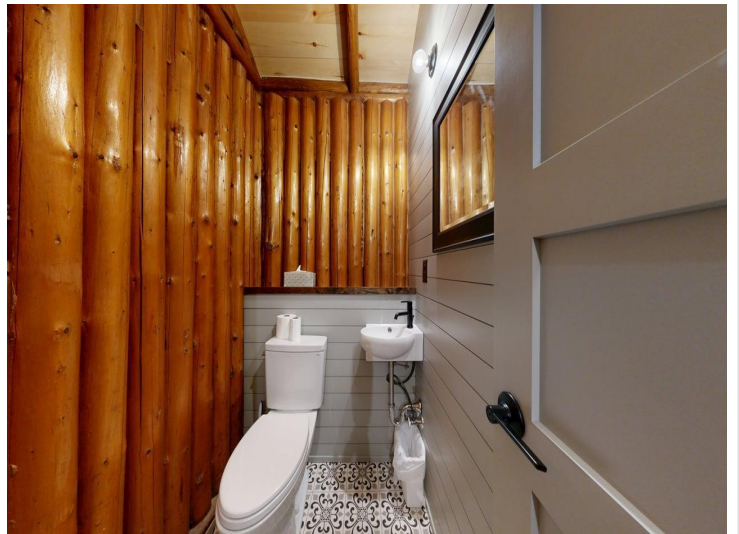


website: [www.AffinityRealEstate.com](http://www.AffinityRealEstate.com) | email: [info@affinityrealestate.com](mailto:info@affinityrealestate.com) | office: 218-237-3333 | fax: 218-237-3377

**Affinity**  
REAL ESTATE INC

**\$199,900**  
MLS 6741934 Residential  
13000 Inlet Circle  
Park Rapids MN 56470



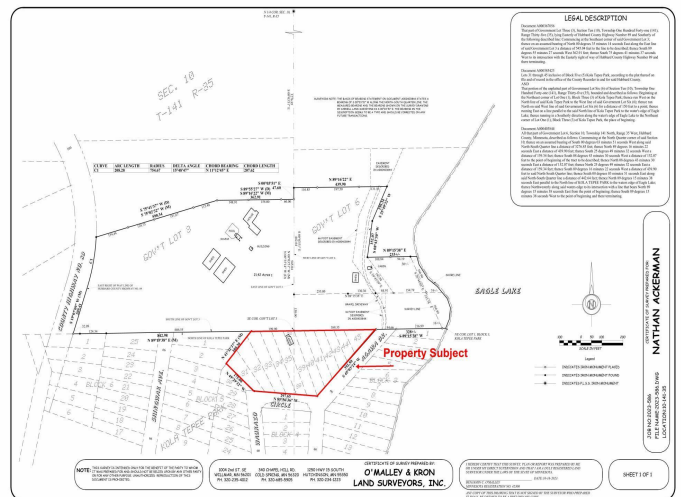


website: [www.AffinityRealEstate.com](http://www.AffinityRealEstate.com) | email: [info@affinityrealestate.com](mailto:info@affinityrealestate.com) | office: 218-237-3333 | fax: 218-237-3377



**\$199,900**  
MLS 6741934 Residential  
13000 Inlet Circle  
Park Rapids MN 56470





website: [www.AffinityRealEstate.com](http://www.AffinityRealEstate.com) | email: [info@affinityrealestate.com](mailto:info@affinityrealestate.com) | office: 218-237-3333 | fax: 218-237-3377



**\$199,900**  
MLS 6741934 Residential  
13000 Inlet Circle  
Park Rapids MN 56470