



MLS 6742002 Lake Land

\$329,900

Description:

This Eagle Lake Lot features 155' of prime waterfront situated on 2.73 wooded acres. Located on a scenic point, the property offers stunning views with a gentle slope leading down to the included dock. It has extensive landscaping and a fire pit, making it the perfect setting for a cabin or year-round home. With excellent fishing opportunities and direct boating access to Eagle, Island, and Potato Lakes, this property has a lot to offer.

Additional Details:

Lot Acres	2.73
Lot Dimensions	155x745x151x728
School District	309
Taxes	\$802
Taxes with Assessments	\$802
Tax Year	2025

Additional Features:

Driving Directions:

From 34/71 in Park Rapids, North on 71 to a right on County 89 to a right on Inlet Circle to Inlet Trail to property.



Listed By:
Wolff & Simon Real Estate

Affinity Real Estate Inc. participates in the Regional Multiple Listing Service of Minnesota, Inc Broker Reciprocity (sm) program, allowing us to display other broker's listings on our website. All properties are subject to prior sale, change or withdrawal.



Call Affinity Real Estate

218-237-3333

info@affinityrealestate.com



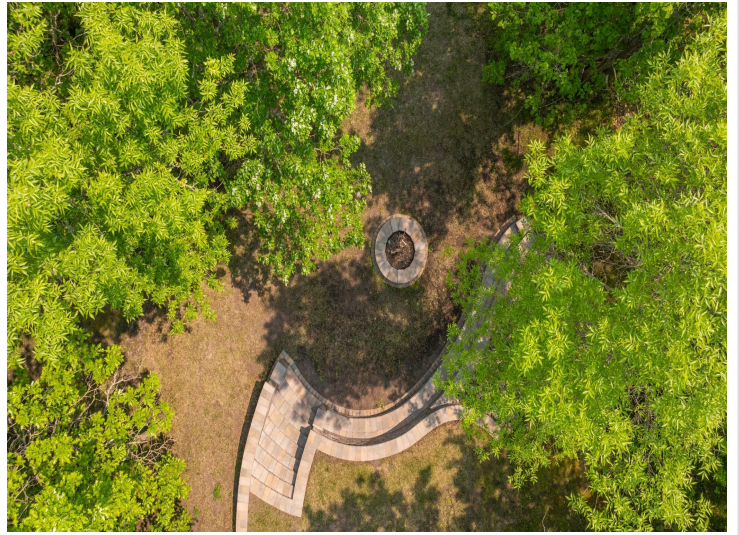
Affinity Real Estate - 600 Park Avenue South - Park Rapids MN 56470



website: www.AffinityRealEstate.com | email: info@affinityrealestate.com | office: 218-237-3333 | fax: 218-237-3377



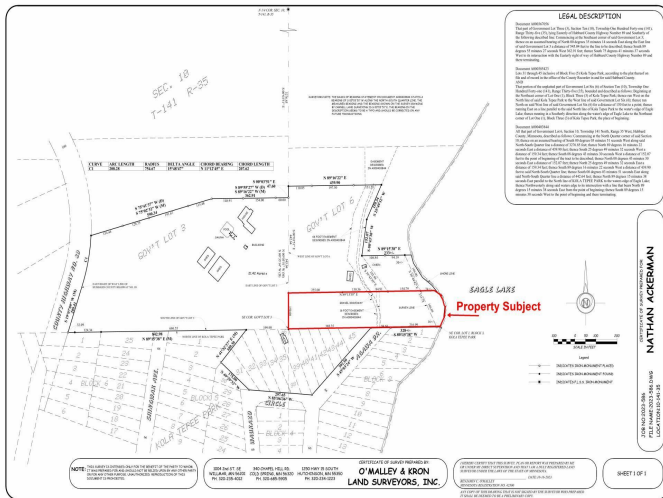
\$329,900
 MLS 6742002 Lake Land
 TBD Inlet Circle
 Park Rapids MN 56470



website: www.AffinityRealEstate.com | email: info@affinityrealestate.com | office: 218-237-3333 | fax: 218-237-3377



\$329,900
 MLS 6742002 Lake Land
 TBD Inlet Circle
 Park Rapids MN 56470



website: www.AffinityRealEstate.com | email: info@affinityrealestate.com | office: 218-237-3333 | fax: 218-237-3377



\$329,900
 MLS 6742002 Lake Land
 TBD Inlet Circle
 Park Rapids MN 56470