



MLS 6742094 Residential

\$399,900

1,754 sq ft
3 bedrooms
2 baths

20726 County 1
Park Rapids MN 56470

Status: Pending

Description:

Be the first! Brand new 2025 construction with so much to appreciate. For starters, this is truly a one level home with no steps inside or out. Includes 1,750+ finished sq ft with 3 bedrooms, 2 full baths, custom cabinetry (by SWI), quartz counters, stainless appliances, in-floor heat, Lorex HD security cameras and so much more! The ceilings in the L/R-Kit-Din are vaulted while the balance are at 9ft. The primary suite has a trayed ceiling finished in shiplap and accent lighting that really showcases this room. A large walk-in closet with built-in organizers and a spacious bathroom with tile shower, soaking tub and dual sinks are also featured. The garage interior is lined in steel, has a floor drain and is spacious at 25x25. The entire driveway, covered porch and rear patio are all finished in decorative, stamped concrete. This offering truly defines the classic comfort of a rambler with the look and feel of a modern build. Great location just a stone's throw from Headwaters Golf Course, Heartland Trail and Park Rapids.

Additional Details:

Year Built	2025
Lot Acres	2.47
Lot Dimensions	150 x 400 x 209 x 446
Garage Stalls	2
School District	309
Taxes	\$184
Taxes with Assessments	\$184
Tax Year	2025

Additional Features:

Basement: None **Fuel:** Propane **Garage:** 2 **Heat:** Heat Pump, Radiant Floor **Sewer:** Private Sewer, Septic System Compliant - Yes, Tank with Drainage Field **Water:** Drilled, Private, Well **Air Conditioning:** Heat Pump

Driving Directions:

From CR1 (Central Ave) @ Hwy 34: Go North on CR1 just past 204th St to property on right.



Listed By:
Affinity Real Estate Inc.

Affinity Real Estate Inc. participates in the Regional Multiple Listing Service of Minnesota, Inc Broker Reciprocity (sm) program, allowing us to display other broker's listings on our website. All properties are subject to prior sale, change or withdrawal.



Call Affinity Real Estate

218-237-3333

info@affinityrealestate.com



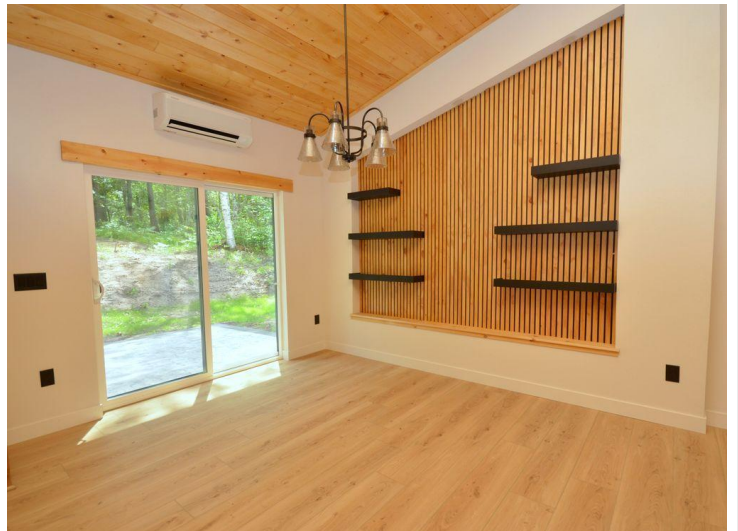
Affinity Real Estate - 600 Park Avenue South - Park Rapids MN 56470



website: www.AffinityRealEstate.com | email: info@affinityrealestate.com | office: 218-237-3333 | fax: 218-237-3377

Affinity
REAL ESTATE INC

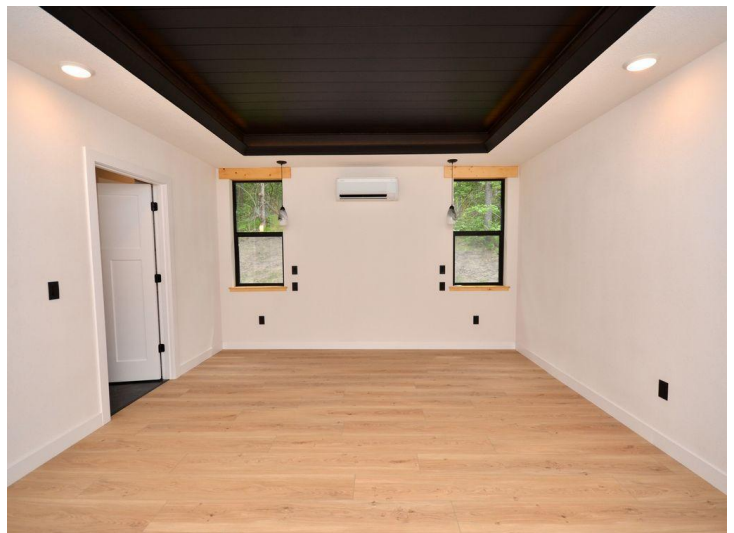
\$399,900
MLS 6742094 Residential
20726 County 1
Park Rapids MN 56470



website: www.AffinityRealEstate.com | email: info@affinityrealestate.com | office: 218-237-3333 | fax: 218-237-3377

Affinity
REAL ESTATE INC

\$399,900
MLS 6742094 Residential
20726 County 1
Park Rapids MN 56470



website: www.AffinityRealEstate.com | email: info@affinityrealestate.com | office: 218-237-3333 | fax: 218-237-3377



\$399,900
 MLS 6742094 Residential
 20726 County 1
 Park Rapids MN 56470



website: www.AffinityRealEstate.com | email: info@affinityrealestate.com | office: 218-237-3333 | fax: 218-237-3377



\$399,900
MLS 6742094 Residential
20726 County 1
Park Rapids MN 56470



website: www.AffinityRealEstate.com | email: info@affinityrealestate.com | office: 218-237-3333 | fax: 218-237-3377



\$399,900
 MLS 6742094 Residential
 20726 County 1
 Park Rapids MN 56470



website: www.AffinityRealEstate.com | email: info@affinityrealestate.com | office: 218-237-3333 | fax: 218-237-3377



\$399,900
 MLS 6742094 Residential
 20726 County 1
 Park Rapids MN 56470