



MLS 6742208 Lake Home

\$245,000

2,000 sq ft
2 bedrooms
2 baths

6384 Pinecone Lane
Walker MN 56484

Waterfront: Leech

Status: Pending

Description:

Enjoy Up North living just minutes from Walker with this charming 2-bedroom, 2-bathroom access home on coveted Kabekona Bay on Leech Lake. Featuring an open floor plan, a full walkout basement, and a 3-season porch, this home offers comfort and versatility. The spacious lot includes a 2-stall detached garage and is within walking distance to the beach and harbor slip as well as the paved bike trail—perfect for making the most of lake life.

Additional Details:

Year Built	1977
Lot Acres	1
Lot Dimensions	178x386
Garage Stalls	2
School District	113
Taxes	\$1,142
Taxes with Assessments	\$1,208
Tax Year	2025

Additional Features:

Basement: Block, Walkout **Fuel:** Electric, Propane **Garage:** 2 **Heat:** Baseboard, Forced Air **Sewer:** Private Sewer **Water:** Well **Air Conditioning:** None

Driving Directions:

North of Walker approximately 3 miles to Lake Ave Drive, turn right on Pinecone LN to #6384



Listed By:
Cedar Point Realty -Walker

Affinity Real Estate Inc. participates in the Regional Multiple Listing Service of Minnesota, Inc Broker Reciprocity (sm) program, allowing us to display other broker's listings on our website. All properties are subject to prior sale, change or withdrawal.



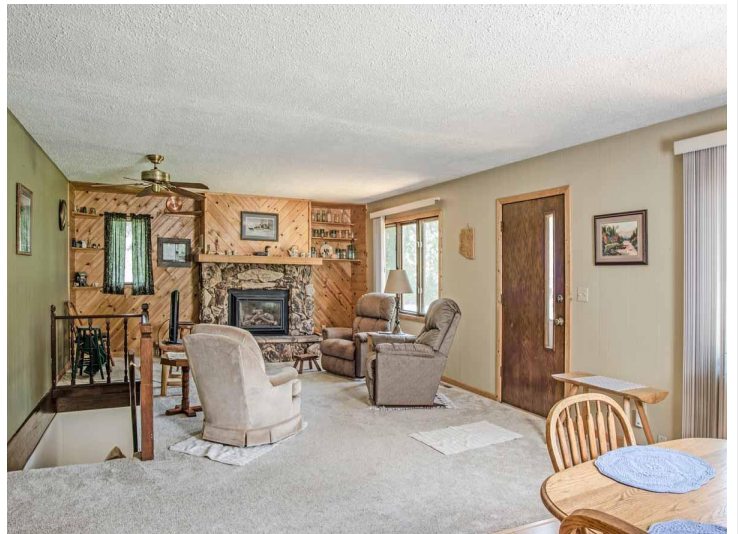
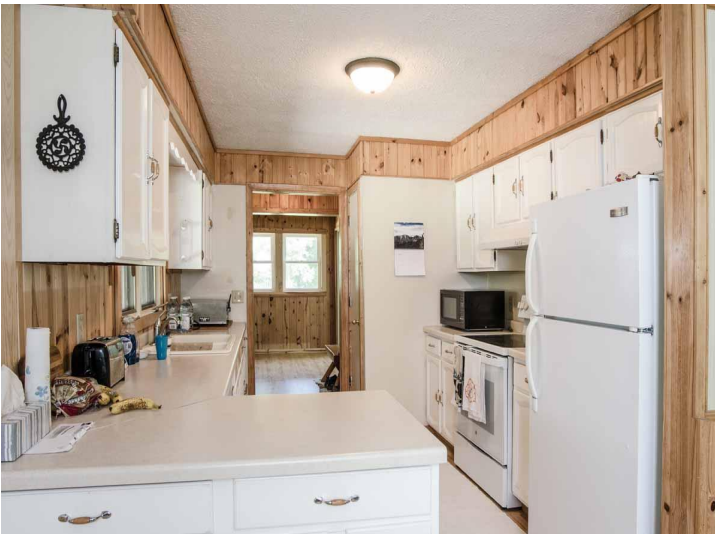
Call Affinity Real Estate

218-237-3333

info@affinityrealestate.com



Affinity Real Estate - 600 Park Avenue South - Park Rapids MN 56470



website: www.AffinityRealEstate.com | email: info@affinityrealestate.com | office: 218-237-3333 | fax: 218-237-3377

Affinity
REAL ESTATE INC

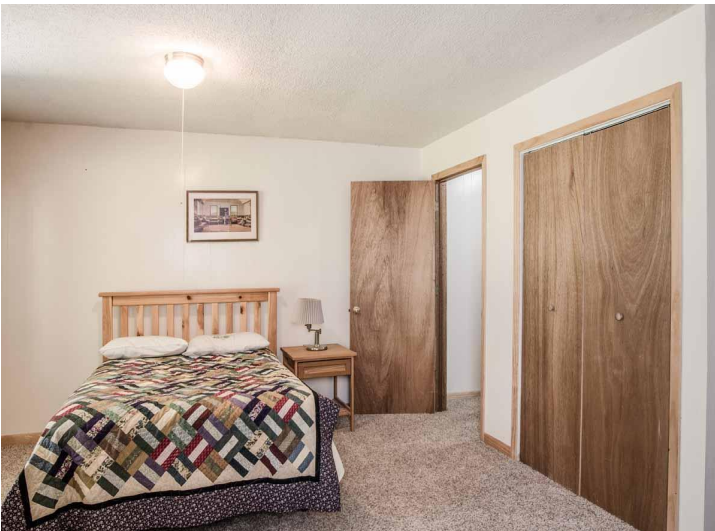
\$245,000
MLS 6742208 Lake Home
6384 Pinecone Lane
Walker MN 56484



website: www.AffinityRealEstate.com | email: info@affinityrealestate.com | office: 218-237-3333 | fax: 218-237-3377

Affinity
REAL ESTATE INC

\$245,000
MLS 6742208 Lake Home
6384 Pinecone Lane
Walker MN 56484



website: www.AffinityRealEstate.com | email: info@affinityrealestate.com | office: 218-237-3333 | fax: 218-237-3377

Affinity
REAL ESTATE INC

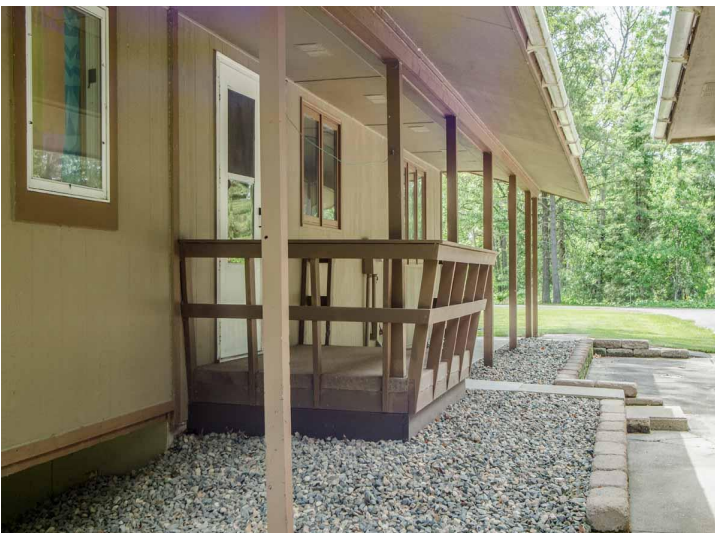
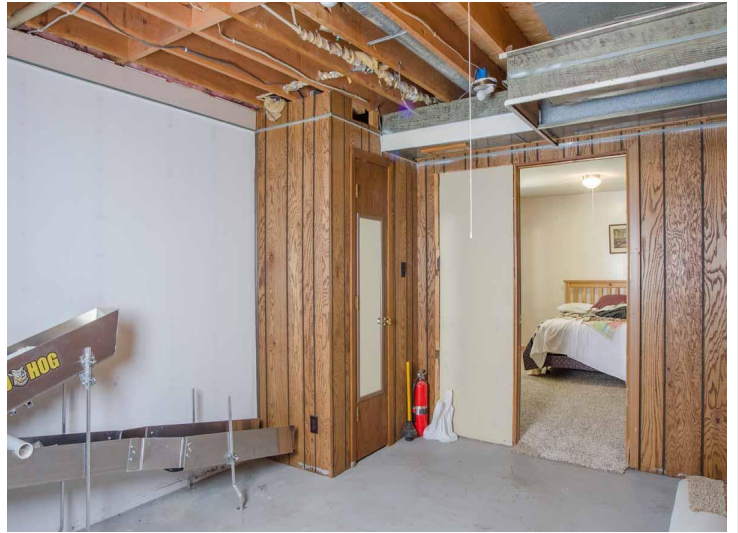
\$245,000
MLS 6742208 Lake Home
6384 Pinecone Lane
Walker MN 56484



website: www.AffinityRealEstate.com | email: info@affinityrealestate.com | office: 218-237-3333 | fax: 218-237-3377

Affinity
REAL ESTATE INC

\$245,000
MLS 6742208 Lake Home
6384 Pinecone Lane
Walker MN 56484



website: www.AffinityRealEstate.com | email: info@affinityrealestate.com | office: 218-237-3333 | fax: 218-237-3377



\$245,000
 MLS 6742208 Lake Home
 6384 Pinecone Lane
 Walker MN 56484



website: www.AffinityRealEstate.com | email: info@affinityrealestate.com | office: 218-237-3333 | fax: 218-237-3377



\$245,000
 MLS 6742208 Lake Home
 6384 Pinecone Lane
 Walker MN 56484



website: www.AffinityRealEstate.com | email: info@affinityrealestate.com | office: 218-237-3333 | fax: 218-237-3377



\$245,000
 MLS 6742208 Lake Home
 6384 Pinecone Lane
 Walker MN 56484



website: www.AffinityRealEstate.com | email: info@affinityrealestate.com | office: 218-237-3333 | fax: 218-237-3377



\$245,000
 MLS 6742208 Lake Home
 6384 Pinecone Lane
 Walker MN 56484



website: www.AffinityRealEstate.com | email: info@affinityrealestate.com | office: 218-237-3333 | fax: 218-237-3377



\$245,000
 MLS 6742208 Lake Home
 6384 Pinecone Lane
 Walker MN 56484



website: www.AffinityRealEstate.com | email: info@affinityrealestate.com | office: 218-237-3333 | fax: 218-237-3377



\$245,000
MLS 6742208 Lake Home
6384 Pinecone Lane
Walker MN 56484