



MLS 6742436 Residential

\$189,900

1,924 sq ft
5 bedrooms
2 baths

607 & 607 1/2 Riverside Avenue
Park Rapids MN 56470

Status: Active

Description:

This unique opportunity in Park Rapids has 2 homes on one property. Currently used as 2 rentals this is a great investment opportunity. 607 is a 3 bed, 1 bath with lots of space and potential to add sweat equity. 607 1/2 is a 2 bed, 1 bath that has been recently been fully renovated. Setup your showing today!

Additional Details:

Year Built	1985
Lot Acres	0.23
Lot Dimensions	70x140
Garage Stalls	1
School District	309
Taxes	\$2,330
Taxes with Assessments	\$2,772
Tax Year	2025

Additional Features:

Basement: None **Fuel:** Natural Gas **Garage:** 1 **Heat:** Other **Sewer:** City Sewer/Connected **Water:** City Water/Connected **Air Conditioning:** None

Driving Directions:

From 34/71 in Park Rapids head east for .3 miles and take a right on Riverside Ave. Continue for .4 miles and property is on the right.



Listed By:
Keller Williams Realty Professionals

Affinity Real Estate Inc. participates in the Regional Multiple Listing Service of Minnesota, Inc Broker Reciprocity (sm) program, allowing us to display other broker's listings on our website. All properties are subject to prior sale, change or withdrawal.



Call Affinity Real Estate

218-237-3333

info@affinityrealestate.com



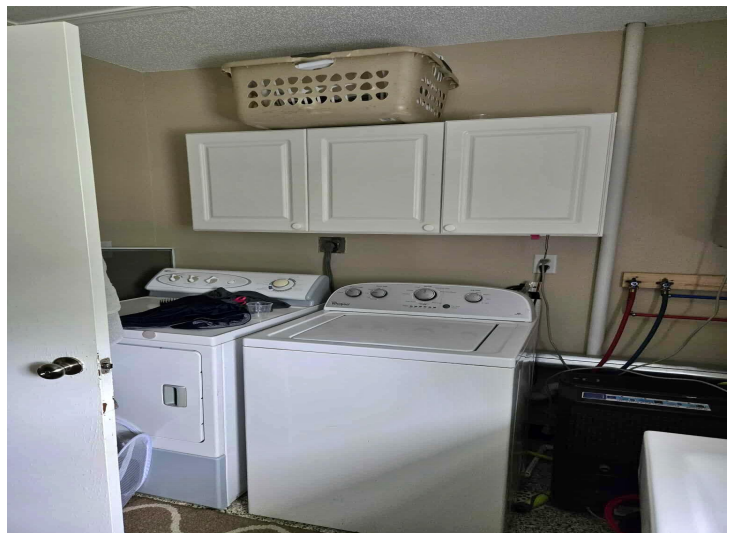
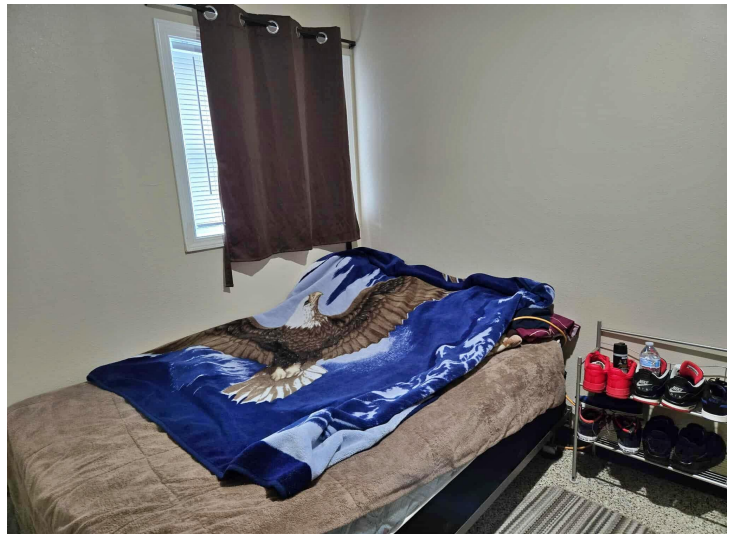
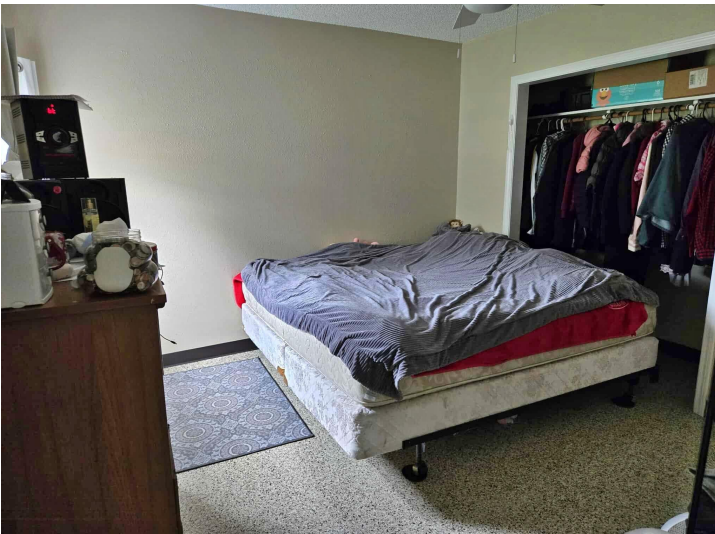
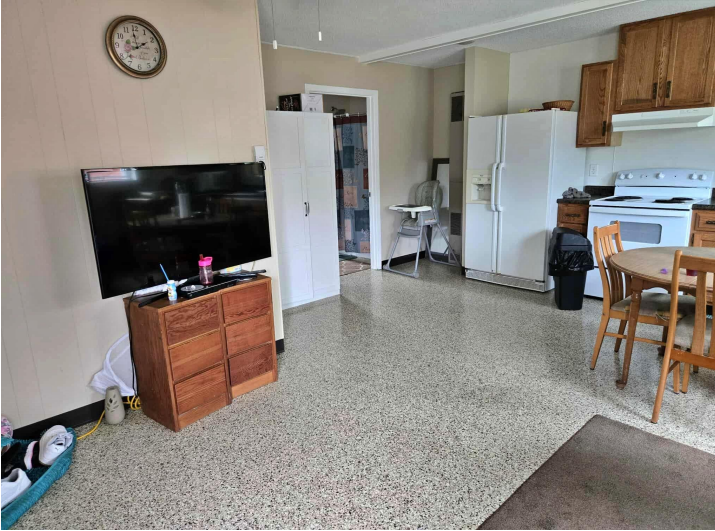
Affinity Real Estate - 600 Park Avenue South - Park Rapids MN 56470



website: www.AffinityRealEstate.com | email: info@affinityrealestate.com | office: 218-237-3333 | fax: 218-237-3377

Affinity
REAL ESTATE INC

\$189,900
MLS 6742436 Residential
607 & 607 1/2 Riverside
Avenue
Park Rapids MN 56470



website: www.AffinityRealEstate.com | email: info@affinityrealestate.com | office: 218-237-3333 | fax: 218-237-3377



\$189,900
 MLS 6742436 Residential
 607 & 607 1/2 Riverside
 Avenue
 Park Rapids MN 56470