



MLS 6742578 Lake Home

**\$320,000**

2,608 sq ft  
4 bedrooms  
3 baths

7300 County Road 8  
Longville MN 56655

Waterfront: Town Line

Status: Active

**Description:**

What a setting! Sitting on the shores of Town Line Lake sits this year round lake home with tons to offer. Full walk out basement, partially finished with a 3/4 bathroom, bedroom and gathering room almost complete. The upper level features tons of windows, a full length porch overlooking at the lake, three spacious bedrooms, fireplace, main floor laundry and 1/2 bath as well. There's a two car garage but then there's also a pole barn all on just under 2.5 acre lot. Come view this one today!

**Additional Details:**

Year Built	2002
Lot Acres	2.04
Lot Dimensions	284x321x300x193
Garage Stalls	4
School District	118
Taxes	\$1,330
Taxes with Assessments	\$1,396
Tax Year	2024

**Additional Features:**

**Basement:** Egress Window(s), Partially Finished, Sump Pump, Walkout **Fuel:** Electric **Garage:** 4 **Heat:** Baseboard **Sewer:** Private Sewer  
**Water:** Well **Air Conditioning:** None

**Driving Directions:**

From downtown Longville County 8 to property on the right.



Listed By:  
RE/MAX Results - Longville

Affinity Real Estate Inc. participates in the Regional Multiple Listing Service of Minnesota, Inc Broker Reciprocity (sm) program, allowing us to display other broker's listings on our website. All properties are subject to prior sale, change or withdrawal.



**Call Affinity Real Estate**

**218-237-3333**

**info@affinityrealestate.com**



**Affinity Real Estate - 600 Park Avenue South - Park Rapids MN 56470**





website: [www.AffinityRealEstate.com](http://www.AffinityRealEstate.com) | email: [info@affinityrealestate.com](mailto:info@affinityrealestate.com) | office: 218-237-3333 | fax: 218-237-3377



**\$320,000**  
MLS 6742578 Lake Home  
7300 County Road 8  
Longville MN 56655





website: [www.AffinityRealEstate.com](http://www.AffinityRealEstate.com) | email: [info@affinityrealestate.com](mailto:info@affinityrealestate.com) | office: 218-237-3333 | fax: 218-237-3377

**Affinity**  
REAL ESTATE INC

**\$320,000**  
MLS 6742578 Lake Home  
7300 County Road 8  
Longville MN 56655





website: [www.AffinityRealEstate.com](http://www.AffinityRealEstate.com) | email: [info@affinityrealestate.com](mailto:info@affinityrealestate.com) | office: 218-237-3333 | fax: 218-237-3377

**Affinity**  
REAL ESTATE INC

**\$320,000**  
MLS 6742578 Lake Home  
7300 County Road 8  
Longville MN 56655





website: [www.AffinityRealEstate.com](http://www.AffinityRealEstate.com) | email: [info@affinityrealestate.com](mailto:info@affinityrealestate.com) | office: 218-237-3333 | fax: 218-237-3377



**\$320,000**  
MLS 6742578 Lake Home  
7300 County Road 8  
Longville MN 56655



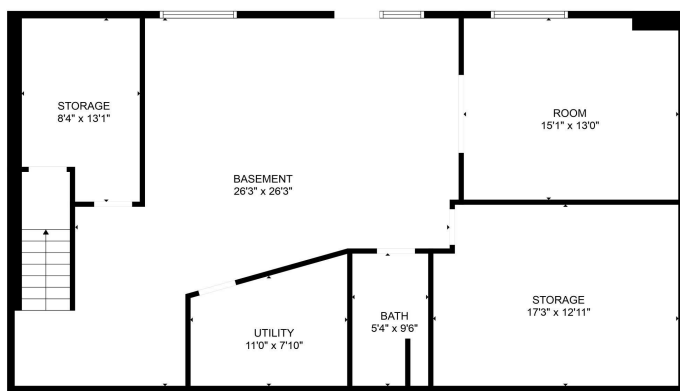


website: [www.AffinityRealEstate.com](http://www.AffinityRealEstate.com) | email: [info@affinityrealestate.com](mailto:info@affinityrealestate.com) | office: 218-237-3333 | fax: 218-237-3377

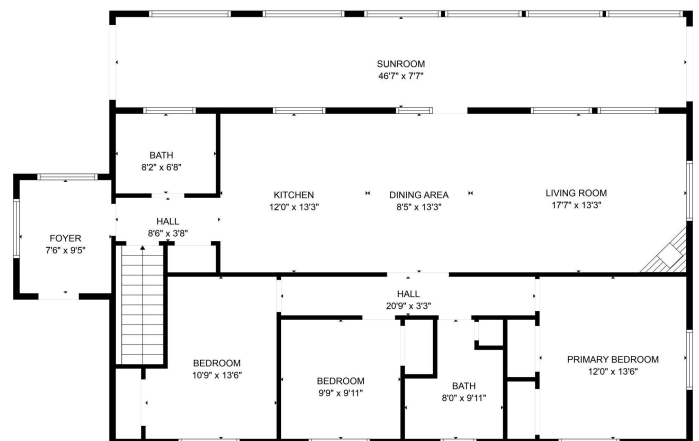


**\$320,000**  
 MLS 6742578 Lake Home  
 7300 County Road 8  
 Longville MN 56655





FLOOR PLAN CREATED BY CUBICASA APP. MEASUREMENTS DEEMED HIGHLY RELIABLE BUT NOT GUARANTEED.

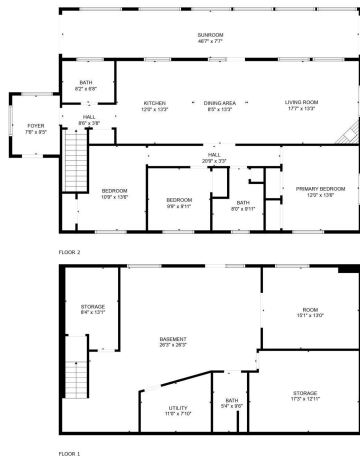


FLOOR PLAN CREATED BY CUBICASA APP. MEASUREMENTS DEEMED HIGHLY RELIABLE BUT NOT GUARANTEED.

website: [www.AffinityRealEstate.com](http://www.AffinityRealEstate.com) | email: [info@affinityrealestate.com](mailto:info@affinityrealestate.com) | office: 218-237-3333 | fax: 218-237-3377



**\$320,000**  
 MLS 6742578 Lake Home  
 7300 County Road 8  
 Longville MN 56655



FLOOR PLAN CREATED BY CUBICASA API; MEASUREMENTS DEEMED HIGHLY RELIABLE BUT NOT GUARANTEED.

website: [www.AffinityRealEstate.com](http://www.AffinityRealEstate.com) | email: [info@affinityrealestate.com](mailto:info@affinityrealestate.com) | office: 218-237-3333 | fax:218-237-3377



**\$320,000**  
 MLS 6742578 Lake Home  
 7300 County Road 8  
 Longville MN 56655