



MLS 6742631 Lake Home

\$249,900

1,120 sq ft
2 bedrooms
1 baths

1132 Natures Trail
Federal Dam MN 56641

Waterfront: Leech

Status: Pending

Description:

Located in the peaceful Natures Trail development near the Isle Harbor neighborhood, this 2-bedroom home offers a wonderful blend of comfort, functionality, and access to the beauty of Leech Lake. The spacious kitchen is a true highlight, with vaulted ceilings, room for a full dining table, and an island for casual seating. The open layout continues into the living room, creating an inviting space for gatherings or quiet evenings at home. Enjoy a large yard, perfect for relaxing or entertaining, along with a detached 2-stall garage and an extra screened cabin ready for your creative touch. The home also includes a washer and dryer, and a large crawl space providing excellent storage. As part of the neighborhood association, you'll have access to a boat slip and sandy beach on stunning Leech Lake. This property offers a peaceful lifestyle with all the perks of lake living. Leech Lake features over 112,000 acres of exceptional trophy fishing opportunities as well as endless recreational fun.

Additional Details:

Year Built	2005
Lot Acres	1
Lot Dimensions	177x291x122x291
Garage Stalls	2
School District	118
Taxes	\$1,222
Taxes with Assessments	\$1,288
Tax Year	2025

Additional Features:

Fuel: Propane **Heat:** Forced Air

Driving Directions:

From Longville - Head N on Hwy 84 for 4.6. Continue straight onto County Rd 8 NE for 14. miles. Turn left onto Peter's Pond Rd for .2 miles. Turn left onto Natures Trl to the subject property.



Listed By:
Heartland Real Estate

Affinity Real Estate Inc. participates in the Regional Multiple Listing Service of Minnesota, Inc Broker Reciprocity (sm) program, allowing us to display other broker's listings on our website. All properties are subject to prior sale, change or withdrawal.



Call Affinity Real Estate

218-237-3333

info@affinityrealestate.com



Affinity Real Estate - 600 Park Avenue South - Park Rapids MN 56470



website: www.AffinityRealEstate.com | email: info@affinityrealestate.com | office: 218-237-3333 | fax: 218-237-3377



\$249,900
 MLS 6742631 Lake Home
 1132 Natures Trail
 Federal Dam MN 56641



website: www.AffinityRealEstate.com | email: info@affinityrealestate.com | office: 218-237-3333 | fax: 218-237-3377



\$249,900
 MLS 6742631 Lake Home
 1132 Natures Trail
 Federal Dam MN 56641



website: www.AffinityRealEstate.com | email: info@affinityrealestate.com | office: 218-237-3333 | fax: 218-237-3377

Affinity
REAL ESTATE INC

\$249,900
MLS 6742631 Lake Home
1132 Natures Trail
Federal Dam MN 56641



website: www.AffinityRealEstate.com | email: info@affinityrealestate.com | office: 218-237-3333 | fax: 218-237-3377

Affinity
REAL ESTATE INC

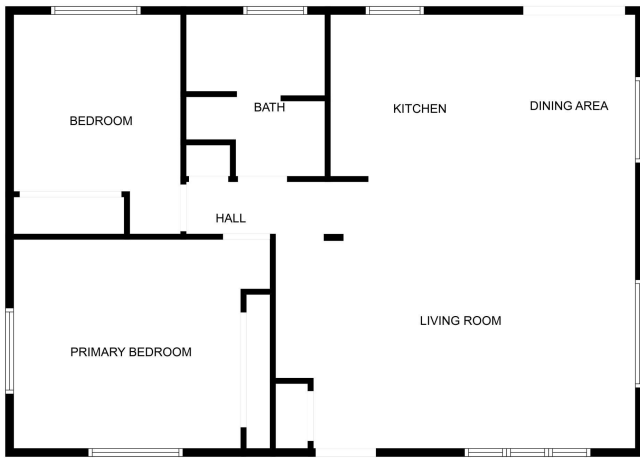
\$249,900
MLS 6742631 Lake Home
1132 Natures Trail
Federal Dam MN 56641



website: www.AffinityRealEstate.com | email: info@affinityrealestate.com | office: 218-237-3333 | fax: 218-237-3377

Affinity
REAL ESTATE INC

\$249,900
MLS 6742631 Lake Home
1132 Natures Trail
Federal Dam MN 56641



FLOOR PLAN CREATED BY CUBICASA APP. MEASUREMENTS DEEMED HIGHLY RELIABLE BUT NOT GUARANTEED.



website: www.AffinityRealEstate.com | email: info@affinityrealestate.com | office: 218-237-3333 | fax: 218-237-3377



\$249,900
 MLS 6742631 Lake Home
 1132 Natures Trail
 Federal Dam MN 56641