



MLS 6742919 Lake Home

\$250,000

768 sq ft
1 bedrooms
1 baths

39395 Outback Trail
Browerville MN 56438

Waterfront: Pine Island Lake (Fawn
Lake Twp.)

Status: Active

Description:

Escape to nature with this rare opportunity to own nearly 15 rolling acres of mostly highland, wooded terrain—perfect for year-round living or an easy-to-winterize seasonal getaway. This scenic property includes 991 feet of lakeshore for boating, fishing, and swimming, plus abundant wildlife. The land is private and peaceful, ideal for recreation, relaxation, or even future development. There are trails for ATVs and other outdoor activities. This property is a “shouse” style home which is split into a garage and a comfortable living space. Perfect for weekend getaways! There is also plenty of space to build a single-family home overlooking the water. Perfect for outdoor lovers, hobbyists, or anyone looking for privacy and a connection to nature. No association fees!

Additional Details:

Year Built	2002
Lot Acres	14.53
Lot Dimensions	irregular
Garage Stalls	2
School District	2170
Taxes	\$2,658
Taxes with Assessments	\$2,658
Tax Year	2024

Additional Features:

Fuel: Electric **Heat:** Baseboard

Driving Directions:

From Hwy 10 turn west on 270th St/Co Rd 18, then turn north (left) onto Co Rd 17, then turn west (left) on 392nd St then north (right) on Outback Trail, property is at the end of cul-de-sac.



Listed By:
Premier Real Estate Services

Affinity Real Estate Inc. participates in the Regional Multiple Listing Service of Minnesota, Inc Broker Reciprocity (sm) program, allowing us to display other broker's listings on our website. All properties are subject to prior sale, change or withdrawal.



Call Affinity Real Estate

218-237-3333

info@affinityrealestate.com



Affinity Real Estate - 600 Park Avenue South - Park Rapids MN 56470



website: www.AffinityRealEstate.com | email: info@affinityrealestate.com | office: 218-237-3333 | fax: 218-237-3377



\$250,000
MLS 6742919 Lake Home
39395 Outback Trail
Browerville MN 56438



website: www.AffinityRealEstate.com | email: info@affinityrealestate.com | office: 218-237-3333 | fax: 218-237-3377



\$250,000
 MLS 6742919 Lake Home
 39395 Outback Trail
 Browerville MN 56438



website: www.AffinityRealEstate.com | email: info@affinityrealestate.com | office: 218-237-3333 | fax: 218-237-3377

Affinity
REAL ESTATE INC

\$250,000
MLS 6742919 Lake Home
39395 Outback Trail
Browerville MN 56438



website: www.AffinityRealEstate.com | email: info@affinityrealestate.com | office: 218-237-3333 | fax: 218-237-3377

Affinity
REAL ESTATE INC

\$250,000
MLS 6742919 Lake Home
39395 Outback Trail
Browerville MN 56438



website: www.AffinityRealEstate.com | email: info@affinityrealestate.com | office: 218-237-3333 | fax: 218-237-3377



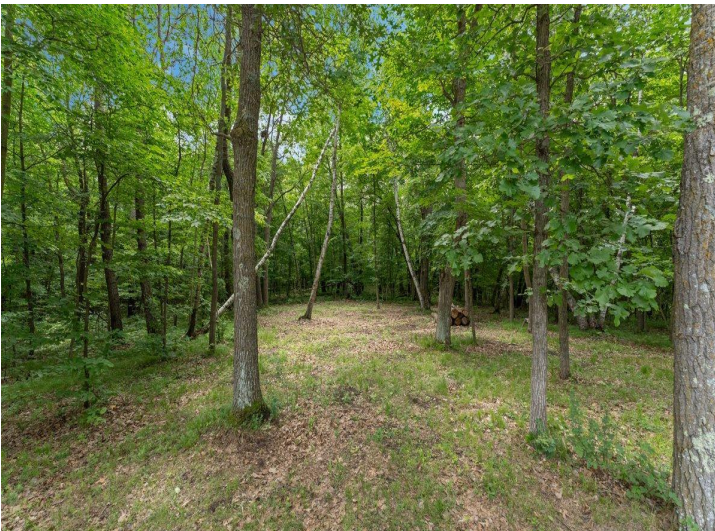
\$250,000
 MLS 6742919 Lake Home
 39395 Outback Trail
 Browerville MN 56438



website: www.AffinityRealEstate.com | email: info@affinityrealestate.com | office: 218-237-3333 | fax: 218-237-3377



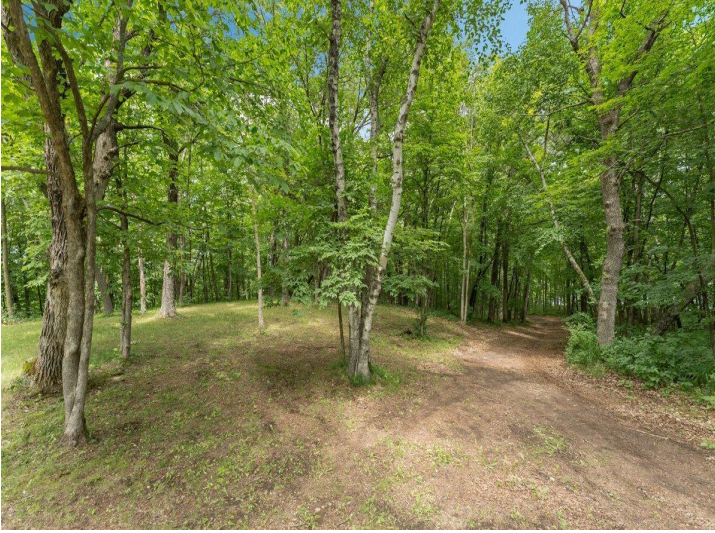
\$250,000
 MLS 6742919 Lake Home
 39395 Outback Trail
 Browerville MN 56438



website: www.AffinityRealEstate.com | email: info@affinityrealestate.com | office: 218-237-3333 | fax: 218-237-3377



\$250,000
 MLS 6742919 Lake Home
 39395 Outback Trail
 Browerville MN 56438



website: www.AffinityRealEstate.com | email: info@affinityrealestate.com | office: 218-237-3333 | fax: 218-237-3377



\$250,000
MLS 6742919 Lake Home
39395 Outback Trail
Browerville MN 56438