



MLS 6743193 Lake Home

\$785,000

3,588 sq ft
3 bedrooms
3 baths

13632 Piney Lane
Merrifield MN 56465

Waterfront: Bass Lake (Mission
Twp.)

Status: Active

Description:

Welcome to 13632 Piney Lane—a premier lakeside property in the heart of Merrifield, MN, offering refined living with unmatched shoreline serenity. With 175 feet of level, sand shoreline, this home is an exceptional blend of luxury, functionality, and outdoor enjoyment. Inside, you'll find a kitchen featuring granite countertops and maple cabinetry—perfect for both daily living and entertaining. The primary suite is a true retreat with a spa-like bath showcasing tiled walls and a walk-in shower that defines comfort and style.

Step into the four-season lakeside porch, where panoramic water views create a peaceful escape in every season. The walkout basement offers ample potential for customization, with room to finish additional square footage to suit your lifestyle.

Outside, a beautifully irrigated lawn, outdoor firepit, and a 28x48 detached garage enhance the property's appeal, providing space for storage, hobbies, or lake toys. The 500 sq ft year-round apartment or in-law suite adds flexibility for guests, extended family, or rental opportunities.

Whether you're seeking a private getaway or a year-round homestead with room to grow, this property delivers lakeside living with distinction.

Additional Details:

Year Built	1991
Lot Acres	3.37
Lot Dimensions	175x974x150x1072
Garage Stalls	4
School District	182
Taxes	\$3,216
Taxes with Assessments	\$3,216
Tax Year	2024

Additional Features:

Fuel: Natural Gas **Heat:** Forced Air

Driving Directions:

from Crookston on Co. Rd. #3 for 8 miles, turn east (left) on #109 at Bass Lake (left corner), go .6 mile turn right on Timber Dr., go .2 mile to Piney Way, go .1 mile to 13632 & sign
Listed By Keller Williams Realty Professionals



Affinity Real Estate Inc. participates in the Regional Multiple Listing Service of Minnesota, Inc Broker Reciprocity (sm) program, allowing us to display other broker's listings on our website. All properties are subject to prior sale, change or withdrawal.



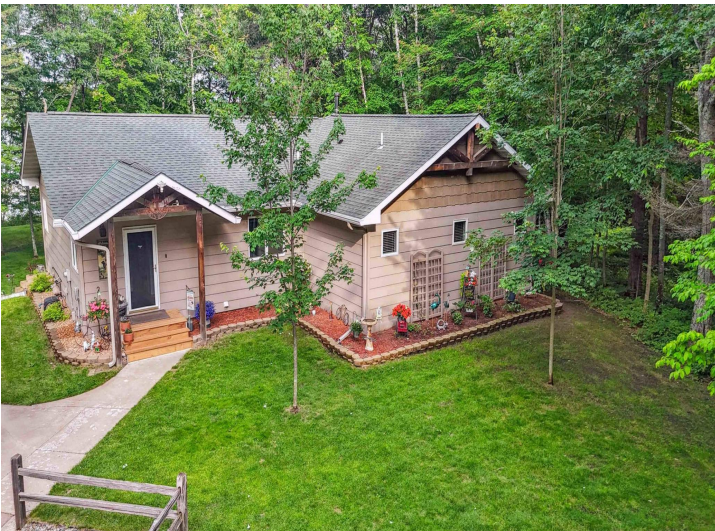
Call Affinity Real Estate

218-237-3333

info@affinityrealestate.com



Affinity Real Estate - 600 Park Avenue South - Park Rapids MN 56470



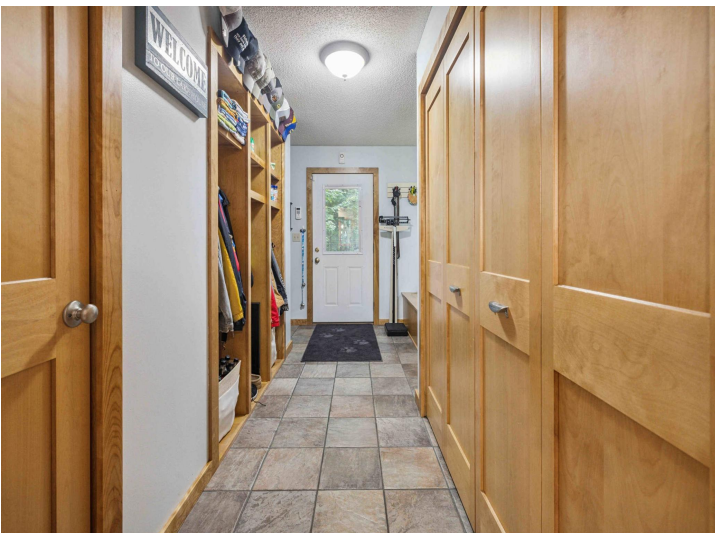
ESTIMATED AREAS
 GLA BELOW GROUND: 0 sq. ft. EXCLUDED AREAS: 1962 sq. ft.
 GLA FLOOR 2: 1397 sq. ft. EXCLUDED AREAS: 0 sq. ft.
 Total GLA: 1997 sq. ft. Total area: 3959 sq. ft.

FLOOR PLAN CREATED BY COMPARISON AND MEASUREMENTS. DIMENSIONS MAY VARY SLIGHTLY BUT NOT SIGNIFICANTLY.

website: www.AffinityRealEstate.com | email: info@affinityrealestate.com | office: 218-237-3333 | fax: 218-237-3377



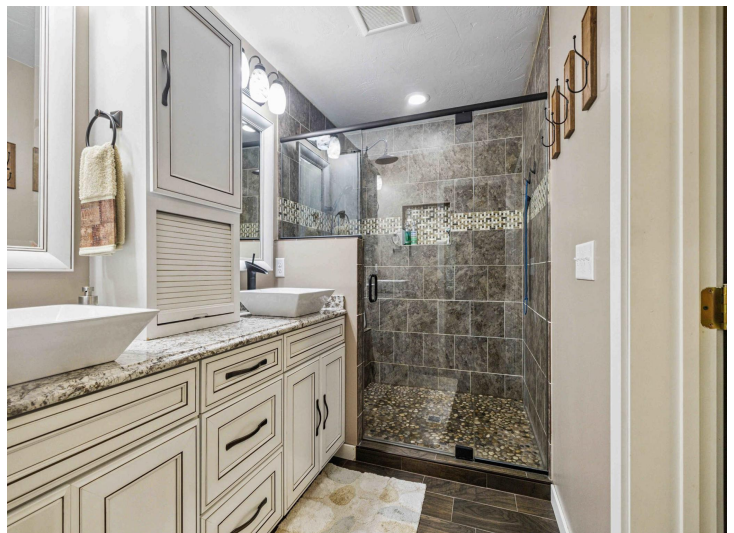
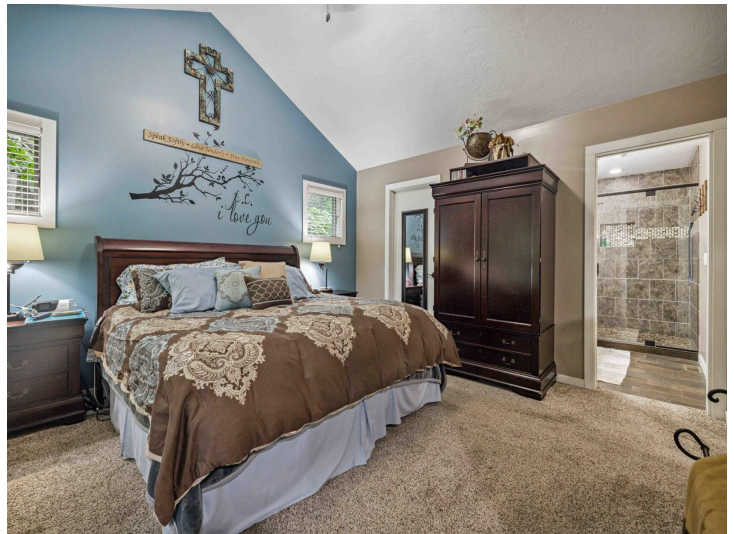
\$785,000
 MLS 6743193 Lake Home
 13632 Piney Lane
 Merrifield MN 56465



website: www.AffinityRealEstate.com | email: info@affinityrealestate.com | office: 218-237-3333 | fax: 218-237-3377

Affinity
REAL ESTATE INC

\$785,000
MLS 6743193 Lake Home
13632 Piney Lane
Merrifield MN 56465



website: www.AffinityRealEstate.com | email: info@affinityrealestate.com | office: 218-237-3333 | fax: 218-237-3377

Affinity
REAL ESTATE INC

\$785,000
MLS 6743193 Lake Home
13632 Piney Lane
Merrifield MN 56465



website: www.AffinityRealEstate.com | email: info@affinityrealestate.com | office: 218-237-3333 | fax: 218-237-3377

Affinity
REAL ESTATE INC

\$785,000
MLS 6743193 Lake Home
13632 Piney Lane
Merrifield MN 56465



website: www.AffinityRealEstate.com | email: info@affinityrealestate.com | office: 218-237-3333 | fax: 218-237-3377



\$785,000
MLS 6743193 Lake Home
13632 Piney Lane
Merrifield MN 56465



website: www.AffinityRealEstate.com | email: info@affinityrealestate.com | office: 218-237-3333 | fax: 218-237-3377

Affinity
REAL ESTATE INC

\$785,000
MLS 6743193 Lake Home
13632 Piney Lane
Merrifield MN 56465



website: www.AffinityRealEstate.com | email: info@affinityrealestate.com | office: 218-237-3333 | fax: 218-237-3377

Affinity
REAL ESTATE INC

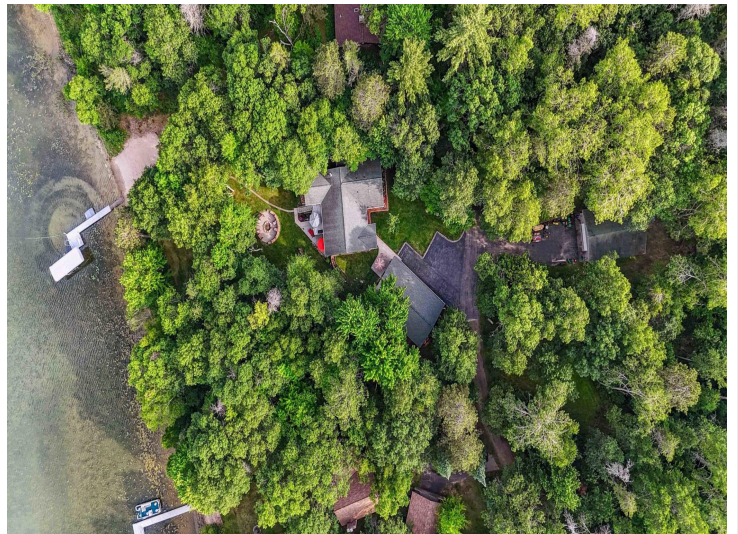
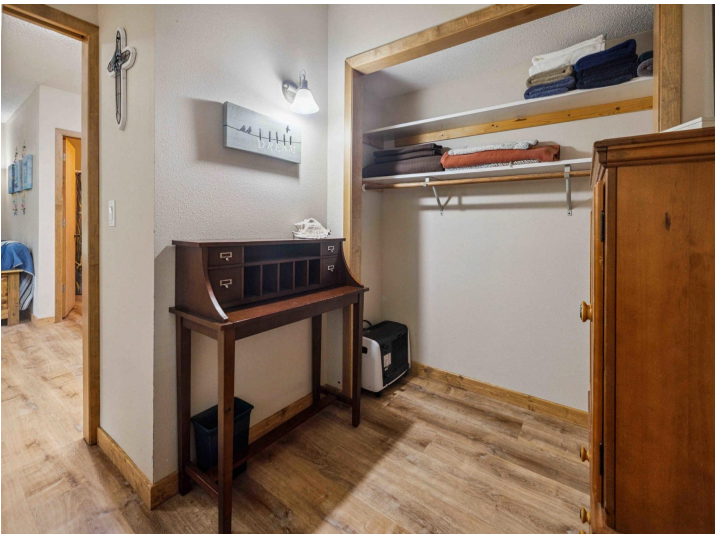
\$785,000
MLS 6743193 Lake Home
13632 Piney Lane
Merrifield MN 56465



website: www.AffinityRealEstate.com | email: info@affinityrealestate.com | office: 218-237-3333 | fax: 218-237-3377



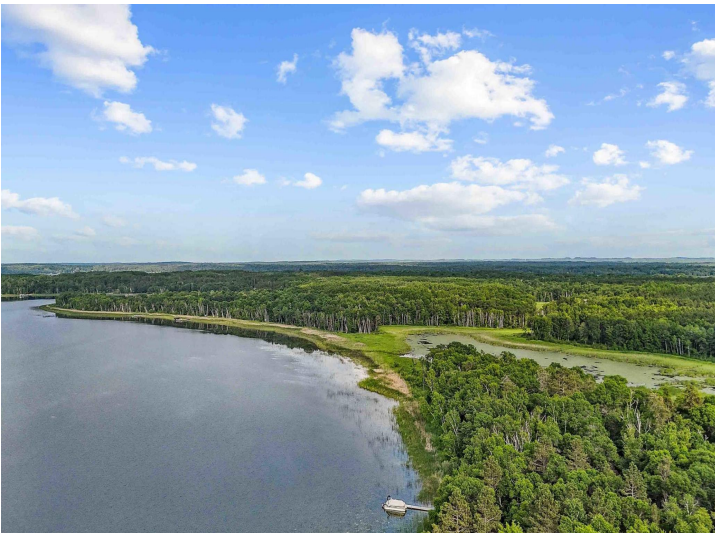
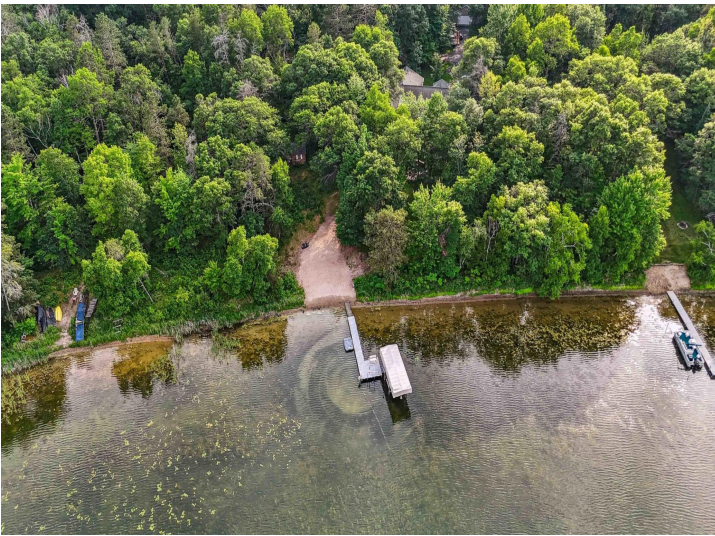
\$785,000
 MLS 6743193 Lake Home
 13632 Piney Lane
 Merrifield MN 56465



website: www.AffinityRealEstate.com | email: info@affinityrealestate.com | office: 218-237-3333 | fax: 218-237-3377



\$785,000
 MLS 6743193 Lake Home
 13632 Piney Lane
 Merrifield MN 56465



website: www.AffinityRealEstate.com | email: info@affinityrealestate.com | office: 218-237-3333 | fax: 218-237-3377



\$785,000
 MLS 6743193 Lake Home
 13632 Piney Lane
 Merrifield MN 56465



website: www.AffinityRealEstate.com | email: info@affinityrealestate.com | office: 218-237-3333 | fax: 218-237-3377



\$785,000
MLS 6743193 Lake Home
13632 Piney Lane
Merrifield MN 56465