



MLS 6743209 Lake Land

\$120,000

Description:

Buildable lot with Lake Miltona access and YES you can have your boat/dock here! Perfect lot for investment or to build a home. Many opportunities here! Surrounded by mature trees. Your Lake Miltona deeded access lot is just steps away, which you will share with only 7 of your neighbors. Lot on tar road, no gravel. No HOA fees. No restrictive covenants. Don't miss this property - make it yours today!

Additional Details:

Lot Acres	0.53
Lot Dimensions	129x214x120x168
School District	547
Taxes	\$1,228
Taxes with Assessments	\$1,228
Tax Year	2025

Additional Features:

Driving Directions:

Take N Lake Miltona Dr. to Tamarac



Listed By:
Edina Realty, Inc.

Affinity Real Estate Inc. participates in the Regional Multiple Listing Service of Minnesota, Inc Broker Reciprocity (sm) program, allowing us to display other broker's listings on our website. All properties are subject to prior sale, change or withdrawal.



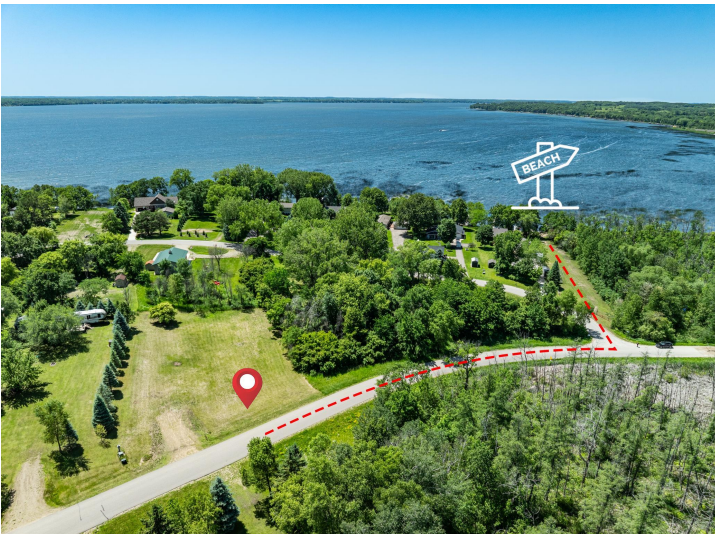
Call Affinity Real Estate

218-237-3333

info@affinityrealestate.com



Affinity Real Estate - 600 Park Avenue South - Park Rapids MN 56470



website: www.AffinityRealEstate.com | email: info@affinityrealestate.com | office: 218-237-3333 | fax: 218-237-3377

Affinity
REAL ESTATE INC

\$120,000
MLS 6743209 Lake Land
TBD Lake Miltona Drive
Miltona MN 56354



website: www.AffinityRealEstate.com | email: info@affinityrealestate.com | office: 218-237-3333 | fax: 218-237-3377

Affinity
REAL ESTATE INC

\$120,000

MLS 6743209 Lake Land
TBD Lake Miltona Drive
Miltona MN 56354