

MLS 6743407 Land

\$45,000

20 Acres
Raw Land

TBD FS 3100 Road
Longville MN 56655

Status: Pending

Description:

Escape to 20 acres of heavily wooded land bordering the Chippewa National Forest-your gateway to true Northwoods adventure. Perfectly located just north of Longville, this secluded property offers unmatched access to outdoor recreation. Ride your snowmobile directly onto a groomed trail, explore endless UTV/ATV routes, or simply walk out the back door for exceptional hunting opportunities. Surrounded by some of Minnesota's premier fishing and boating lakes, this land is a dream basecamp for all-season enjoyment. Accessed via a forest service road, the acreage is blanketed with mature oaks and hardwoods, providing both natural beauty and privacy in a prime recreational location

Additional Details:

Lot Acres	20
Lot Dimensions	660 x 1320 x 660 x 1320
School District	118
Taxes	\$238
Taxes with Assessments	\$238
Tax Year	2025

Additional Features:

Driving Directions:

From Longville north on 84, continue north on 8 for 2.3 miles, left on FS3100 for 690 yards, then left for 430 yards to the east edge of the property. The road continues into the property.



Listed By:
Bill Hansen Realty/Longville

Affinity Real Estate Inc. participates in the Regional Multiple Listing Service of Minnesota, Inc Broker Reciprocity (sm) program, allowing us to display other broker's listings on our website. All properties are subject to prior sale, change or withdrawal.



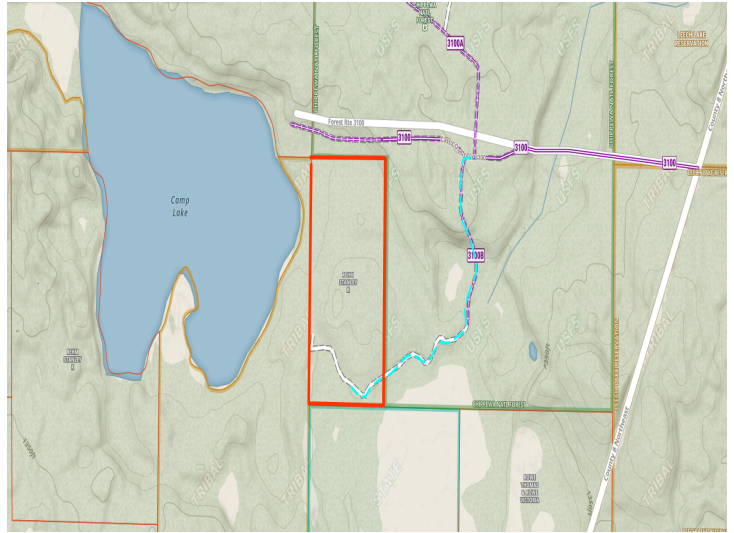
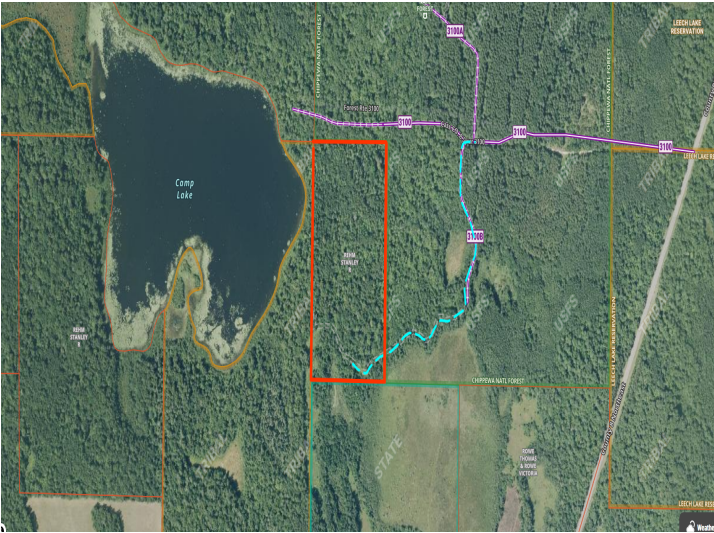
Call Affinity Real Estate

218-237-3333

info@affinityrealestate.com



Affinity Real Estate - 600 Park Avenue South - Park Rapids MN 56470



website: www.AffinityRealEstate.com | email: info@affinityrealestate.com | office: 218-237-3333 | fax: 218-237-3377



\$45,000
 MLS 6743407 Land
 TBD FS 3100 Road
 Longville MN 56655