



MLS 6743443 Land

\$189,000

2.86 Acres
Plat Designed

TBD County Highway 6
Detroit Lakes MN 56501

Status: Active

Description:

2.86 ACRE COMMERCIAL LOT ON THE CORNER OF COUNTY HWY 6 AND LONG LAKE RD. Excellent visibility with commercial zoning in place. BUILDABLE LOT READY FOR DEVELOPMENT!

Additional Details:

Lot Acres	2.86
Lot Dimensions	irr
School District	22
Taxes	\$264
Taxes with Assessments	\$264
Tax Year	2024

Additional Features:

Driving Directions:

From Highway 10 E- take 210th ave, Left to CR-6, Property on left. Corner of Co hwy 6 abd Long Lake Rd.

From West Lake Drive, take CR 6 and property on right.



Listed By:
Re/Max Lakes Region

Affinity Real Estate Inc. participates in the Regional Multiple Listing Service of Minnesota, Inc Broker Reciprocity (sm) program, allowing us to display other broker's listings on our website. All properties are subject to prior sale, change or withdrawal.



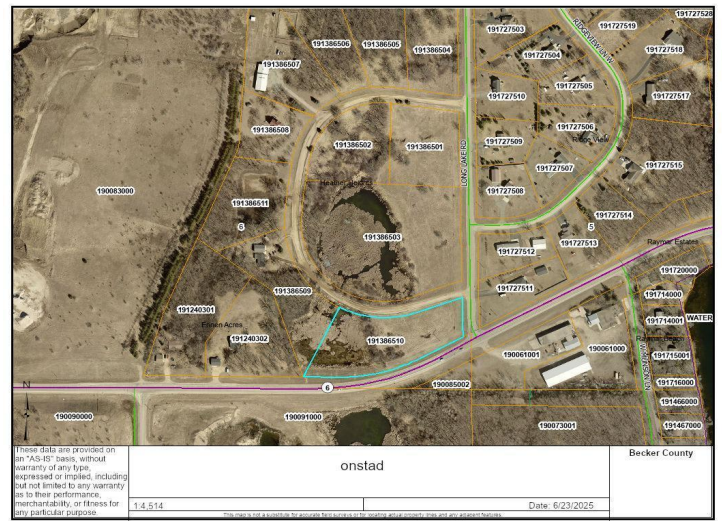
Call Affinity Real Estate

218-237-3333

info@affinityrealestate.com



Affinity Real Estate - 600 Park Avenue South - Park Rapids MN 56470



website: www.AffinityRealEstate.com | email: info@affinityrealestate.com | office: 218-237-3333 | fax: 218-237-3377

Affinity
REAL ESTATE INC

\$189,000
MLS 6743443 Land
TBD County Highway 6
Detroit Lakes MN 56501



website: www.AffinityRealEstate.com | email: info@affinityrealestate.com | office: 218-237-3333 | fax: 218-237-3377



\$189,000
MLS 6743443 Land
TBD County Highway 6
Detroit Lakes MN 56501