



MLS 6743748 Lake Land

**\$70,000**

#### Description:

Rare Opportunity on Lake Osakis!

Don't miss your chance to own this fantastic lot in a sought-after, year-round association on beautiful Lake Osakis. The lot features a newer concrete pad ready for your camper, with electric, shared well, and shared septic on site - just plug in and start enjoying lake life, or build your year-round dream home!

Just a one-minute walk to the water, you'll have access to a private boat launch and shared docks, offering the perfect setup for fishing, tubing, skiing, or simply relaxing on the water. This is the most desirable part of Lake Osakis - a smaller, protected northern bay that shields you from big waves while giving you direct boating access to the main body of the lake and all the way to the town of Osakis.

In winter, enjoy ice fishing and access to endless snowmobile trails. Head of the Lakes Resort is just a mile away, with a restaurant, bait shop, and gas on the water for your boat. The association takes care of lawn maintenance, so you can focus on making memories. Lots like this rarely become available - seize this opportunity today!

#### Additional Details:

Lot Acres	0.11
Lot Dimensions	50x100x50x100
School District	213
Taxes	\$206
Taxes with Assessments	\$210
Tax Year	2025

#### Additional Features:

#### Driving Directions:

From Osakis take Co Rd 3 N 1.3 miles to Co Rd 10 E 8.5 miles. Turn right on Finch Rd .5 miles to property.



Listed By:  
Edina Realty, Inc.

Affinity Real Estate Inc. participates in the Regional Multiple Listing Service of Minnesota, Inc Broker Reciprocity (sm) program, allowing us to display other broker's listings on our website. All properties are subject to prior sale, change or withdrawal.



Call Affinity Real Estate

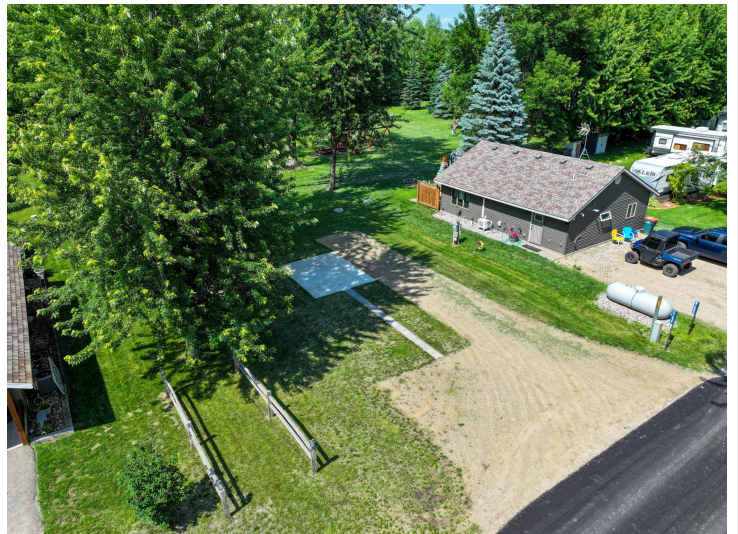
**218-237-3333**

[info@affinityrealestate.com](mailto:info@affinityrealestate.com)



Affinity Real Estate - 600 Park Avenue South - Park Rapids MN 56470





website: [www.AffinityRealEstate.com](http://www.AffinityRealEstate.com) | email: [info@affinityrealestate.com](mailto:info@affinityrealestate.com) | office: 218-237-3333 | fax: 218-237-3377

**Affinity**  
REAL ESTATE INC

**\$70,000**  
MLS 6743748 Lake Land  
21637 Finch Loop  
Osakis MN 56360





website: [www.AffinityRealEstate.com](http://www.AffinityRealEstate.com) | email: [info@affinityrealestate.com](mailto:info@affinityrealestate.com) | office: 218-237-3333 | fax: 218-237-3377



**\$70,000**  
 MLS 6743748 Lake Land  
 21637 Finch Loop  
 Osakis MN 56360





website: [www.AffinityRealEstate.com](http://www.AffinityRealEstate.com) | email: [info@affinityrealestate.com](mailto:info@affinityrealestate.com) | office: 218-237-3333 | fax: 218-237-3377



**\$70,000**  
 MLS 6743748 Lake Land  
 21637 Finch Loop  
 Osakis MN 56360





website: [www.AffinityRealEstate.com](http://www.AffinityRealEstate.com) | email: [info@affinityrealestate.com](mailto:info@affinityrealestate.com) | office: 218-237-3333 | fax: 218-237-3377



**\$70,000**

MLS 6743748 Lake Land  
21637 Finch Loop  
Osakis MN 56360