



MLS 6743763 Lake Home

\$1,595,000

2,256 sq ft
3 bedrooms
2 baths

551 Edward Lane
Longville MN 56655

Waterfront: Woman (main lake)

Status: Active

Description:

Set on 6.50 private acres with an incredible 1,083 feet of level, no-elevation shoreline, this property offers a rare stretch of lakeshore on one of Minnesota's sought-after lake chains. Woman Lake, connected to Girl and Child Lakes, offers over 30 miles of shoreline, making for excellent boating, fishing, and some of the clearest waters in the region. It's also a canvas for your dreams. The setting is truly something special: wide-open views, a hard-bottom lakeshore perfect for swimming, and the natural soundtrack of Red-Winged Blackbirds calling from the nearby marsh. Out every window: privacy. Out every door: opportunity. The existing structure includes three bedrooms, a kitchen with ample cabinetry and peninsula seating, large lake-facing windows, and a lower-level walkout with a pellet-burning fireplace. While the home provides a footprint and utilities, some may see this as a rare tear-down opportunity to create something spectacular in an unbeatable location. Whether you imagine updating the current home or designing something entirely new, this is a rare opportunity to own expansive acreage and premier shoreline on the Woman Lake Chain, where privacy, beauty, and potential come together. Properties like this don't come around often. Build your legacy on Woman Lake.

Additional Details:

Year Built	1965
Lot Acres	6.5
Lot Dimensions	1083x572x89x65x51x359
Garage Stalls	5
School District	118
Taxes	\$7,890
Taxes with Assessments	\$7,956
Tax Year	2025

Additional Features:

Fuel: Electric, Pellet **Heat:** Baseboard, Other

Driving Directions:

From Longville - Head out of town on Co Rd 5 for 2.1 miles. Turn left onto Shangri-La Dr NE for .9 miles. Turn right onto Edward Ln NE for approx. .6 miles to the subject property.



Listed By:
Heartland Real Estate

Affinity Real Estate Inc. participates in the Regional Multiple Listing Service of Minnesota, Inc Broker Reciprocity (sm) program, allowing us to display other broker's listings on our website. All properties are subject to prior sale, change or withdrawal.



Call Affinity Real Estate

218-237-3333

info@affinityrealestate.com



Affinity Real Estate - 600 Park Avenue South - Park Rapids MN 56470



website: www.AffinityRealEstate.com | email: info@affinityrealestate.com | office: 218-237-3333 | fax: 218-237-3377

Affinity
REAL ESTATE INC

\$1,595,000
MLS 6743763 Lake Home
551 Edward Lane
Longville MN 56655



website: www.AffinityRealEstate.com | email: info@affinityrealestate.com | office: 218-237-3333 | fax: 218-237-3377



\$1,595,000
MLS 6743763 Lake Home
551 Edward Lane
Longville MN 56655



website: www.AffinityRealEstate.com | email: info@affinityrealestate.com | office: 218-237-3333 | fax: 218-237-3377



\$1,595,000
 MLS 6743763 Lake Home
 551 Edward Lane
 Longville MN 56655



website: www.AffinityRealEstate.com | email: info@affinityrealestate.com | office: 218-237-3333 | fax: 218-237-3377



\$1,595,000
MLS 6743763 Lake Home
551 Edward Lane
Longville MN 56655



website: www.AffinityRealEstate.com | email: info@affinityrealestate.com | office: 218-237-3333 | fax: 218-237-3377

Affinity
REAL ESTATE INC

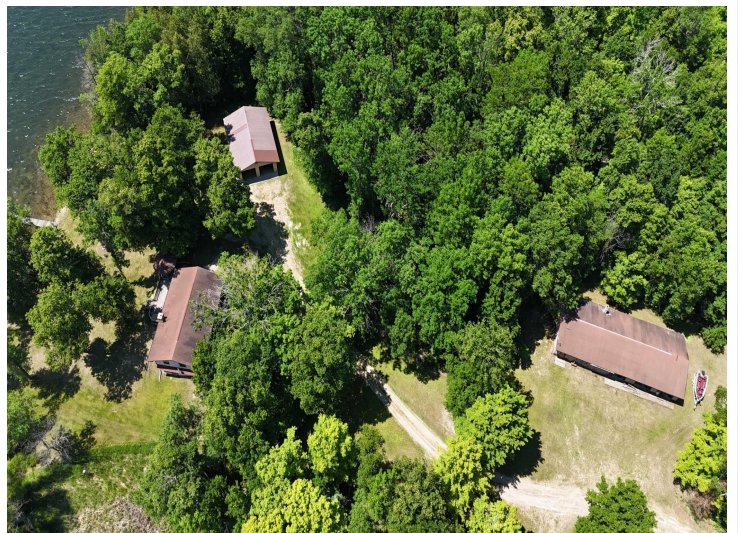
\$1,595,000
MLS 6743763 Lake Home
551 Edward Lane
Longville MN 56655



website: www.AffinityRealEstate.com | email: info@affinityrealestate.com | office: 218-237-3333 | fax: 218-237-3377

Affinity
REAL ESTATE INC

\$1,595,000
MLS 6743763 Lake Home
551 Edward Lane
Longville MN 56655



website: www.AffinityRealEstate.com | email: info@affinityrealestate.com | office: 218-237-3333 | fax: 218-237-3377

Affinity
REAL ESTATE INC

\$1,595,000
MLS 6743763 Lake Home
551 Edward Lane
Longville MN 56655



website: www.AffinityRealEstate.com | email: info@affinityrealestate.com | office: 218-237-3333 | fax: 218-237-3377



\$1,595,000

MLS 6743763 Lake Home
551 Edward Lane
Longville MN 56655