

MLS 6743877 Lake Land

\$65,000

Description:

49 acres of heavily wooded land in the heart of the National Forest! This property borders Camp Lake, known for it's excellent duck hunting. No road to the property and no easement to the property. Forest service road comes within 200 yards of the property, but an easement would need to be obtained from the landowner.

Additional Details:

Lot Acres	49
Lot Dimensions	1980 x 1285 x irr
School District	118
Taxes	\$526
Taxes with Assessments	\$526
Tax Year	2025

Additional Features:

Driving Directions:

No road access to property nor easement to property. From Longville north on 84, west on 200, north on Headquarters Drive NE (Forest Service road) will get you within 300 yards of the property.



Listed By:
Bill Hansen Realty/Longville

Affinity Real Estate Inc. participates in the Regional Multiple Listing Service of Minnesota, Inc Broker Reciprocity (sm) program, allowing us to display other broker's listings on our website. All properties are subject to prior sale, change or withdrawal.



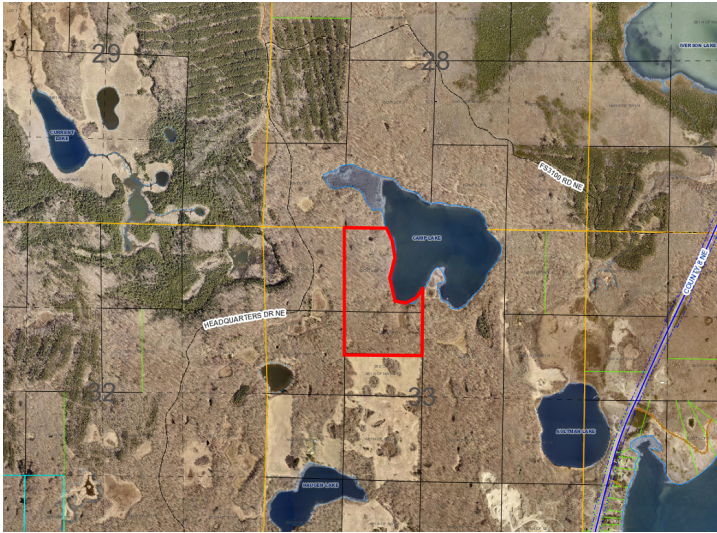
Call Affinity Real Estate

218-237-3333

info@affinityrealestate.com



Affinity Real Estate - 600 Park Avenue South - Park Rapids MN 56470



website: www.AffinityRealEstate.com | email: info@affinityrealestate.com | office: 218-237-3333 | fax: 218-237-3377



\$65,000

MLS 6743877 Lake Land
TBD Headquarters Drive
Longville MN 56655