



MLS 6744022 Residential

\$725,000

3,160 sq ft
3 bedrooms
3 baths


16521 Silver Lane
Evansville MN 56326

Status: Active

Description:

If you've been dreaming of a peaceful country lifestyle with exceptional hunting right out your back door and outstanding fishing opportunities nearby, this property delivers all that and more! Words alone don't fully capture the beauty and uniqueness of this property; it truly needs to be seen in person to be fully appreciated. Be sure to explore the photos, property video, and maps as they speak for themselves. Located approximately 16 miles northwest of Alexandria, this property sits in a scenic area rich with mature woods, lakes, ponds, wetlands, and productive agricultural land — an ideal blend of habitats that not only support strong whitetail deer populations but a wide variety of other wildlife as well, including waterfowl, pheasants, grouse, and turkey. Some may consider the beautifully maintained country home the crown jewel of the property, while others may point to the land itself — and both would be right. The homestead features a custom-built 3-bedroom, 3-bathroom home, constructed in 2005 by the current owners. Offering approximately 3,160 square feet of total space, the home includes a spacious vaulted great room, open kitchen and dining area, two bedrooms, two bathrooms, a laundry room, and patio doors leading out to a deck on the main floor. The lower level features a third bedroom, full bathroom, entertainment area, a craft room (which could easily be converted to a fourth bedroom), game area, storage space, mechanical room, and walk-out lower patio access. Outside, you'll find a well-maintained 64' x 32' pole building with a concrete floor, a manicured lawn complete with irrigation system, underground fencing, a garden area, and a peaceful backyard — all perfectly complementing this remarkable country home setting. As stated, the land itself is equally impressive. Approximately 13 acres of mature, predominantly oak woods are part of an overall larger wooded area expanding on neighboring properties, creating an excellent habitat block for whitetails. Not only are there high deer numbers in the area, but some truly mature bucks. The thick-beamed buck seen in the pictures scored approx. 183 inches gross and was harvested from this property. In addition, about 15.8 acres are enrolled in the Conservation Reserve Program (CRP) through 2026 and 2027, which includes restored prairie and a planted grove surrounding the home site, generating an annual payment of approximately \$1,600. The sellers would like to transfer these contracts to the new owners. You can look to see if re-enrollment is an option, or let the contracts expire and establish some food plot areas. Scenic ponds, tree lines, and brushy areas round out the diverse landscape of this remarkable property. Fishing opportunities are nearly endless, with the renowned Alexandria Lakes area and Otter Tail Lakes area close by. We're excited to present this exceptional property and all it has to offer. Please don't hesitate to contact either of us for more information or to schedule a private showing of this wonderful country estate!

Additional Details:

	Listed By: 2004 Whitetail Properties Real Estate
Affinity Real Estate Inc. participates in the Regional Multiple Listing Service of Minnesota, Inc Broker Reciprocity (sm) program, allowing us to display other broker's listings on our website. All properties are Subject to prior sale, change or withdrawal.	
Taxes	\$3,882
Taxes with Assessments	\$3,882
Tax Year	2025



Call Affinity Real Estate

218-237-3333

info@affinityrealestate.com



Affinity Real Estate - 600 Park Avenue South - Park Rapids MN 56470



website: www.AffinityRealEstate.com | email: info@affinityrealestate.com | office: 218-237-3333 | fax: 218-237-3377



\$725,000
 MLS 6744022 Residential
 16521 Silver Lane
 Evansville MN 56326



website: www.AffinityRealEstate.com | email: info@affinityrealestate.com | office: 218-237-3333 | fax: 218-237-3377

Affinity
REAL ESTATE INC

\$725,000
MLS 6744022 Residential
16521 Silver Lane
Evansville MN 56326



website: www.AffinityRealEstate.com | email: info@affinityrealestate.com | office: 218-237-3333 | fax: 218-237-3377

Affinity
REAL ESTATE INC

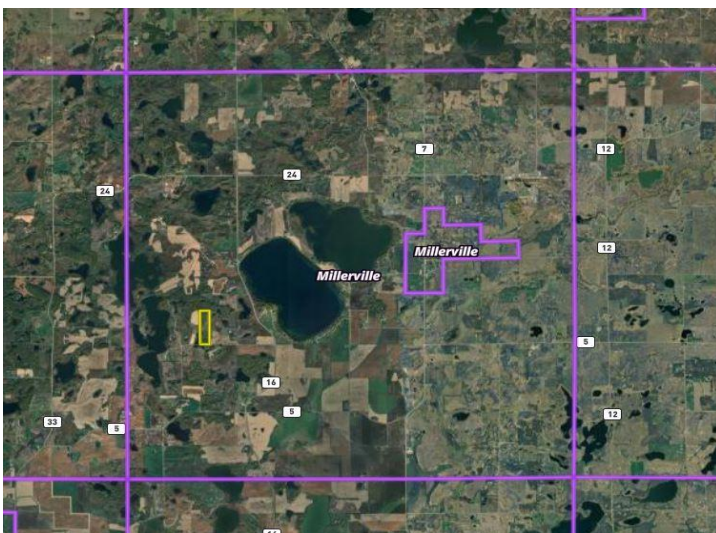
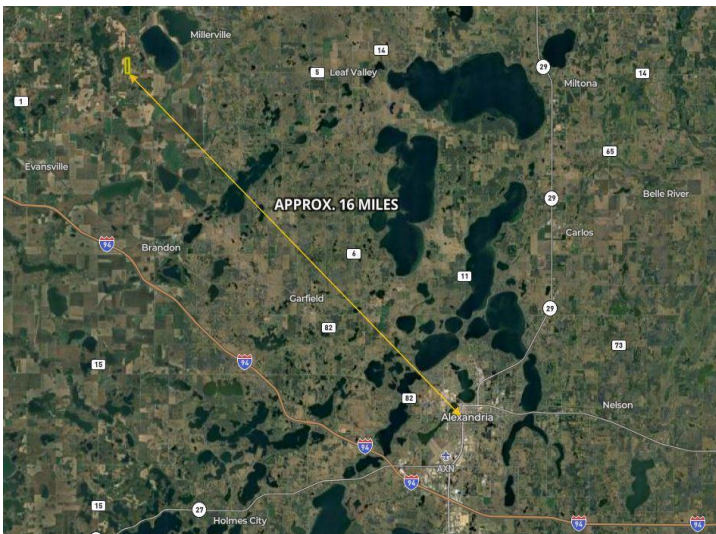
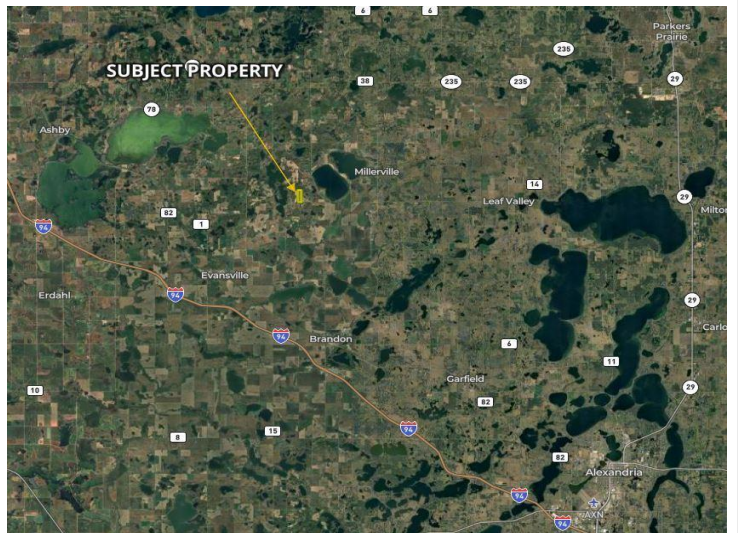
\$725,000
MLS 6744022 Residential
16521 Silver Lane
Evansville MN 56326



website: www.AffinityRealEstate.com | email: info@affinityrealestate.com | office: 218-237-3333 | fax: 218-237-3377

Affinity
REAL ESTATE INC

\$725,000
MLS 6744022 Residential
16521 Silver Lane
Evansville MN 56326



website: www.AffinityRealEstate.com | email: info@affinityrealestate.com | office: 218-237-3333 | fax: 218-237-3377



\$725,000
 MLS 6744022 Residential
 16521 Silver Lane
 Evansville MN 56326

website: www.AffinityRealEstate.com | email: info@affinityrealestate.com | office: 218-237-3333 | fax:218-237-3377



\$725,000

MLS 6744022 Residential
16521 Silver Lane
Evansville MN 56326

website: www.AffinityRealEstate.com | email: info@affinityrealestate.com | office: 218-237-3333 | fax:218-237-3377



\$725,000

MLS 6744022 Residential
16521 Silver Lane
Evansville MN 56326

website: www.AffinityRealEstate.com | email: info@affinityrealestate.com | office: 218-237-3333 | fax:218-237-3377



\$725,000

MLS 6744022 Residential
16521 Silver Lane
Evansville MN 56326

website: www.AffinityRealEstate.com | email: info@affinityrealestate.com | office: 218-237-3333 | fax:218-237-3377



\$725,000

MLS 6744022 Residential
16521 Silver Lane
Evansville MN 56326

website: www.AffinityRealEstate.com | email: info@affinityrealestate.com | office: 218-237-3333 | fax:218-237-3377



\$725,000

MLS 6744022 Residential
16521 Silver Lane
Evansville MN 56326

website: www.AffinityRealEstate.com | email: info@affinityrealestate.com | office: 218-237-3333 | fax:218-237-3377



\$725,000

MLS 6744022 Residential
16521 Silver Lane
Evansville MN 56326