



MLS 6744028 Lake Home

\$679,900

2,758 sq ft
3 bedrooms
3 baths

21079 Foothill Trail
Akeley MN 56433

Waterfront: Eighth Crow Wing

Status: Active

Description:

Tucked into 1.32 wooded acres with 151 feet of shoreline on 8th Crow Wing Lake, this year-round retreat blends comfort, space, and scenic beauty. In addition to an attached garage, the property includes a generous detached garage/shop—ideal for hobbies, storage, or extra vehicles. Inside, an open-concept layout with vaulted ceilings draws your eye to sweeping lake views. With over 2700 finished square feet, the home offers three bedrooms, a sleeping loft, three bathrooms, and three levels of versatile living space. The main level features a charming three-season porch and a seamless flow between the kitchen, dining, and living areas—all framed by serene lake and woodland vistas. Two bedrooms are located on this level, including a spacious primary suite. Upstairs, the loft provides additional sleeping space and a full bath, perfect for guests or a cozy reading nook. The walk-out lower level includes a third bedroom, finished living space, and unfinished areas ready to be tailored to your needs—whether that's a home gym, workshop, or media room. Outside, enjoy the covered grilling station, mature landscaping with water feature and bridge, and the peaceful privacy of a wooded setting. Whether you're seeking a full-time residence or a lakeside getaway, this property offers the space, setting, and flexibility to make it your own.

Additional Details:

Year Built	1999
Lot Acres	1.32
Lot Dimensions	121x408x151x286
Garage Stalls	5
School District	308
Taxes	\$4,689
Taxes with Assessments	\$4,910
Tax Year	2025

Additional Features:

Fuel: Propane, Wood **Heat:** Forced Air

Driving Directions:

Head south on State MN-64 turn right onto County 33 to Right on to County 49 to left onto Firefly Dr. to right on Foothill Trail follow signs to 21079 Foothill Trail.



Listed By:
Edina Realty, Inc.

Affinity Real Estate Inc. participates in the Regional Multiple Listing Service of Minnesota, Inc Broker Reciprocity (sm) program, allowing us to display other broker's listings on our website. All properties are subject to prior sale, change or withdrawal.



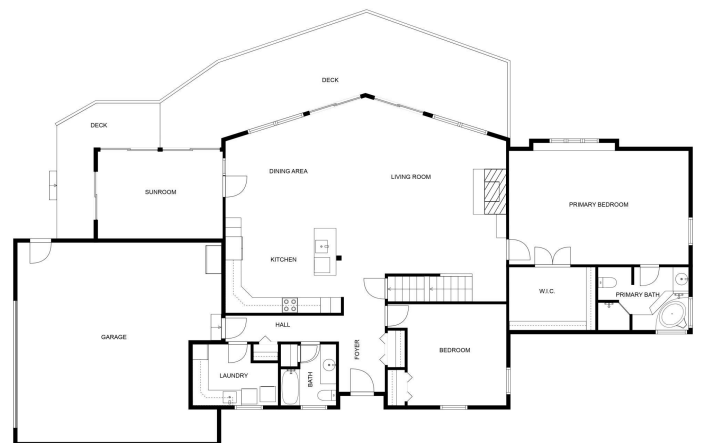
Call Affinity Real Estate

218-237-3333

info@affinityrealestate.com



Affinity Real Estate - 600 Park Avenue South - Park Rapids MN 56470



website: www.AffinityRealEstate.com | email: info@affinityrealestate.com | office: 218-237-3333 | fax: 218-237-3377

Affinity
REAL ESTATE INC

\$679,900
MLS 6744028 Lake Home
21079 Foothill Trail
Akeley MN 56433



website: www.AffinityRealEstate.com | email: info@affinityrealestate.com | office: 218-237-3333 | fax: 218-237-3377

Affinity
REAL ESTATE INC

\$679,900
MLS 6744028 Lake Home
21079 Foothill Trail
Akeley MN 56433



website: www.AffinityRealEstate.com | email: info@affinityrealestate.com | office: 218-237-3333 | fax: 218-237-3377

Affinity
REAL ESTATE INC

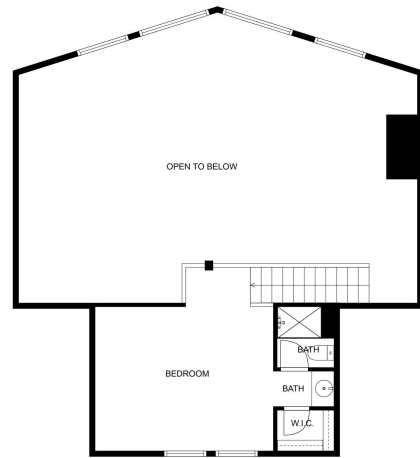
\$679,900
MLS 6744028 Lake Home
21079 Foothill Trail
Akeley MN 56433



website: www.AffinityRealEstate.com | email: info@affinityrealestate.com | office: 218-237-3333 | fax: 218-237-3377

Affinity
REAL ESTATE INC

\$679,900
MLS 6744028 Lake Home
21079 Foothill Trail
Akeley MN 56433



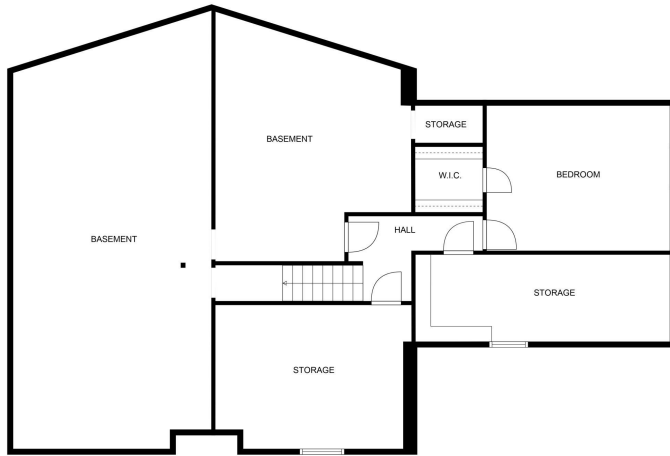
FLOOR PLAN CREATED BY CURICASA APP. MEASUREMENTS DEEMED HIGHLY RELIABLE BUT NOT GUARANTEED.



website: www.AffinityRealEstate.com | email: info@affinityrealestate.com | office: 218-237-3333 | fax: 218-237-3377

Affinity
REAL ESTATE INC

\$679,900
MLS 6744028 Lake Home
21079 Foothill Trail
Akeley MN 56433



FLOOR PLAN CREATED BY CUBICASA APP. MEASUREMENTS DEEMED HIGHLY RELIABLE BUT NOT GUARANTEED.



website: www.AffinityRealEstate.com | email: info@affinityrealestate.com | office: 218-237-3333 | fax: 218-237-3377

Affinity
REAL ESTATE INC

\$679,900

MLS 6744028 Lake Home
21079 Foothill Trail
Akeley MN 56433



website: www.AffinityRealEstate.com | email: info@affinityrealestate.com | office: 218-237-3333 | fax: 218-237-3377



\$679,900
 MLS 6744028 Lake Home
 21079 Foothill Trail
 Akeley MN 56433



website: www.AffinityRealEstate.com | email: info@affinityrealestate.com | office: 218-237-3333 | fax: 218-237-3377

Affinity
REAL ESTATE INC

\$679,900

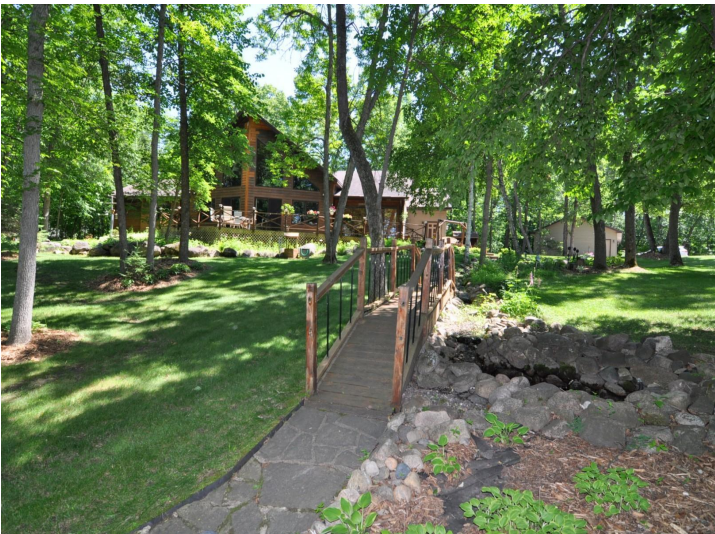
MLS 6744028 Lake Home
21079 Foothill Trail
Akeley MN 56433



website: www.AffinityRealEstate.com | email: info@affinityrealestate.com | office: 218-237-3333 | fax: 218-237-3377



\$679,900
MLS 6744028 Lake Home
21079 Foothill Trail
Akeley MN 56433



website: www.AffinityRealEstate.com | email: info@affinityrealestate.com | office: 218-237-3333 | fax: 218-237-3377



\$679,900
 MLS 6744028 Lake Home
 21079 Foothill Trail
 Akeley MN 56433



website: www.AffinityRealEstate.com | email: info@affinityrealestate.com | office: 218-237-3333 | fax: 218-237-3377



\$679,900

MLS 6744028 Lake Home
21079 Foothill Trail
Akeley MN 56433

website: www.AffinityRealEstate.com | email: info@affinityrealestate.com | office: 218-237-3333 | fax:218-237-3377



\$679,900

MLS 6744028 Lake Home
21079 Foothill Trail
Akeley MN 56433