



MLS 6744783 Residential

**\$196,900**

1,713 sq ft  
2 bedrooms  
2 baths

26994 State Highway 18  
Brainerd MN 56401

Status: Active

**Description:**

Escape to peace and privacy at this charming 2-bedroom, 1.5-bathroom home nestled on a spacious 2-acre lot along State Highway 18 in beautiful Garrison, MN. Whether you're looking for a primary residence, retreat, or an income-producing rental, this property delivers country comfort with room to roam.

Step inside and you'll find a functional layout with all the essentials: a welcoming living area, a practical kitchen, and two comfortable bedrooms. The single bathroom is clean and efficient, and the home is move-in ready—or ready for your personal upgrades and finishing touches.

Outside, the property truly shines. With 2 full acres, there's space for gardening, outdoor gatherings, or simply enjoying the peace of rural Minnesota. Add a garage, build a workshop, or just soak in the wooded views—this property is full of potential.

Located just minutes from Mille Lacs Lake, public boat landings, and the town of Garrison, you'll enjoy year-round access to fishing, boating, and seasonal activities. Plus, it's within easy reach of Highway 169 for commuting or trips to Brainerd.

**Additional Details:**

Year Built	1965
Lot Acres	2.01
Lot Dimensions	2
Garage Stalls	2
School District	181
Taxes	\$1,784
Taxes with Assessments	\$1,784
Tax Year	2024

**Additional Features:**

**Basement:** Partially Finished **Fuel:** Other **Garage:** 2 **Heat:** Heat Pump **Sewer:** City Sewer/Connected **Water:** City Water/Connected **Air Conditioning:** Window Unit(s)



Listed By:  
Beycome Brokerage Realty LLC  
71 from Brainerd, then east on MN-18 towards you

Affinity Real Estate Inc. participates in the Regional Multiple Listing Service of Minnesota, Inc Broker Reciprocity (sm) program, allowing us to display other broker's listings on our website. All properties are subject to prior sale, change or withdrawal.



**Call Affinity Real Estate**

**218-237-3333**

**info@affinityrealestate.com**



**Affinity Real Estate - 600 Park Avenue South - Park Rapids MN 56470**





website: [www.AffinityRealEstate.com](http://www.AffinityRealEstate.com) | email: [info@affinityrealestate.com](mailto:info@affinityrealestate.com) | office: 218-237-3333 | fax: 218-237-3377

**Affinity**  
REAL ESTATE INC

**\$196,900**  
MLS 6744783 Residential  
26994 State Highway 18  
Brainerd MN 56401





website: [www.AffinityRealEstate.com](http://www.AffinityRealEstate.com) | email: [info@affinityrealestate.com](mailto:info@affinityrealestate.com) | office: 218-237-3333 | fax: 218-237-3377

**Affinity**  
REAL ESTATE INC

**\$196,900**  
MLS 6744783 Residential  
26994 State Highway 18  
Brainerd MN 56401



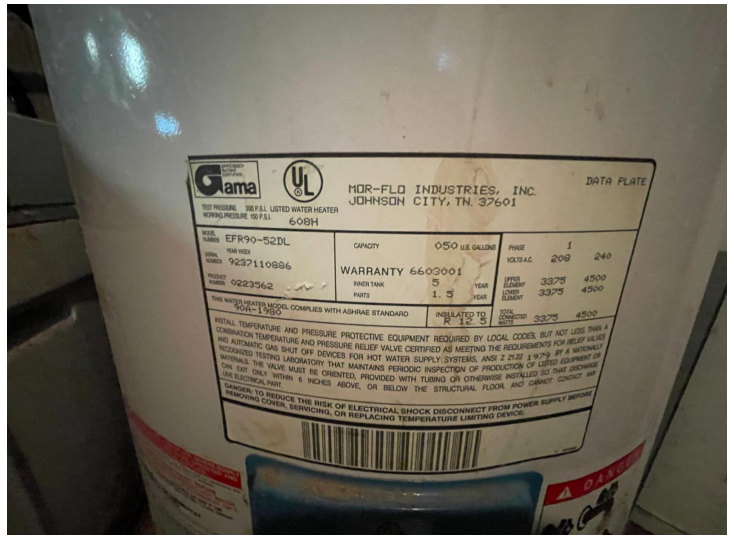
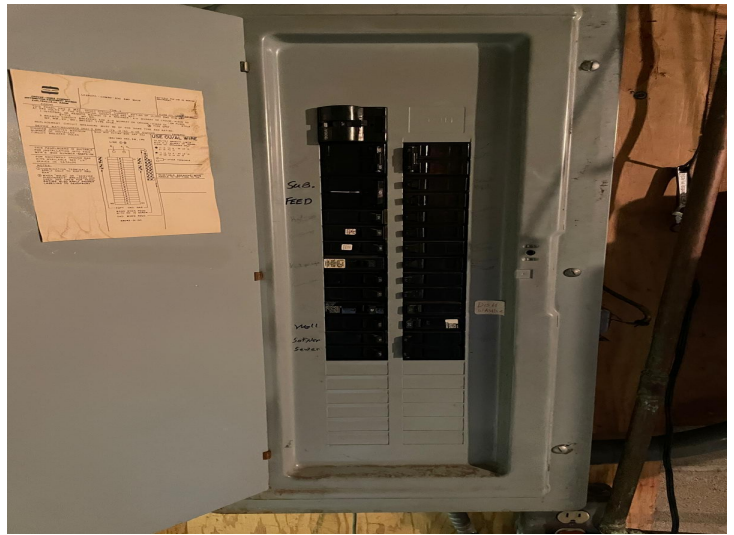
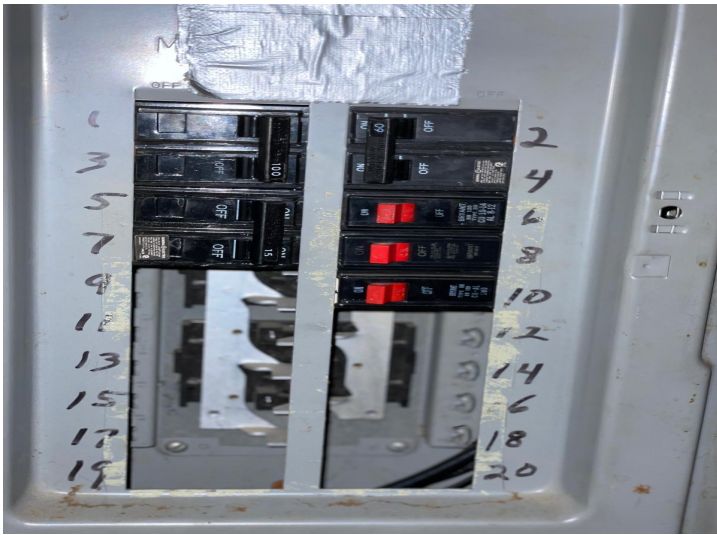


website: [www.AffinityRealEstate.com](http://www.AffinityRealEstate.com) | email: [info@affinityrealestate.com](mailto:info@affinityrealestate.com) | office: 218-237-3333 | fax: 218-237-3377

**Affinity**  
REAL ESTATE INC

**\$196,900**  
MLS 6744783 Residential  
26994 State Highway 18  
Brainerd MN 56401





website: [www.AffinityRealEstate.com](http://www.AffinityRealEstate.com) | email: [info@affinityrealestate.com](mailto:info@affinityrealestate.com) | office: 218-237-3333 | fax: 218-237-3377

**Affinity**  
REAL ESTATE INC

**\$196,900**  
MLS 6744783 Residential  
26994 State Highway 18  
Brainerd MN 56401





website: [www.AffinityRealEstate.com](http://www.AffinityRealEstate.com) | email: [info@affinityrealestate.com](mailto:info@affinityrealestate.com) | office: 218-237-3333 | fax: 218-237-3377

**Affinity**  
REAL ESTATE INC

**\$196,900**  
MLS 6744783 Residential  
26994 State Highway 18  
Brainerd MN 56401